

VOR/DME FHU 113.6 Chan 83	APP CRS 259°	Rwy Idg 12001 TDZE 4629 Apt Elev 4719
---	------------------------	--

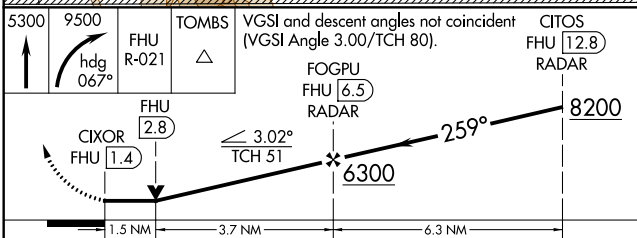
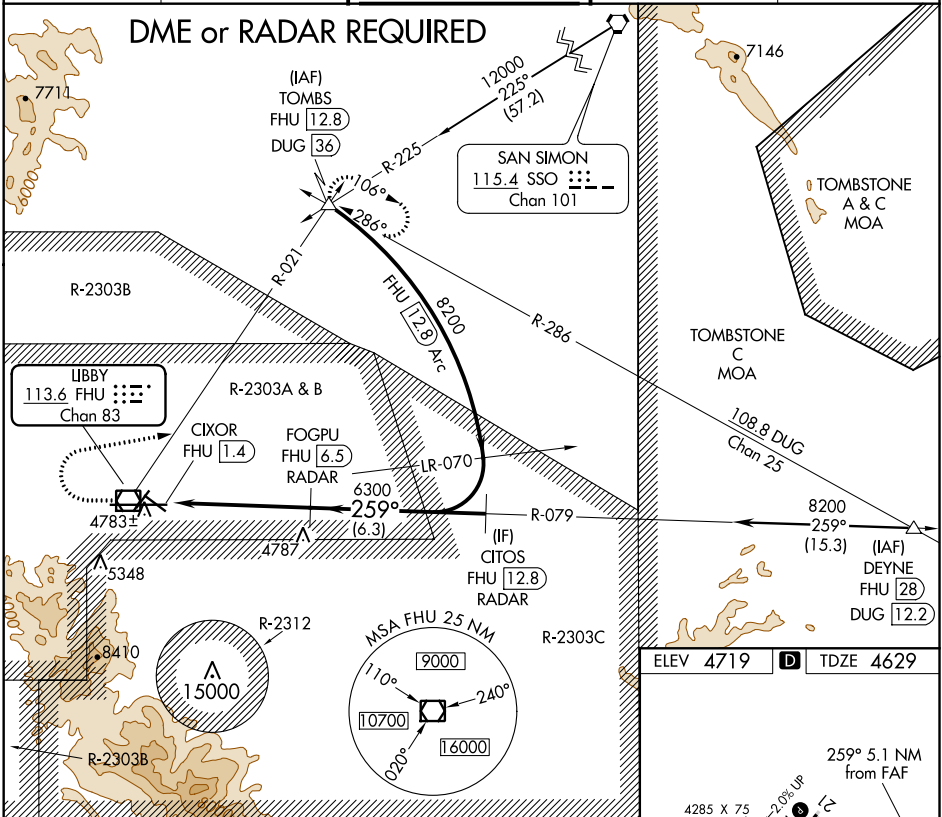
VOR RWY 26

SIERRA VISTA MUNI-LIBBY AAF (FHU)

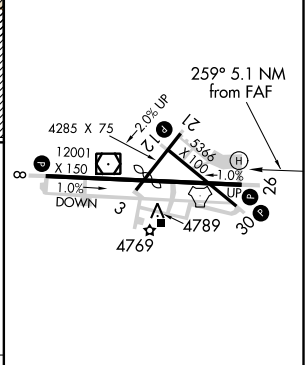
ASR/PAR Circling NA south of Rws 8 and 30. DME or RADAR required.

MISSED APPROACH: Climb to 5300 then climbing right turn to 9500 on heading 067° and FHU R-021 to TOMBS INT/ DUG 36 DME and hold, continue climb-in-hold to 9500.

ATIS 134.75 263.025	LIBBY AAF GCA* 127.05 254.35	LIBBY TOWER* 124.95 (CTAF) 284.75	GND CON 121.7 268.7	UNICOM 122.95
-------------------------------	--	---	-------------------------------	-------------------------



ELEV 4719	D	TDZE 4629
------------------	----------	------------------



CATEGORY	A	B	C	D
S-26	5140-1	511 (500-1)	5140-1½	511 (500-1%)
CIRCLING	5160-1 441 (500-1)	5180-1 461 (500-1)	5180-1⅝ 461 (500-1%)	5280-2 561 (600-2)

HIRL Rwy 8-26 1					
MIRL Rws 3-21 and 12-30 1					
FAF to MAP 5.1 NM					
Knots	60	90	120	150	180
Min:Sec	5:06	3:24	2:33	2:02	1:42

SW-4, 08 OCT 2020 to 05 NOV 2020

SW-4, 08 OCT 2020 to 05 NOV 2020