

WAAS CH <b>93702</b> <b>W06A</b>	APP CRS <b>057°</b>	Rwy Idg TDZE Apt Elev	<b>7201</b> <b>2351</b> <b>2351</b>
--	------------------------	-----------------------------	---

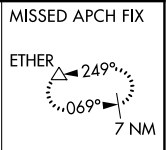
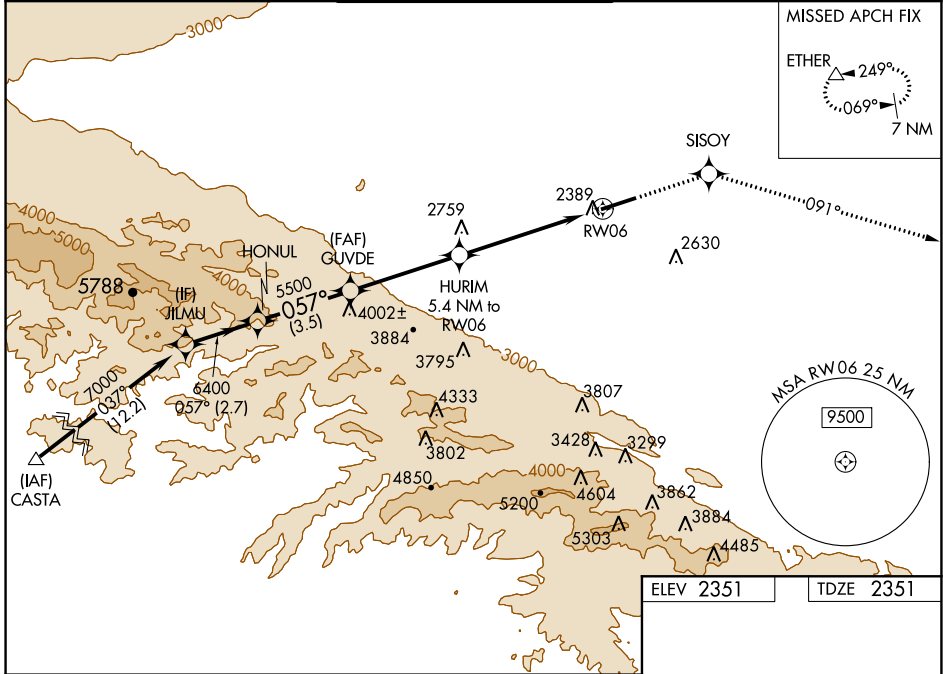
# RNAV (GPS) RWY 6

GENERAL WM J FOX AIRFIELD (WJF)

**▼** When VGSi inop, Straight-in/Circling Rwy 6 procedure NA at night.  
**▲** DME/DME RNP-0.3 NA. Visibility reduction by helicopters NA.  
**▼** For uncompensated Baro-VNAV systems, LNAV/VNAV NA below -19°C (-2°F) or above 45°C (113°F).  
 If local altimeter setting not received, use Palmdale altimeter setting and increase all DA/MDAs 60 feet.  
 Baro-VNAV NA when using Palmdale altimeter setting.

MISSED APPROACH: Climb to 6000 direct SISOY and via 091° track to ETHER and hold.

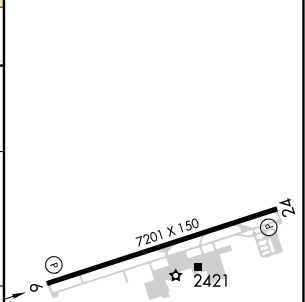
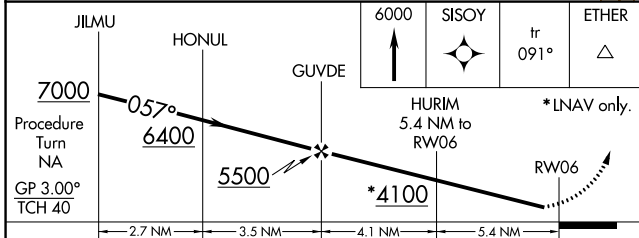
ATIS <b>126.3</b>	JOSHUA APP CON <b>126.1 290.3</b>	FOX TOWER* <b>118.525 (CTAF) 256.9</b>	GND CON <b>121.7 256.9</b>	UNICOM <b>122.95</b>
----------------------	--------------------------------------	---	-------------------------------	-------------------------



SW-3, 08 OCT 2020 to 05 NOV 2020

SW-3, 08 OCT 2020 to 05 NOV 2020

ELEV 2351	TDZE 2351
-----------	-----------



CATEGORY	A	B	C	D
LPV DA	2601-1		250 (300-1)	
LNAV/VNAV DA	2649-1		298 (300-1)	
LNAV MDA	2940-1 589 (600-1)		2940-1½ 589 (600-1½)	2940-1¾ 589 (600-1¾)
CIRCLING	2940-1 589 (600-1)		2940-1½ 589 (600-1½)	2940-2 589 (600-2)

REIL Rwy 6 and 24  
MIRL Rwy 6-24