

VOR/DME CIP 112.9 Chan 76	APP CRS 092°	Rwy ldg TDZE Apt Elev	5503 1816 1817
---	------------------------	-----------------------------	---

VOR/DME RWY 7

DUBOIS RGNL (DUJ)

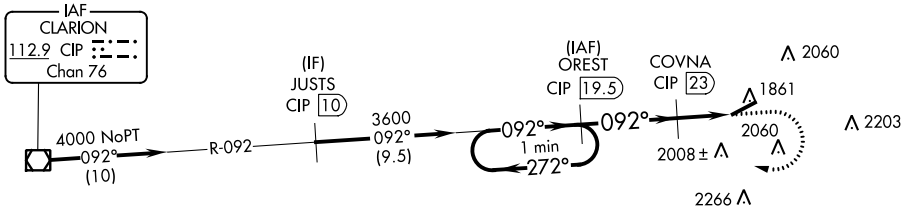
⚠ Visibility reduction by helicopters NA. When local altimeter setting not received, use Clearfield altimeter setting and increase all MDA 100 feet and Circling Cat C visibility ¼ mile.

MISSED APPROACH: Climb to 2800 then climbing right turn to 3600 via heading 320° and CIP R-092 to OREST/19.5 DME and hold.

ASOS 119.025	CLEVELAND CENTER 126.725 291.65	UNICOM 123.0 (CTAF) 📻
------------------------	---	--

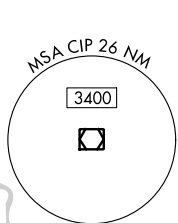
△ 2395

Procedure NA for arrivals at CIP VOR/DME on airway radials 050 CW 121.

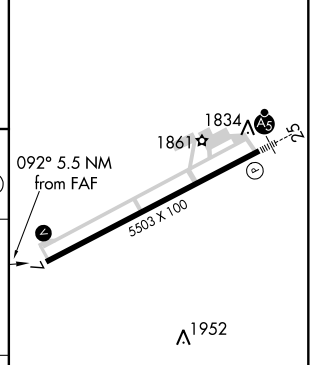
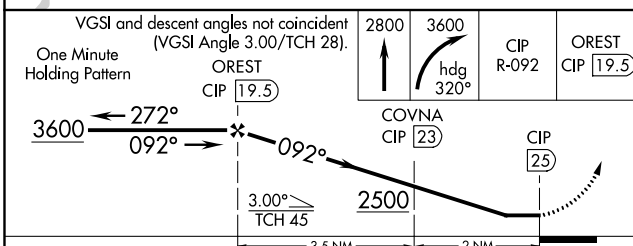


NE-4, 08 OCT 2020 to 05 NOV 2020

NE-4, 08 OCT 2020 to 05 NOV 2020



ELEV 1817	D	TDZE 1816
-----------	----------	-----------



CATEGORY	A	B	C	D
S-7	2260-1 444 (500-1)	2260-1¼ 444 (500-1¼)	2260-1½ 444 (500-1½)	2260-2 444 (500-2)
CIRCLING	2300-1 483 (500-1)	2300-1¼ 483 (500-1¼)	2320-1½ 503 (600-1½)	2380-2 563 (600-2)

REIL Rwy 7 **📻**
HIRL Rwy 7-25 **📻**