

LOC/DME I-FFT <b>109.95</b>	APP CRS <b>249°</b>	Rwy Idg TDZE <b>790</b> Apt Elev <b>812</b>
Chan <b>36 (Y)</b>		

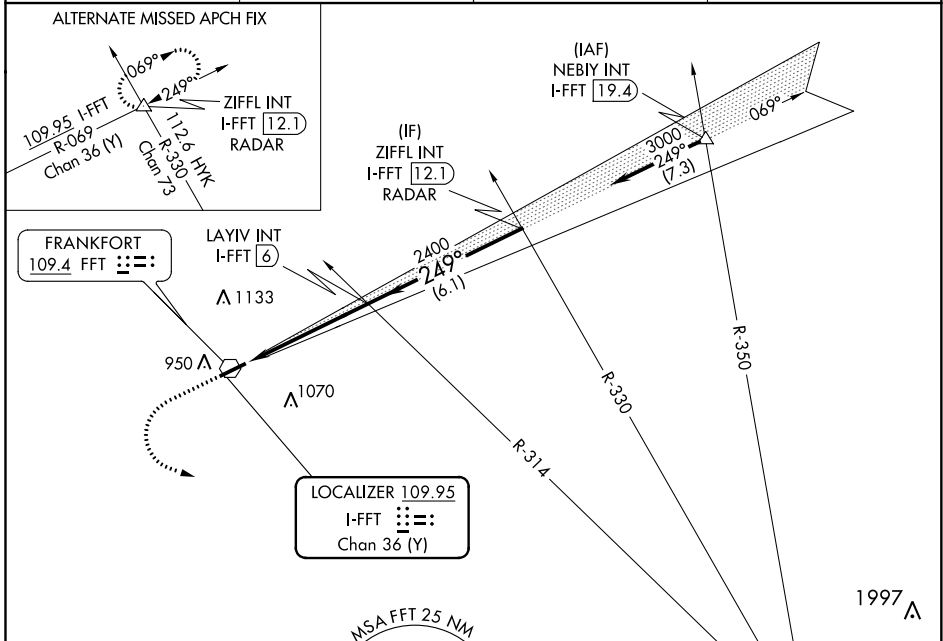
# LOC RWY 25

CAPITAL CITY (F'F'T')

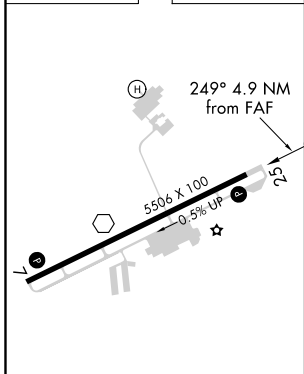
**▼** Rwy 25 helicopter visibility reduction below 3/4 SM NA. When local altimeter setting not received, use Lexington altimeter setting and increase all MDA 80 feet. Increase S-25 Cats C/D visibility to 1 1/2 mile and Circling Cat C and D visibility 1/4 mile.

**▲ NA** MISSED APPROACH: Climb to 3100 then left turn direct HYK VOR/DME and hold.

ASOS <b>119.275</b>	LEXINGTON APP CON <b>120.75 298.9</b>	CLNC DEL <b>118.65</b>	UNICOM <b>122.8 (CTAF) 0</b>
------------------------	--	---------------------------	---------------------------------



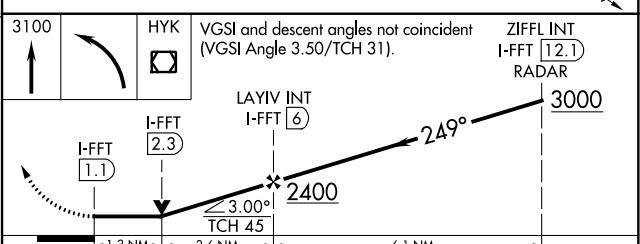
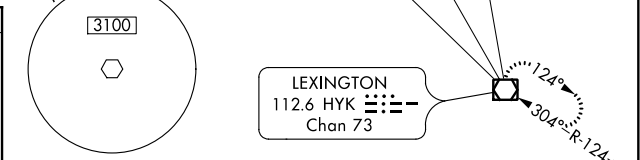
ELEV <b>812</b>	TDZE <b>790</b>
-----------------	-----------------



MIRL Rwy 7-25  
REIL Rwys 7 and 25  
FAF to MAP 4.9 NM

Knots	60	90	120	150	180
Min:Sec	4:54	3:16	2:27	1:58	1:38

**C** CIRCLING



CATEGORY	A	B	C	D
S-25	1280-1 490 (500-1)		1280-1 490 (500-1)	
<b>C</b> CIRCLING	1280-1 468 (500-1)	1380-1 568 (600-1)	1440-1 628 (700-1)	1440-2 628 (700-2)