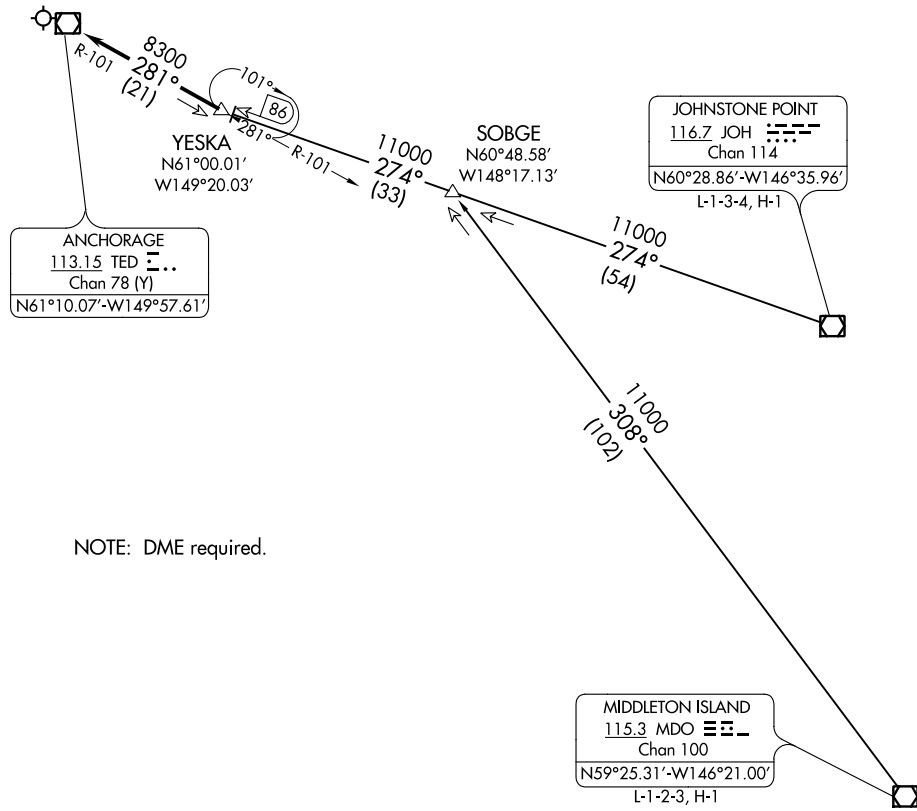


(YESKA.YESKA6) 20198
YESKA SIX ARRIVAL

TED STEVENS ANCHORAGE INTL (ANC)(PANC)
 AL-1500 (FAA) ANCHORAGE, ALASKA

ANCHORAGE APP CON
 126.4 259.6
 ANC/PANC D-ATIS
 135.5
 MRI/PAMR ATIS
 124.25
 PAED ATIS *
 124.3 273.5



NOTE: DME required.

NOTE: Chart not to scale.

ARRIVAL ROUTE DESCRIPTION

JOHNSTONE POINT TRANSITION (JOH.YESKA6): From over JOH VOR/DME on JOH R-274 to YESKA. Thence. . . .

MIDDLETON ISLAND TRANSITION (MDO.YESKA6): From over MDO VOR/DME on MDO R-308 to SOBGE, then on JOH R-274 to YESKA. Thence. . . .

. . . .From over YESKA on TED R-101 to TED VOR/DME.

Expect RADAR vectors to final approach course after YESKA.

YESKA SIX ARRIVAL
 (YESKA.YESKA6) 15OCT15

ANCHORAGE, ALASKA
 TED STEVENS ANCHORAGE INTL (ANC)(PANC)

AK, 10 SEP 2020 to 05 NOV 2020

AK, 10 SEP 2020 to 05 NOV 2020