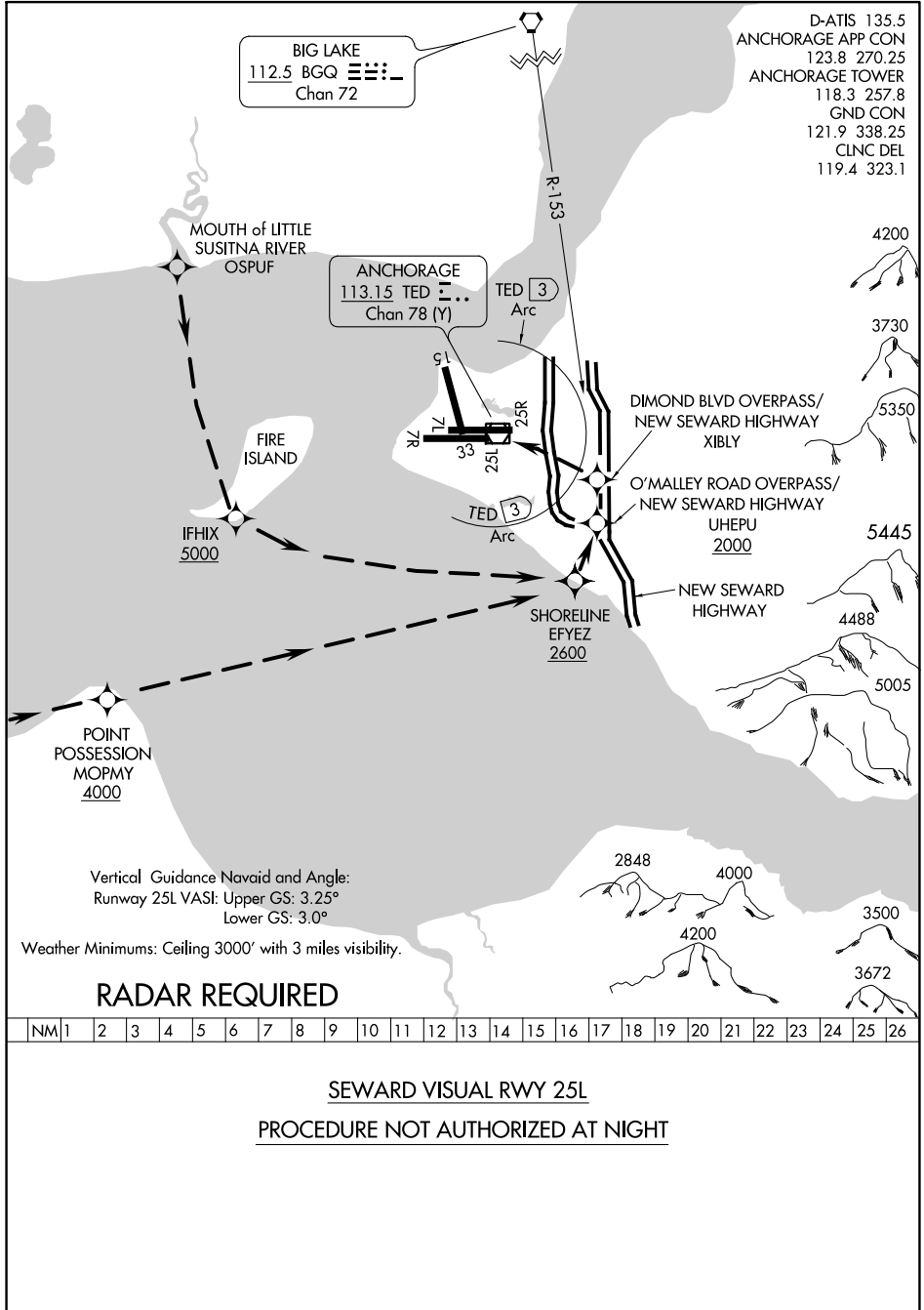


# SEWARD VISUAL RWY 25L

TED STEVENS ANCHORAGE INTL (ANC) (PANC)  
AL-1500 (FAA)  
ANCHORAGE, ALASKA



AK, 10 SEP 2020 to 05 NOV 2020

AK, 10 SEP 2020 to 05 NOV 2020

Vertical Guidance Navaid and Angle:  
Runway 25L VASI: Upper GS: 3.25°  
Lower GS: 3.0°

Weather Minimums: Ceiling 3000' with 3 miles visibility.

## RADAR REQUIRED

NM	1	2	3	4	5	6	7	8	9	10	11	12	13	14	15	16	17	18	19	20	21	22	23	24	25	26
----	---	---	---	---	---	---	---	---	---	----	----	----	----	----	----	----	----	----	----	----	----	----	----	----	----	----

SEWARD VISUAL RWY 25L  
PROCEDURE NOT AUTHORIZED AT NIGHT

# SEWARD VISUAL RWY 25L

61°10'N-150°00'W  
ANCHORAGE, ALASKA  
TED STEVENS ANCHORAGE INTL (ANC) (PANC)