

RNAV (RNP) Z RWY 7R

TED STEVENS ANCHORAGE INTL (ANC) (PANC)

APP CRS	Rwy Idg	12400
074°	TDZE	132
	Apt Elev	151

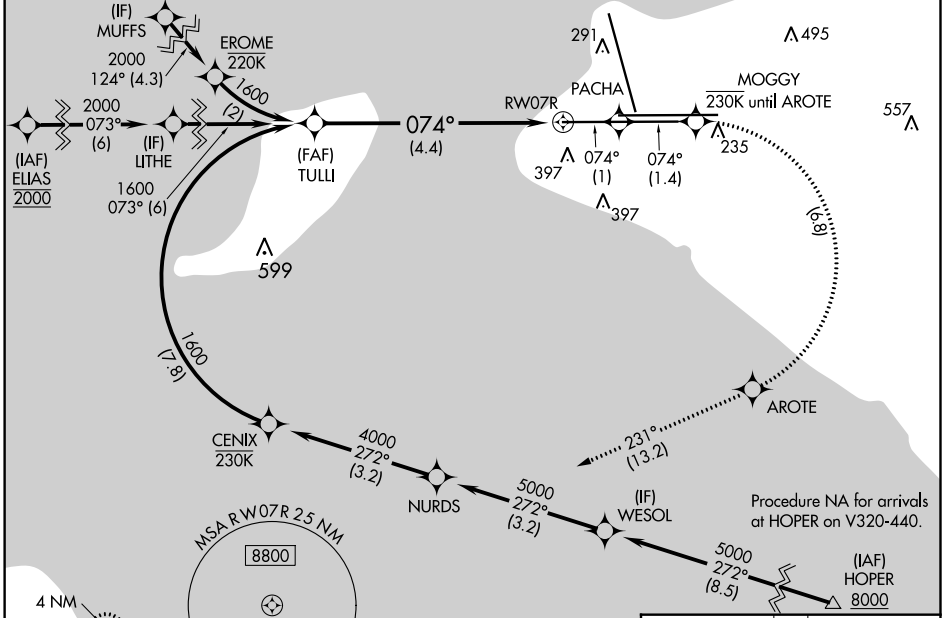
RNP AR APCH, RF required.

▼ Missed approach requires RNP less than 1.0.
 For uncompensated Baro-VNAV systems, procedure NA below -18°C (0°F) or above 54°C (130°F).
 For inop ALS, increase RNP 0.30 all Cats visibility to 1½ SM.

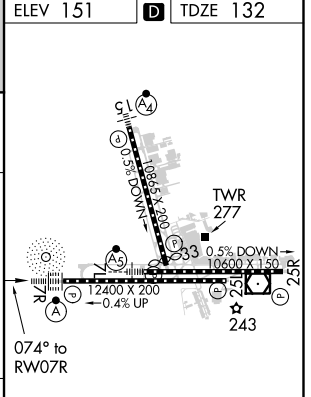
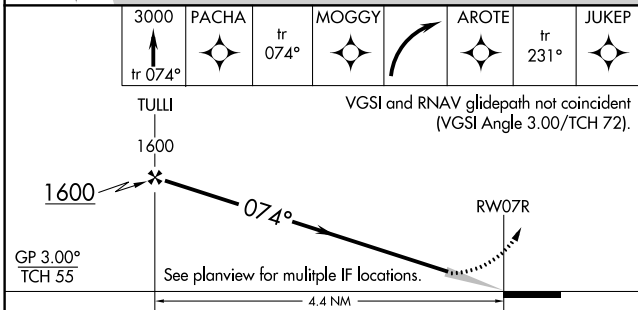
ALSF-2

MISSED APPROACH: Climb to 3000 on the missed approach route to JUKEP and hold.

D-ATIS	ANCHORAGE APP CON	ANCHORAGE TOWER	GND CON	CLNC DEL
135.5	118.6 290.5	118.3 257.8	121.9 338.25	119.4 323.1



ELEV 151	TDZE 132
----------	----------



CATEGORY	A	B	C	D
RNP 0.30 DA	562/50 430 (500-1)			
AUTHORIZATION REQUIRED				

REIL Rwy 33
 TDZ/CL Rws 7L and 7R
 HIRL all Rws

RNAV (RNP) Z RWY 7R

AK, 10 SEP 2020 to 05 NOV 2020

AK, 10 SEP 2020 to 05 NOV 2020