

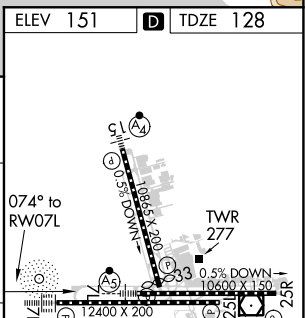
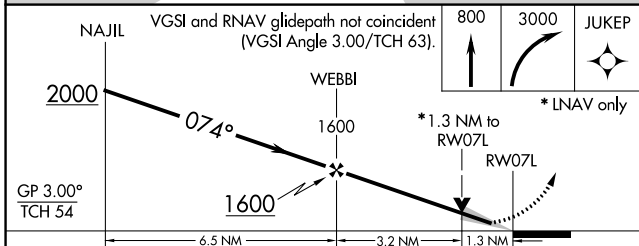
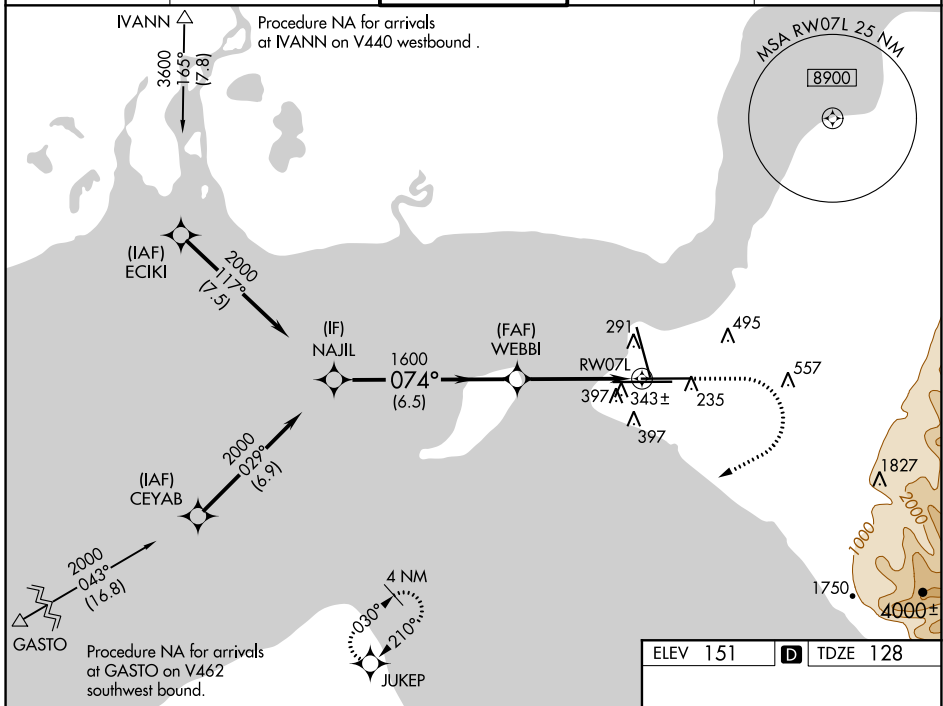
WAAS CH <b>86215</b> <b>W07B</b>	APP CRS <b>074°</b>	Rwy Idg <b>10600</b> TDZE <b>128</b> Apt Elev <b>151</b>
--	------------------------	--

# RNAV (GPS) RWY 7L

TED STEVENS ANCHORAGE INTL (ANC) (PANC)

RNP APCH.	MALSR	MISSED APPROACH: Climb to 800 then climbing right turn to 3000 direct JUKEP and hold.
▼ For uncompensated Baro-VNAV systems, LNAV/VNAV NA below -18°C or above 54°C. For inop ALS, increase LNAV/VNAV all Cats and LNAV Cat C/D visibility to 1½ SM.	Ⓜ	

D-ATIS <b>135.5</b>	ANCHORAGE APP CON <b>118.6 290.5</b>	ANCHORAGE TOWER <b>118.3 257.8</b>	GND CON <b>121.9 338.25</b>	CLNC DEL <b>119.4 323.1</b>
------------------------	---	---------------------------------------	--------------------------------	--------------------------------



CATEGORY	A	B	C	D
LPV DA	328/18		200 (200-½)	
LNAV/VNAV DA	595/50		467 (500-1)	
LNAV MDA	600/24	472 (500-½)	600/50	472 (500-1)
CIRCLING	700-1	549 (600-1)	800-1¾ 649 (700-1¾)	920-2½ 769 (800-2½)

REIL Rwy 33  
TDZ/CL Rws 7L and 7R  
HIRL all Rws

AK, 10 SEP 2020 to 05 NOV 2020

AK, 10 SEP 2020 to 05 NOV 2020