

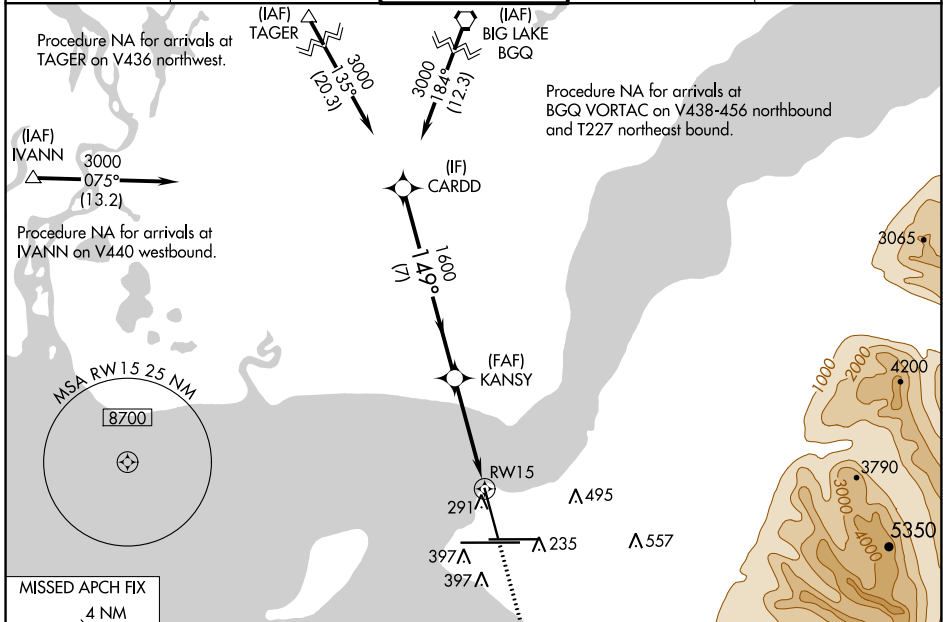
WAAS CH 90115 W15A	APP CRS 149°	Rwy Idg 10000 TDZE 151 Apt Elev 151
--	------------------------	--

RNAV (GPS) RWY 15

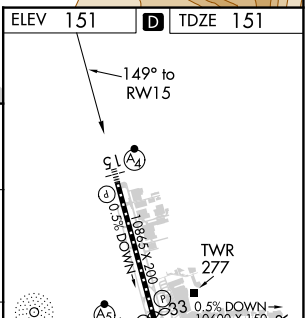
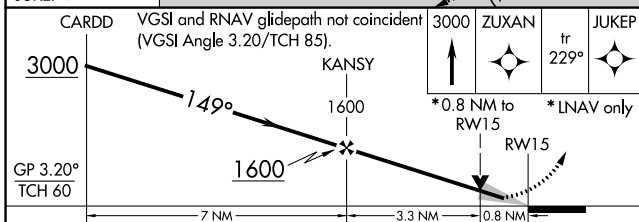
TED STEVENS ANCHORAGE INTL (ANC) (PANC)

RNP APCH. ⚠ Inop table does not apply to LPV, LNAV/VNAV. For uncompensated Baro-VNAV systems, LNAV/VNAV NA below -21°C or above 54°C. For inop ALS, increase LNAV Cat C/D visibility to 1½ SM.	MASF Ⓜ	MISSED APPROACH: Climb to 3000 direct ZUXAN and on track 229° to JUKEP and hold.
---	-----------	--

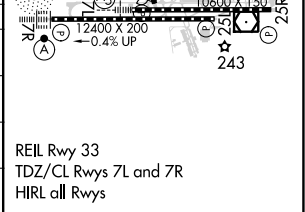
D-ATIS 135.5	ANCHORAGE APP CON 118.6 290.5	ANCHORAGE TOWER 118.3 257.8	GND CON 121.9 338.25	CLNC DEL 119.4 323.1
------------------------	---	---------------------------------------	--------------------------------	--------------------------------



MISSED APCH FIX 4 NM 030° 210° JUKEP	ELEV 151	TDZE 151
--	----------	----------



CATEGORY	A	B	C	D
LPV DA	351/40	200 (200-¾)	401/40	250 (300-¾)
LNAV/VNAV DA	404/40 253 (300-¾)			
LNAV MDA	600/40	449 (500-¾)	600/60	449 (500-1¼)
CIRCLING	700-1	549 (600-1)	800-1¾ 649 (700-1¾)	920-2½ 769 (800-2½)



AK, 10 SEP 2020 to 05 NOV 2020

AK, 10 SEP 2020 to 05 NOV 2020