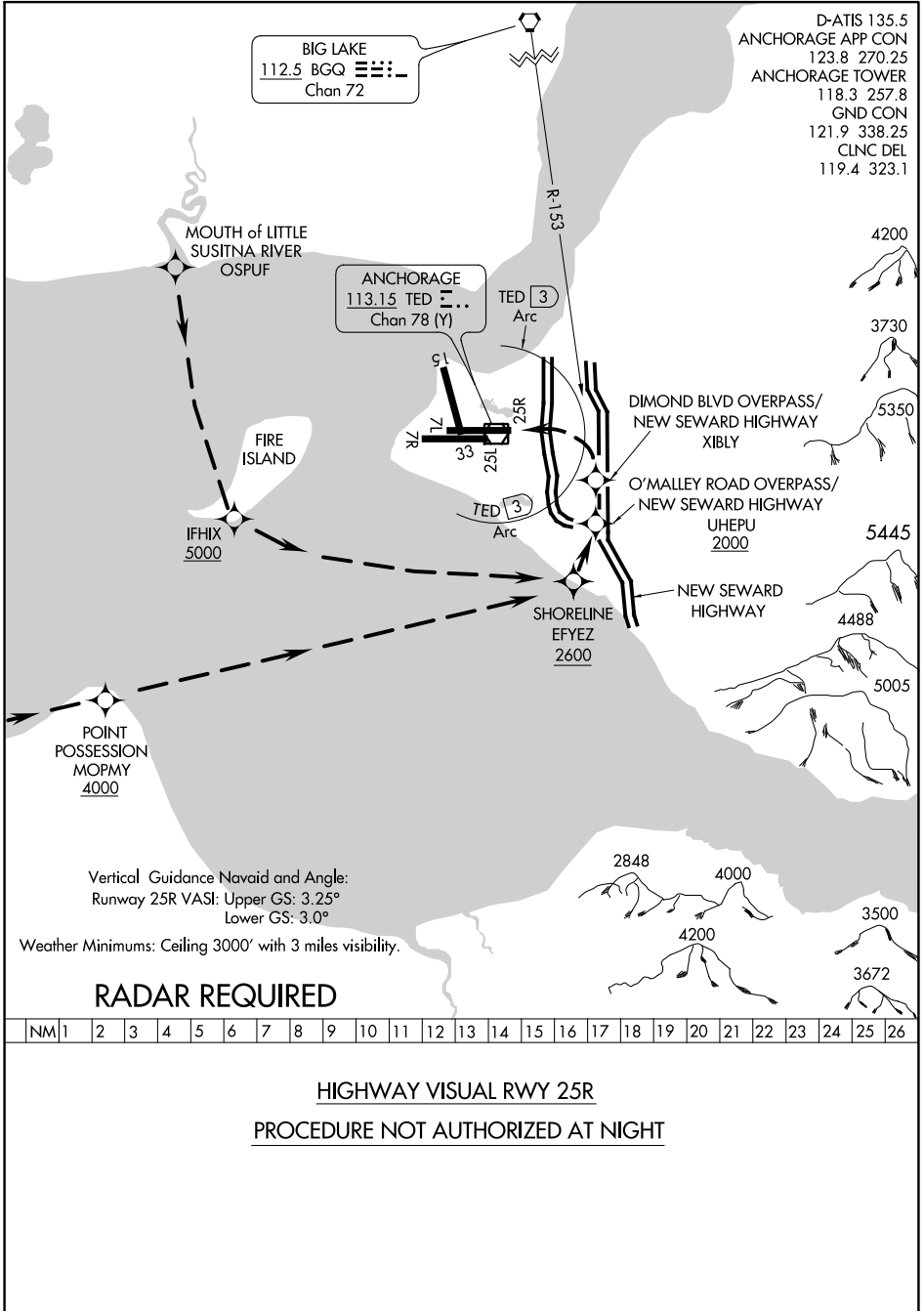


HIGHWAY VISUAL RWY 25R

AL-1500 (FAA)

ANCHORAGE, ALASKA



D-ATIS 135.5
 ANCHORAGE APP CON 123.8 270.25
 ANCHORAGE TOWER 118.3 257.8
 GND CON 121.9 338.25
 CLNC DEL 119.4 323.1

BIG LAKE
 112.5 BGQ Chan 72

ANCHORAGE
 113.15 TED Chan 78 (Y)

Vertical Guidance Navaid and Angle:
 Runway 25R VASI: Upper GS: 3.25°
 Lower GS: 3.0°

Weather Minimums: Ceiling 3000' with 3 miles visibility.

RADAR REQUIRED

NM	1	2	3	4	5	6	7	8	9	10	11	12	13	14	15	16	17	18	19	20	21	22	23	24	25	26
----	---	---	---	---	---	---	---	---	---	----	----	----	----	----	----	----	----	----	----	----	----	----	----	----	----	----

HIGHWAY VISUAL RWY 25R
PROCEDURE NOT AUTHORIZED AT NIGHT

HIGHWAY VISUAL RWY 25R

61°10'N-150°00'W

ANCHORAGE, ALASKA

AK, 10 SEP 2020 to 05 NOV 2020

AK, 10 SEP 2020 to 05 NOV 2020