

FFITZ FOUR DEPARTURE (RNAV)

AK, 10 SEP 2020 to 05 NOV 2020

TOP ALTITUDE:
10000

D-ATIS
135.5
CLNC DEL
119.4 323.1
GND CON
121.9 338.25
ANCHORAGE TOWER
118.3 257.8
ANCHORAGE DEP CON
118.6 290.5

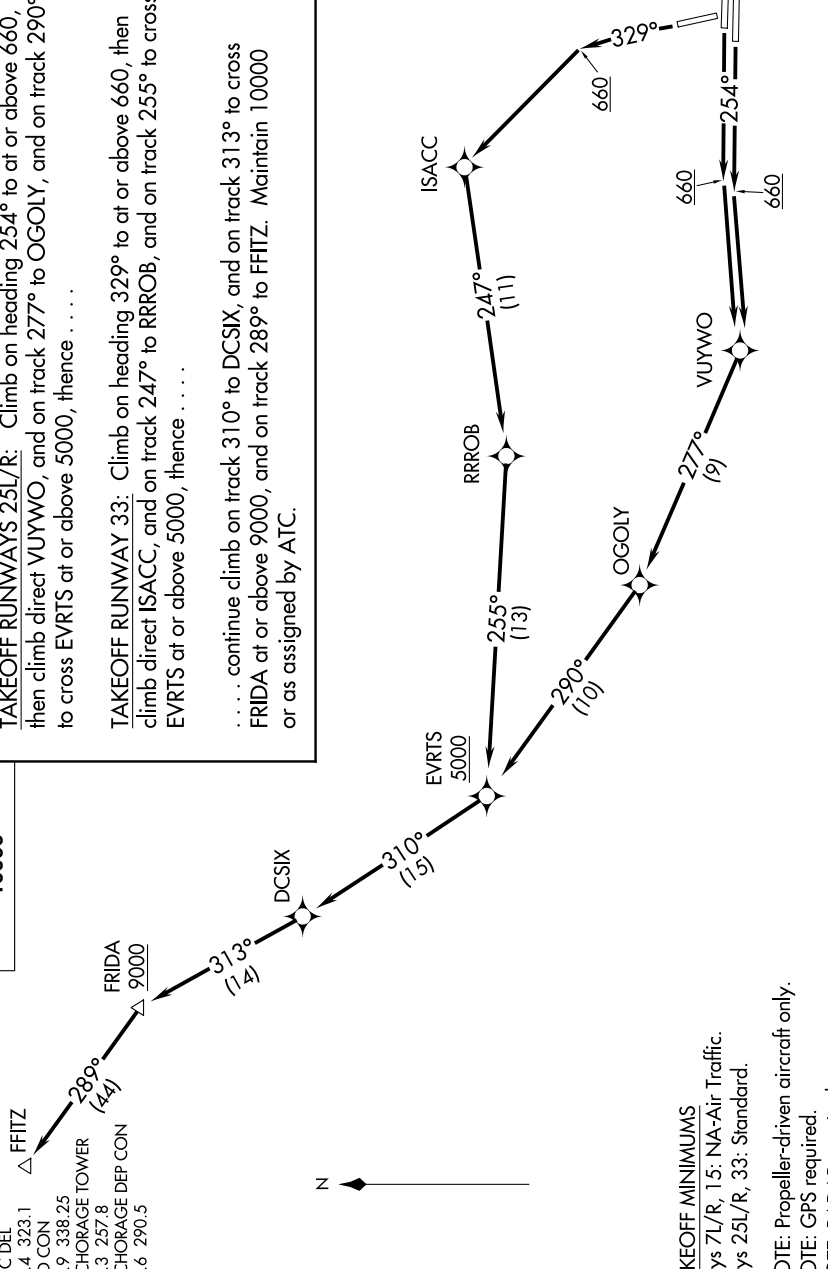
DEPARTURE ROUTE DESCRIPTION

TAKEOFF RUNWAYS 25L/R: Climb on heading 254° to at or above 660, then climb direct VUYWO, and on track 277° to OGOLY, and on track 290° to cross EVRTS at or above 5000, thence

TAKEOFF RUNWAY 33: Climb on heading 329° to at or above 660, then climb direct ISACC, and on track 247° to RRROB, and on track 255° to cross EVRTS at or above 5000, thence

. . . . continue climb on track 310° to DCSIX, and on track 313° to cross FRIDA at or above 9000, and on track 289° to FFITZ. Maintain 10000 or as assigned by ATC.

FFITZ
ANCHORAGE DEP CON
FRIDA
9000
DCSIX
EVRTS
5000
OGOLY
RRROB
ISACC
VUYWO



TAKEOFF MINIMUMS
Rwys 7L/R, 15: NA-Air Traffic.
Rwys 25L/R, 33: Standard.
NOTE: Propeller-driven aircraft only.
NOTE: GPS required.
NOTE: RADAR required.
NOTE: RNAV-1.

NOTE: Chart not to scale.

AK, 10 SEP 2020 to 05 NOV 2020