

WAAS CH <b>40005</b> <b>W32A</b>	APP CRS <b>320°</b>	Rwy Idg TDZE Apt Elev	<b>3576</b> <b>671</b> <b>672</b>
--	------------------------	-----------------------------	---

# RNAV (GPS) RWY 32

KEOKUK MUNI (EOK)

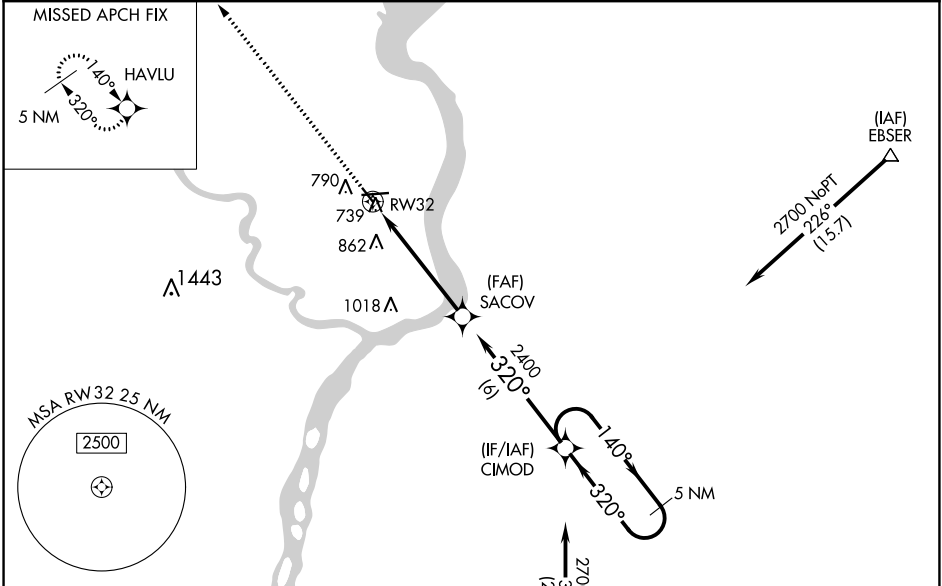
**⚠** DME/DME RNP -0.3 NA. Helicopter visibility reduction below 1 SM not authorized.  
**⚠** For uncompensated Baro-VNAV systems, LNAV/VNAV NA below -16°C (4°F) or above 54°C (130°F). When local altimeter setting not received, use Burlington altimeter setting and increase all DA 59 feet and all MDA 60 feet, increase LNAV/VNAV Cat A/B/C and LNAV and Circling Cat C visibility 1/4 mile. Baro-VNAV NA when using Burlington altimeter setting. Rwy 32 Straight-in and Circling minimums NA at night.

MISSED APPROACH: Climb to 2400 direct HAVLU and hold.

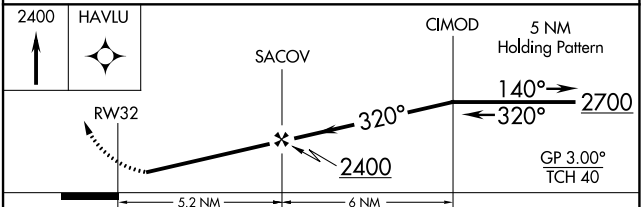
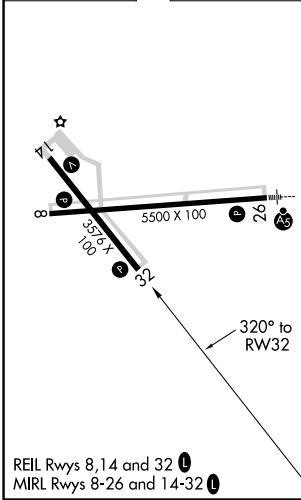
AWOS-3  
**118.375**

KANSAS CITY CENTER  
**126.225 317.775**

UNICOM  
**122.8 (CTAF) 1**



ELEV 672 TDZE 671



CATEGORY	A	B	C	D
LPV DA	921-1		250 (300-1)	NA
LNAV/VNAV DA	1163-1 3/4		492 (500-1 1/4)	NA
LNAV MDA	1120-1	449 (500-1)	1120-1 1/4 449 (500-1 1/4)	NA
CIRCLING	1180-1	508 (600-1)	1220-1 1/2 548 (600-1 1/2)	NA

KEOKUK, IOWA  
Orig-B 13DEC12

40°28'N-91°26'W

# RNAV (GPS) RWY 32

NC-3, 08 OCT 2020 to 05 NOV 2020

NC-3, 08 OCT 2020 to 05 NOV 2020