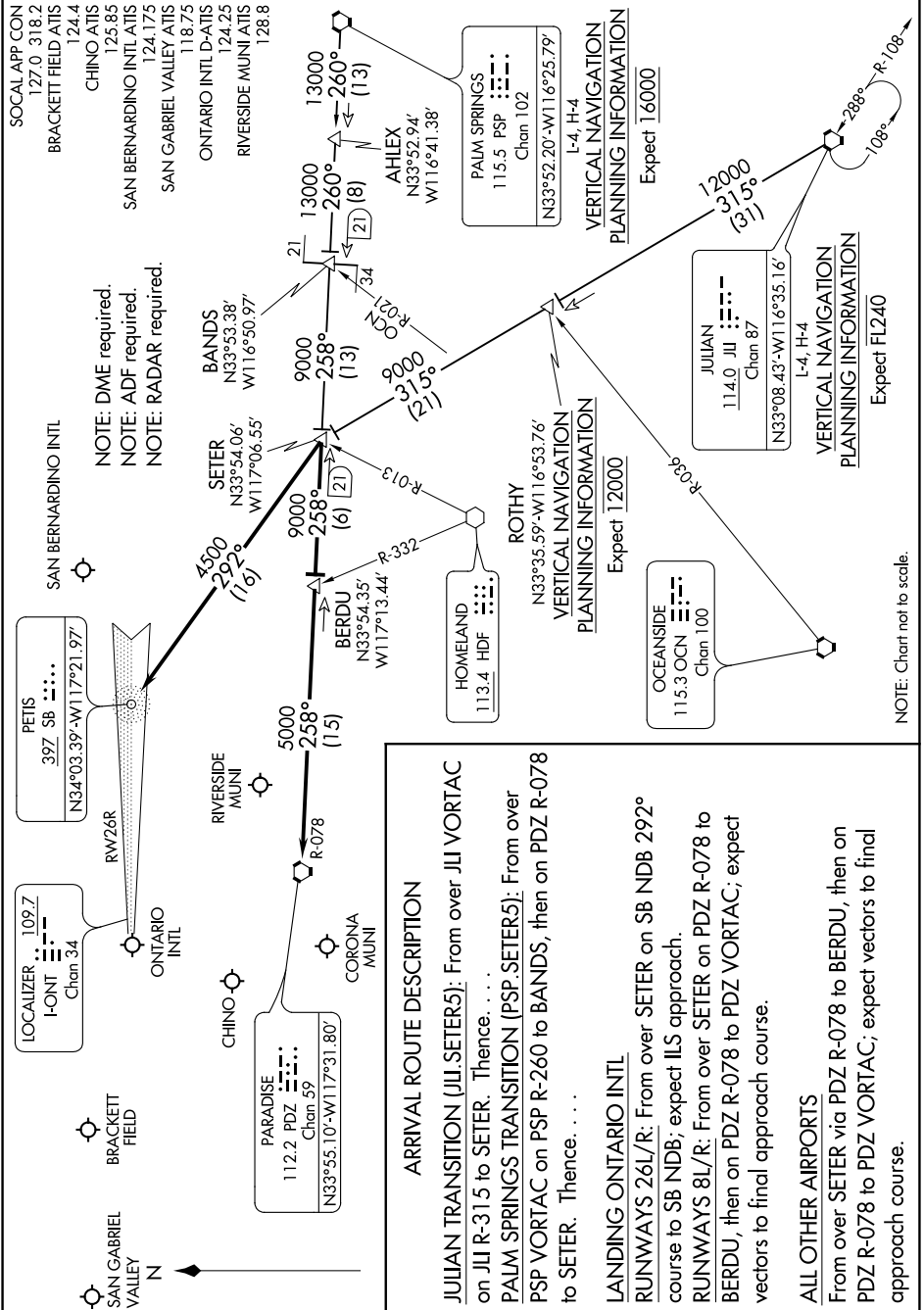


SETER FIVE ARRIVAL

AL-965 (FAA)

ONTARIO, CALIFORNIA

0200 \ 0N 05 OCT 2020 to 05 NOV 2020



SETER FIVE ARRIVAL

(SETER.SETER5) 17AUG17

ONTARIO, CALIFORNIA

SW-3, 08 OCT 2020 to 05 NOV 2020

NOTE: DME required.
NOTE: ADF required.
NOTE: RADAR required.

NOTE: Chart not to scale.

VERTICAL NAVIGATION PLANNING INFORMATION
Expect 16000
L-4, H-4

12000
315°
1311

VERTICAL NAVIGATION PLANNING INFORMATION
Expect FL240
L-4, H-4

- SOCAL APP CON 127.0 318.2
- BRACKETT FIELD ATIS 124.4
- CHINO ATIS 125.85
- SAN BERNARDINO INTL ATIS 124.175
- SAN GABRIEL VALLEY ATIS 118.75
- ONTARIO INTL D-ATIS 124.25
- RIVERSIDE MUNI ATIS 128.8

- BANDS N33°53.38' W116°50.97'
- SETER N33°54.06' W117°06.55'
- BERDU N33°54.35' W117°13.44'
- ROTHERY N33°35.59' W116°53.76'
- OCN N33°52.20' W116°25.77'
- AHLEX N33°52.94' W116°41.38'
- JULIAN N33°08.43' W116°35.16'

- PETIS 397 SB N24°03.39' W117°21.97'
- LOCALIZER 109.7 I-ONT Chan 34
- PARADISE 112.2 PDZ Chan 59 N33°55.10' W117°31.80'
- HOMELAND 113.4 HDF Chan 100
- OCEANSIDE 115.3 OCN Chan 100