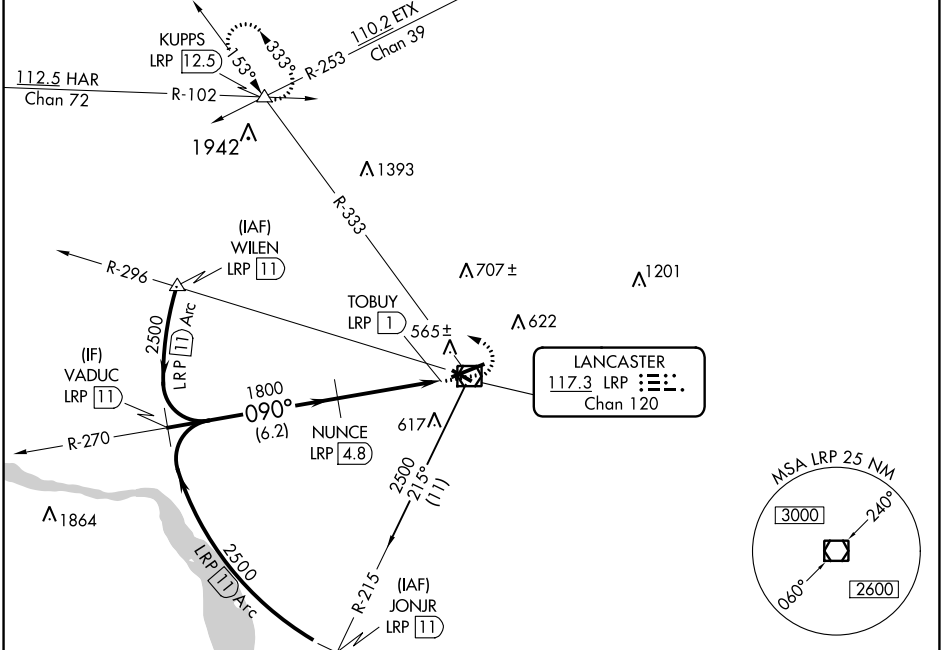


VOR/DME LRP <b>117.3</b> Chan <b>120</b>	APP CRS <b>090°</b>	Rwy Idg <b>6118</b> TDZE <b>399</b> Apt Elev <b>403</b>
--	------------------------	---

# VOR/DME RWY 8

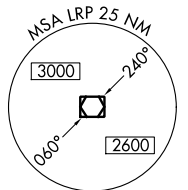
LANCASTER (LNS)

<p><b>⚠</b> Night landing: Rwy 13, 31 NA. Inop table does not apply.  <b>⚠</b> When local altimeter setting not received, use Harrisburg Intl altimeter setting and increase all MDA 80 feet, and S-8 and Circling Cats C and D visibility ¼ mile.</p>	<p>MALSR  </p>	<p>MISSED APPROACH: Climb to 1200 then climbing left turn to 3000 via LRP VOR/DME R-333 to KUPPS INT/LRP 12.5 DME and hold.</p>		
<p>ATIS <b>125.675</b></p>	<p>HARRISBURG APP CON <b>126.45 281.525</b></p>	<p>LANCASTER TOWER★ <b>120.9</b> (CTAF) <b>251.1</b></p>	<p>GND CON <b>121.8</b></p>	<p>UNICOM <b>122.95</b></p>

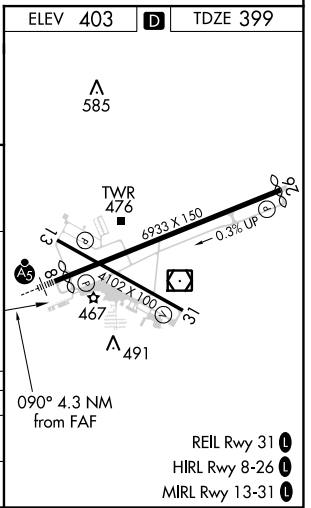


NE-4, 08 OCT 2020 to 05 NOV 2020

NE-4, 08 OCT 2020 to 05 NOV 2020



	ELEV 403	<b>D</b>	TDZE 399
	VADUC LRP 11	1200	3000
	NUNCE LRP 4.8	LRP R-333	KUPPS
	2500	1800	LRP TOBUY VOR/DME
	6.2 NM	3.1 NM	0.7-0.5
CATEGORY	A	B	C
S-8	820-1	421 (500-1)	820-1¼ 421 (500-1¼)
CIRCLING	940-1	537 (600-1)	940-1½ 537 (600-1½) 1060-2 657 (700-2)



REIL Rwy 31  
 HIRL Rwy 8-26  
 MIRL Rwy 13-31