

VOR/DME LRP 117.3 Chan 120	APP CRS 319°	Rwy Idg 4102 TDZE 403 Apt Elev 403
--	------------------------	---

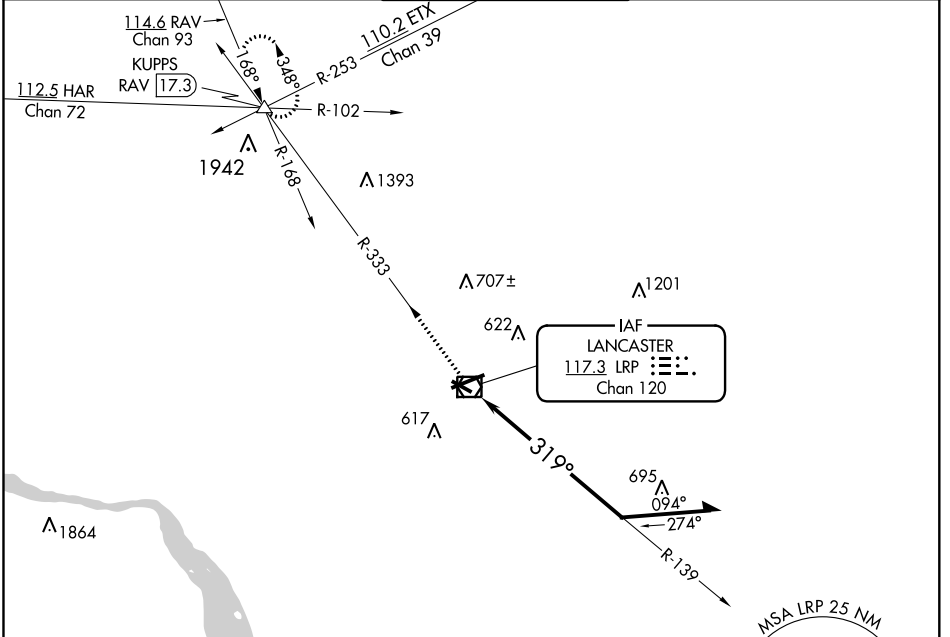
VOR RWY 31

LANCASTER (LNS)

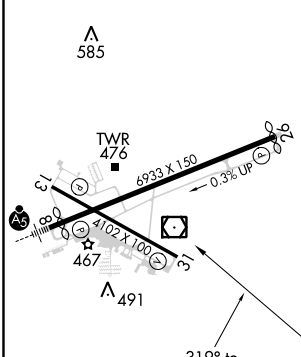
⚠ Night landing: Rwy 13, 31 NA.
⚠ Helicopter visibility reduction below 1 SM NA.

MISSED APPROACH: Climb to 3000 via LRP VOR/DME R-333 to KUPPS INT/RAV 17.3 DME and hold.

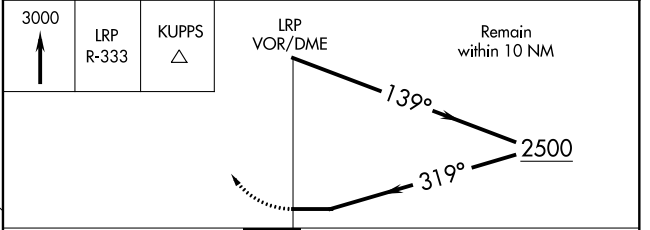
ATIS 125.675	HARRISBURG APP CON 126.45 281.525	LANCASTER TOWER★ 120.9 (CTAF) 251.1	GND CON 121.8	UNICOM 122.95
------------------------	---	--	-------------------------	-------------------------



ELEV 403	D	TDZE 403
-----------------	----------	-----------------



REIL Rwy 31 Ⓛ
HIRL Rwy 8-26 Ⓛ
MIRL Rwy 13-31 Ⓛ



CATEGORY	A	B	C	D
S-31	1060-1	657 (700-1)	1060-1¾ 657 (700-1¾)	1060-2 657 (700-2)
CIRCLING	1060-1	657 (700-1)	1060-1¾ 657 (700-1¾)	1080-2¼ 677 (700-2¼)

NE-4, 08 OCT 2020 to 05 NOV 2020

NE-4, 08 OCT 2020 to 05 NOV 2020