

VOR/DME FCA 113.2 Chan 79	APP CRS 316°	Rwy Idg TDZE Apt Elev	3510 2974 2977
---	------------------------	-----------------------------	---

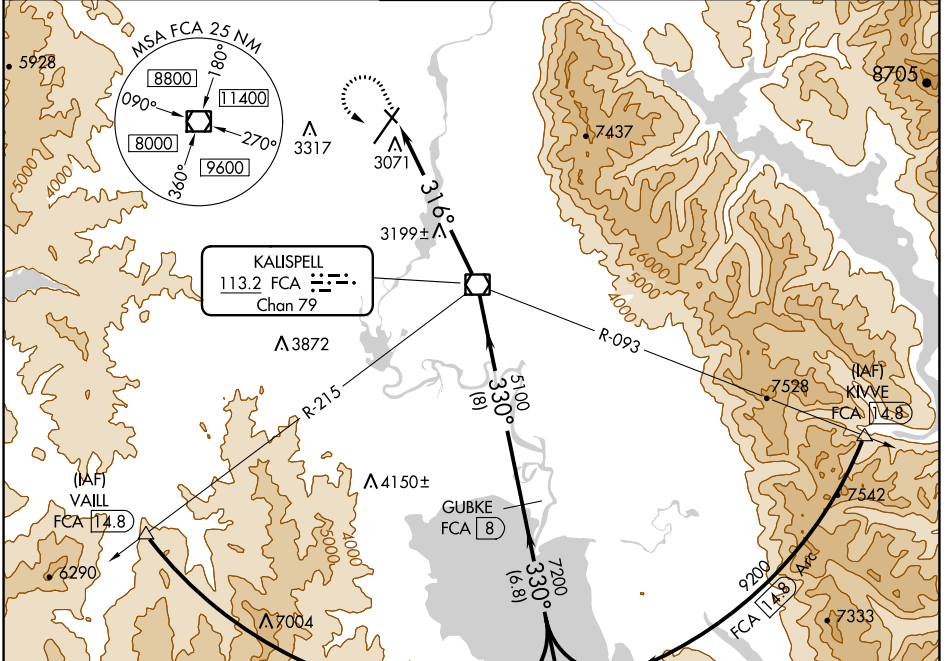
VOR/DME RWY 30

GLACIER PARK INTL (GPI)

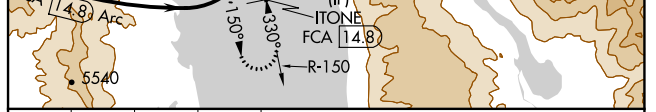
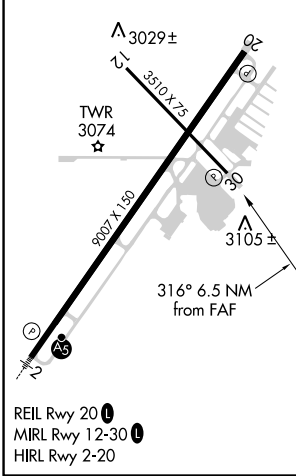
⚠ Helicopter visibility reduction below 1 SM not authorized. When VGSI inoperative, straight-in minimums not authorized at night.
⚠ -15°C

MISSED APPROACH: Climb to 4000 then climbing left turn to 9300 via heading 130° and FCA VOR/DME R-150 to ITONE/14.8 DME and hold, continue climb-in-hold to 9300.

ATIS 132.625	SALT LAKE CENTER 133.4 285.4	GLACIER TOWER* 124.55 (CTAF) 0	GND CON 121.6	UNICOM 122.95
------------------------	--	--	-------------------------	-------------------------



ELEV 2977 **D** TDZE 2974



	4000	9300	FCA R-150	ITONE FCA 14.8	Descent angles NA.	GUBKE FCA 8	ITONE FCA 14.8
	↑	hdg 130°					
			FCA VOR/DME				
			FCA 6.5	5100	7200	330°	9200
			6.5 NM	8 NM	6.8 NM		
CATEGORY	A	B	C	D			
S-30	3480-1	506 (600-1)	3480-1½	506 (600-1½)			
C CIRCLING	3520-1	3580-1	3640-1¾	3760-2½			
	543 (600-1)	603 (700-1)	663 (700-1¾)	783 (800-2½)			

NW-1, 08 OCT 2020 to 05 NOV 2020

NW-1, 08 OCT 2020 to 05 NOV 2020