

WAAS CH <b>70799</b> <b>W02A</b>	APP CRS <b>020°</b>	Rwy Idg TDZE Aprt Elev	<b>9007</b> <b>2966</b> <b>2977</b>
--	------------------------	------------------------------	---

# RNAV (GPS) Z RWY 2

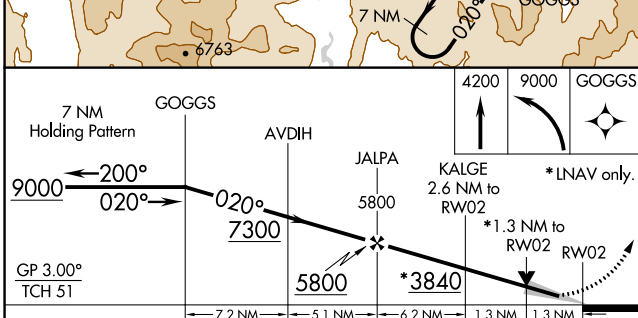
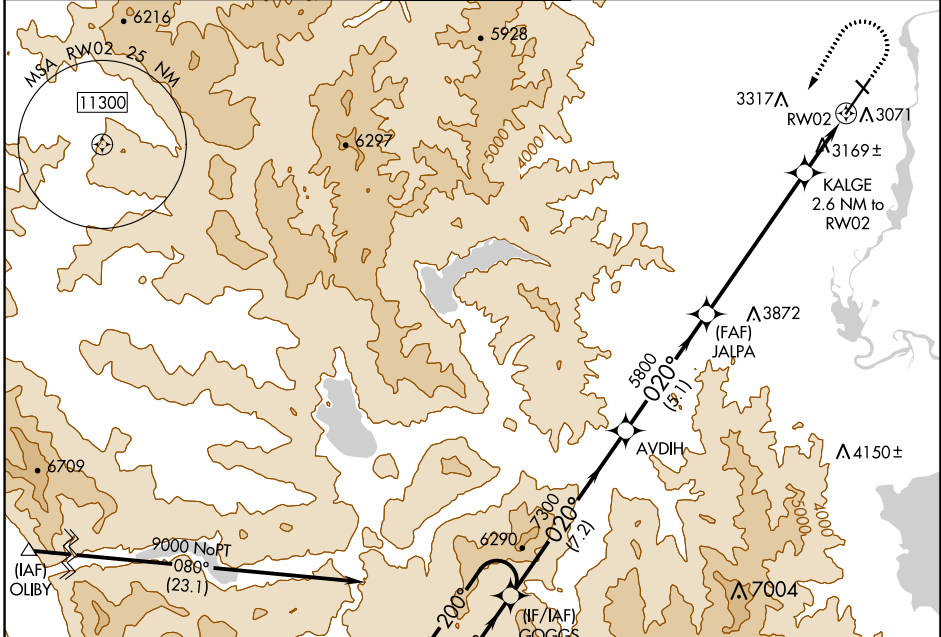
GLACIER PARK INTL (GPI)

**V** For uncompensated Baro-VNAV systems, LNAV/VNAV NA below -24°C (-11°F) or above 53°C (128°F).  
**88** -15°C  
 DME/DME RNP-0.3 NA.

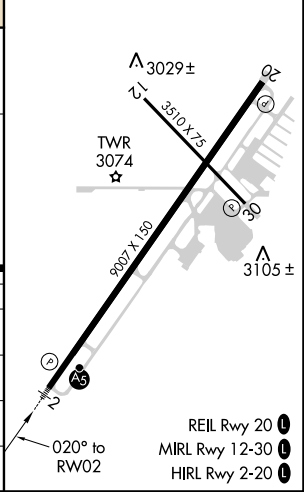
**MALSR**

**MISSED APPROACH:** (Do not exceed 185K until GOGGS) Climb to 4200, then climbing left turn to 9000 direct GOGGS and hold, continue climb-in-hold to 9000.

ATIS <b>132.625</b>	SALT LAKE CENTER <b>133.4 285.4</b>	GLACIER TOWER * <b>124.55 (CTAF) 0</b>	GND CON <b>121.6</b>	UNICOM <b>122.95</b>
------------------------	--	---	-------------------------	-------------------------



ELEV 2977	<b>D</b>	TDZE 2966
-----------	----------	-----------



CATEGORY	A	B	C	D
LPV DA		3290-5/8	324 (400-3/8)	
LNAV/VNAV DA		3468-1 1/4	502 (500-1 1/4)	
LNAV MDA	3420-1 1/2	454 (500-1/2)	3420-7/8	454 (500-7/8)
<b>C</b> CIRCLING	3480-1 503 (600-1)	3580-1 603 (700-1)	3640-1 3/4 663 (700-1 3/4)	3760-2 1/2 783 (800-2 1/2)

- REIL Rwy 20 **0**
- MIRL Rwy 12-30 **1**
- HIRL Rwy 2-20 **0**

NW-1, 08 OCT 2020 to 05 NOV 2020

NW-1, 08 OCT 2020 to 05 NOV 2020