

0200 \ 08 OCT 2020 to 05 NOV 2020 11-MN

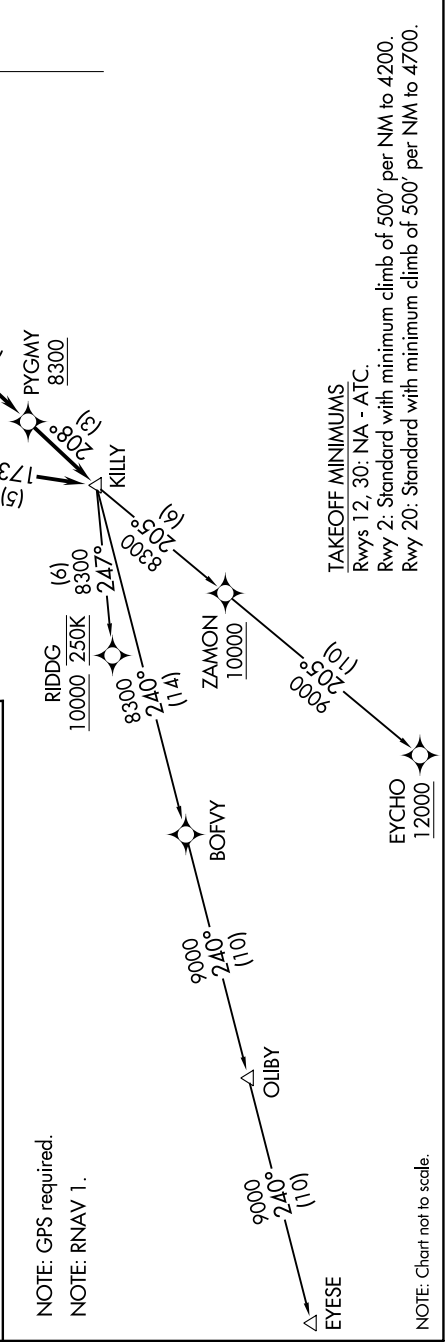
**DEPARTURE ROUTE DESCRIPTION**

**TAKEOFF RUNWAY 2:** Climb heading 020° to intercept course 290° to cross KECEK at or above 7000 and at or below 230K, then on track 216° to cross EEVEL at or above 9000, then on track 167° to KNEVL, then on track 173° to KILLY, thence . . . .

**TAKEOFF RUNWAY 20:** Climb heading 200° to 3480, then climbing right turn direct to cross DAAACE at or above 6300, then on track 208° to cross PYGMY at or above 8300, then on track 208° to KILLY, thence . . . .

. . . . on (transition). Maintain ATC assigned altitude. Expect filed altitude five minutes after departure.

EYCHO TRANSITION (KILLY1.EYCHO)  
EYESE TRANSITION (KILLY1.EYESE)  
RIDDG TRANSITION (KILLY1.RIDDG)



NW-1, 08 OCT 2020 to 05 NOV 2020