

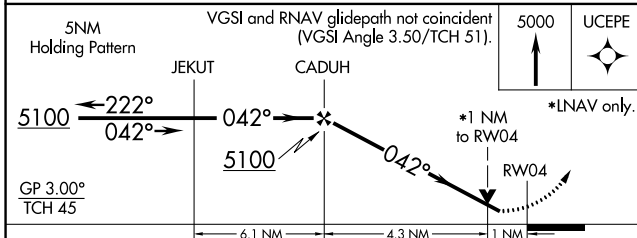
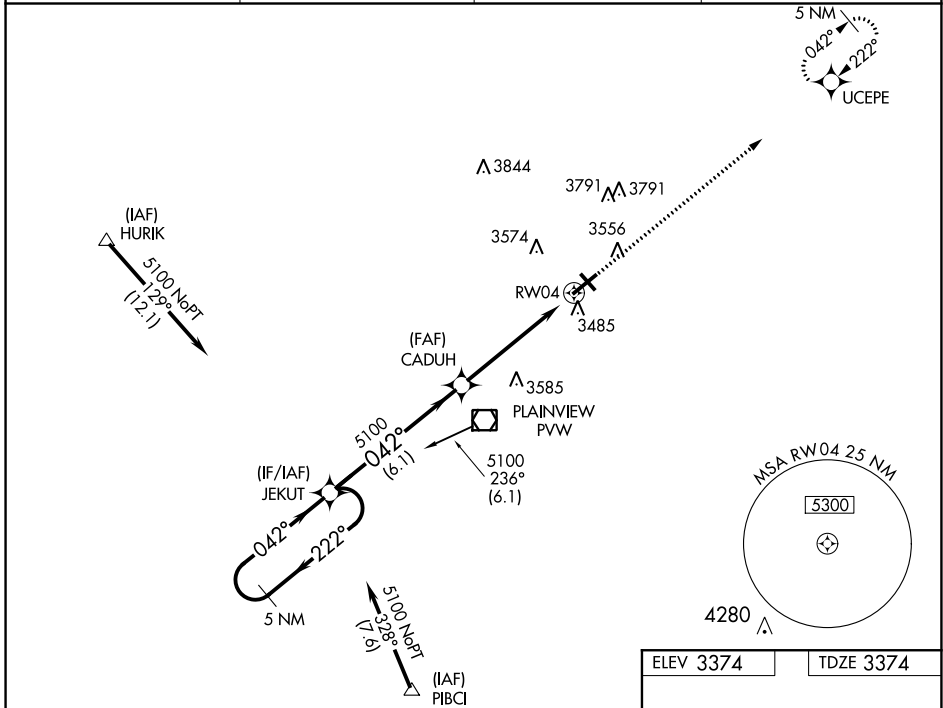
WAAS CH 53302 W04A	APP CRS 042°	Rwy Idg 5997 TDZE 3374 Apt Elev 3374
--	------------------------	---

RNAV (GPS) RWY 4

HALE COUNTY (PVW)

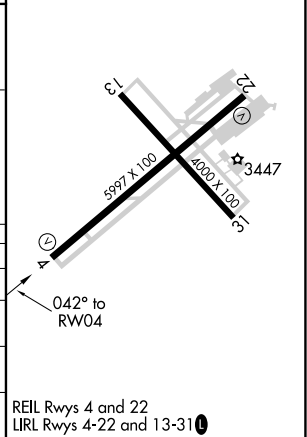
RNP APCH.	For uncompensated Baro-VNAV systems, LNAV/VNAV NA below -21°C or above 42°C. VDP and Baro-VNAV NA when using Lubbock altimeter setting. Rwy 4 helicopter visibility reduction below 3/4 SM NA. When local altimeter setting is not received, use Lubbock altimeter setting: increase all DA 83 feet and increase all LPV and LNAV/VNAV visibility 1/4 mile, increase all MDA 100 feet and LNAV Cat C/D and Circling Cat C visibility 1/4 mile.	MISSED APPROACH: Climb to 5000, direct UCEPE and hold.
-----------	--	--

ASOS 119.675	LUBBOCK APP CON 119.2 351.8	CLNC DEL 121.7	UNICOM 123.0 (CTAF) 0
------------------------	---------------------------------------	--------------------------	---------------------------------



CATEGORY	A	B	C	D
LPV DA		3624-1	250 (300-1)	
LNAV/VNAV DA		3730-1 1/4	356 (400-1 1/4)	
LNAV MDA	3800-1	426 (500-1)	3800-1 1/4	426 (500-1 1/4)
CIRCLING	3920-1 1/4 546 (600-1 1/4)	3940-1 1/4 566 (600-1 1/4)	3940-1 1/2 566 (600-1 1/2)	3940-2 566 (600-2)

ELEV 3374	TDZE 3374
-----------	-----------



SC-2, 08 OCT 2020 to 05 NOV 2020

SC-2, 08 OCT 2020 to 05 NOV 2020