

LOC I-CIU 110.3	APP CRS 157°	Rwy Idg 7203
		TDZE 799
		Apt Elev 799

ILS or LOC RWY 16

CHIPPEWA COUNTY INTL (CIU)

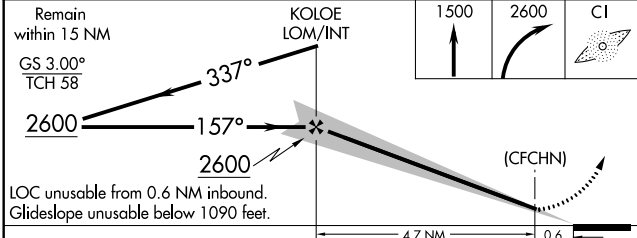
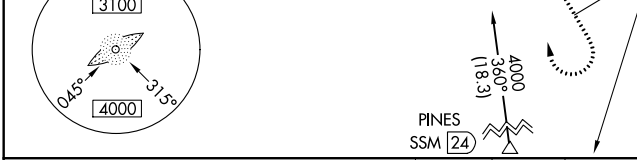
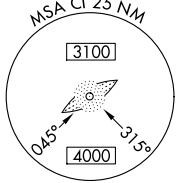
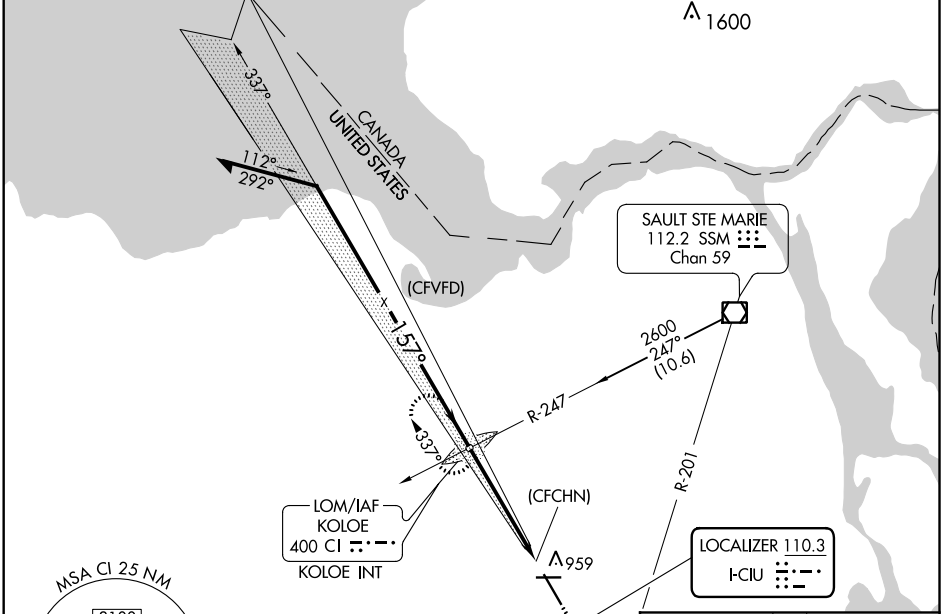
ADF required.

Autopilot coupled approach NA below 1380.

MALSRL

MISSED APPROACH: Climb to 1500 then climbing right turn to 2600 direct KOLOE LOM/INT and hold. (TACAN aircraft climb to 5000 on heading 160° and SSM VOR/DME R-201 to PINES/SSM 24 DME and hold south, right turn, 021° inbound.)

AWOS-3PT 127.575	TORONTO CENTER 132.65 344.5	UNICOM 123.0 (CTAF)
----------------------------	---------------------------------------	-------------------------------



ELEV	799	TDZE	799
157° 5.3 NM from FAF			
5000 X 75			
856			
7203 X 50			
897			
REIL Rwy 10, 28 and 34			
MRL Rwy 10-28			
HIRL Rwy 16-34			
FAF to MAP 4.7 NM			
Knots	60	90	120 150 180
Min:Sec	4:42	3:08	2:21 1:53 1:34

CATEGORY	A	B	C	D	E
S-ILS 16	1090-½ 291 (300-½)				
S-LOC 16	1160-½	361 (400-½)	1160-5/8	361 (400-5/8)	
◻ CIRCLING	1260-1	461 (500-1)	1260-1½	1360-2	1380-2
			461 (500-1½)	561 (600-2)	581 (600-2)

EC-1, 08 OCT 2020 to 05 NOV 2020

EC-1, 08 OCT 2020 to 05 NOV 2020