

WAAS CH 69516 W12A	APP CRS 123°	Rwy Idg TDZE Apt Elev	6006 3167 3179
--	------------------------	-----------------------------	---

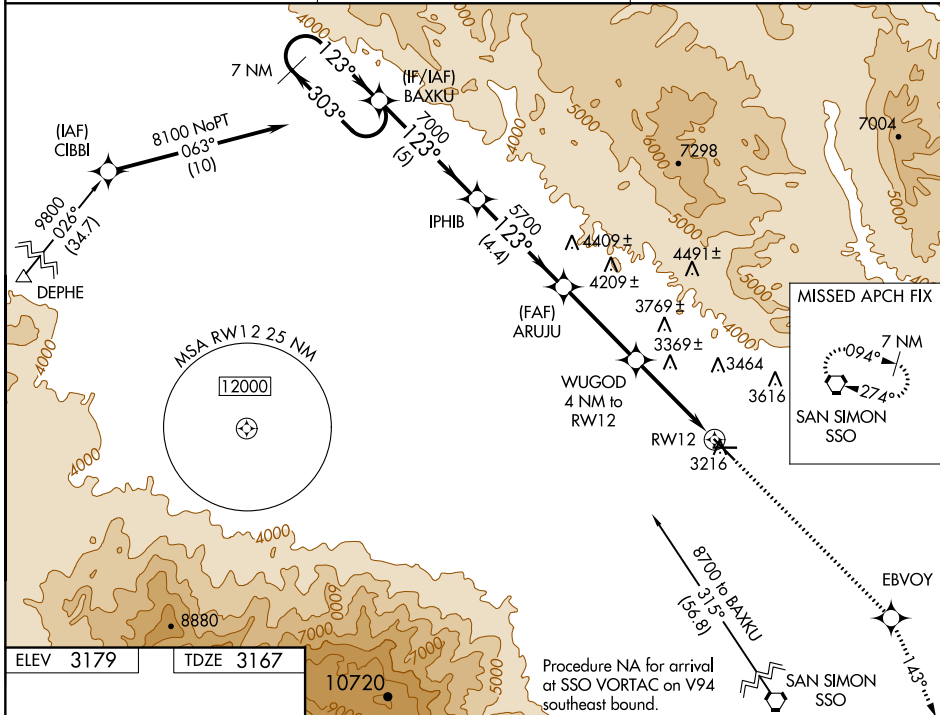
RNAV (GPS) RWY 12

SAFFORD RGNL (SAD)

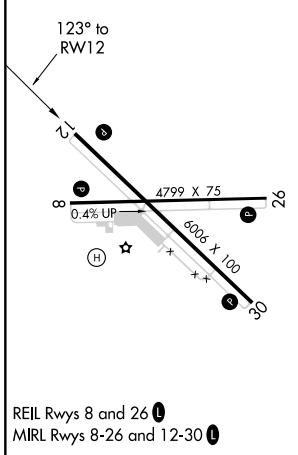
⚠ For uncompensated Baro-VNAV systems, LNAV/VNAV NA below -21°C (-5°F) or above 54°C (130°F). DME/DME RNP-0.3 NA.
Night landing: Rwy 8 NA.

MISSED APPROACH: Climb to 10000 direct EBVOY and on track 143° to SSO VORTAC and hold.

ASOS 124.175	ALBUQUERQUE CENTER 134.45 327.15	UNICOM 122.8 (CTAF) 0
------------------------	--	---------------------------------



ELEV 3179	TDZE 3167
-----------	-----------



7 NM Holding Pattern BAXKU		VGSi and RNAV glidepath not coincident (VGSi Angle 3.00/TCH 23).		10000	EBVOY	tr 143°	SSO	
8100	← 303°	→ 123°	7000	IPHIB	ARUJU 5700	WUGOD 4 NM to RW12	*1.6 NM to RW12	
	GP 3.00° TCH 38		5700		*4480		RW12	
				5 NM	4.4 NM	3.7 NM	2.4 NM	1.6 NM
CATEGORY	A	B	C	D				
LPV DA	3417-1	250 (300-1)	NA					
LNAV/VNAV DA	3635-1¾	468 (500-1¾)	NA					
LNAV MDA	3700-1	533 (600-1)	NA					
CIRCLING	3740-1	561 (600-1)	NA					

REIL Rwy 8 and 26
MIRL Rwy 8-26 and 12-30

32°51'N-109°38'W

SAFFORD RGNL (SAD)

RNAV (GPS) RWY 12

SW-4, 08 OCT 2020 to 05 NOV 2020

SW-4, 08 OCT 2020 to 05 NOV 2020