

AIRPORT DIAGRAM

AL-780 (FAA)

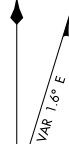
KANSAS CITY INTL (MCI)
KANSAS CITY, MISSOURI

D-ATIS
128.375
INTERNATIONAL TOWER
128.2 254.25
GND CON
121.8
CLNC DEL
135.7
CPDLC

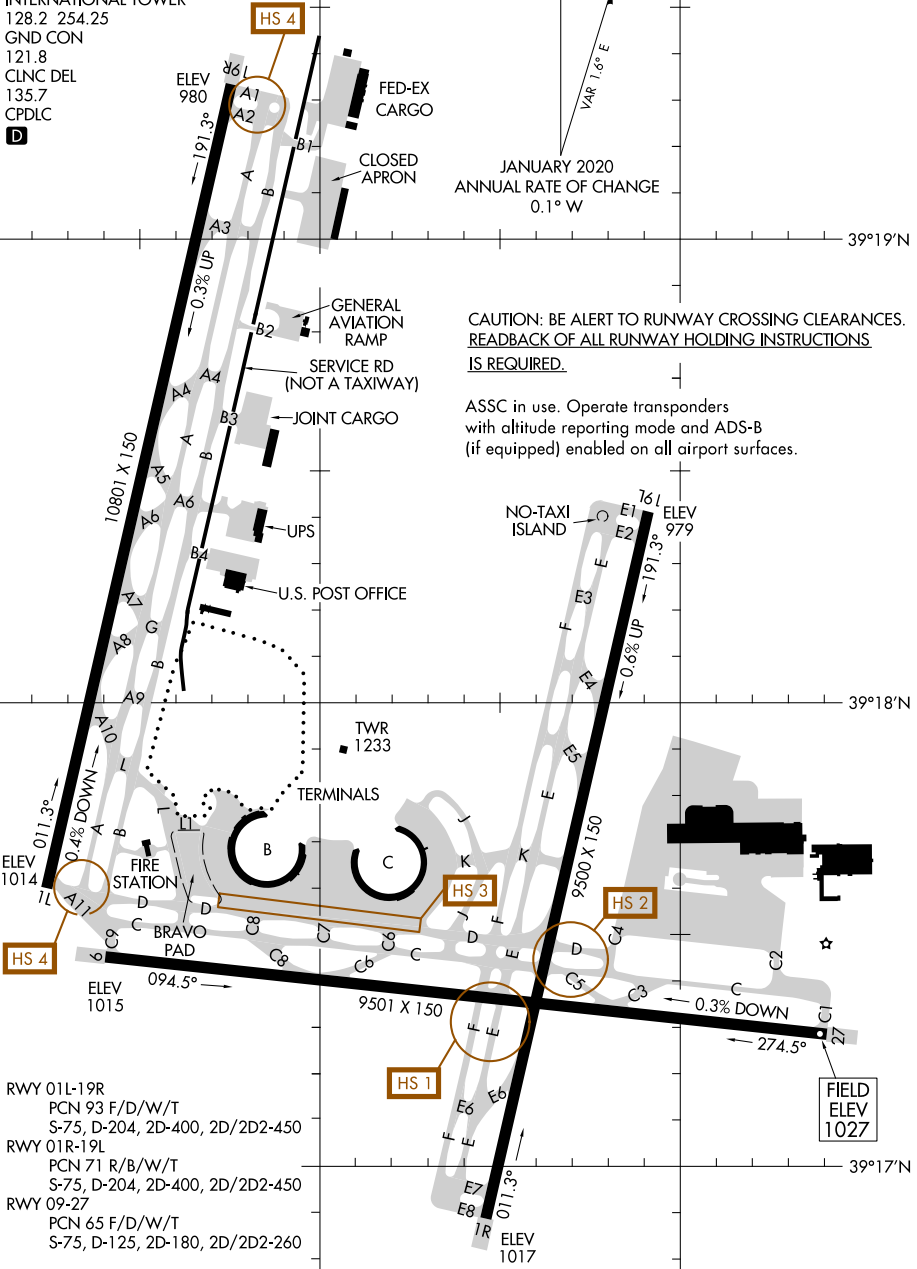
D

94°43'W

94°42'W



JANUARY 2020
ANNUAL RATE OF CHANGE
0.1° W



CAUTION: BE ALERT TO RUNWAY CROSSING CLEARANCES.
READBCK OF ALL RUNWAY HOLDING INSTRUCTIONS IS REQUIRED.

ASSC in use. Operate transponders with altitude reporting mode and ADS-B (if equipped) enabled on all airport surfaces.

NC-3, 08 OCT 2020 to 05 NOV 2020

NC-3, 08 OCT 2020 to 05 NOV 2020

RWY 01L-19R
PCN 93 F/D/W/T
S-75, D-204, 2D-400, 2D/2D2-450

RWY 01R-19L
PCN 71 R/B/W/T
S-75, D-204, 2D-400, 2D/2D2-450

RWY 09-27
PCN 65 F/D/W/T
S-75, D-125, 2D-180, 2D/2D2-260

AIRPORT DIAGRAM

KANSAS CITY, MISSOURI
KANSAS CITY INTL (MCI)