

MARYSVILLE, CALIFORNIA

# HI-ILS or LOC Z RWY 15

LOC I-BAB <b>109.5</b>	APCH CRS <b>145°</b>	Rwy ldg 12,001	TDZE 113	Arpt Elev 113
---------------------------	-------------------------	-------------------	-------------	------------------

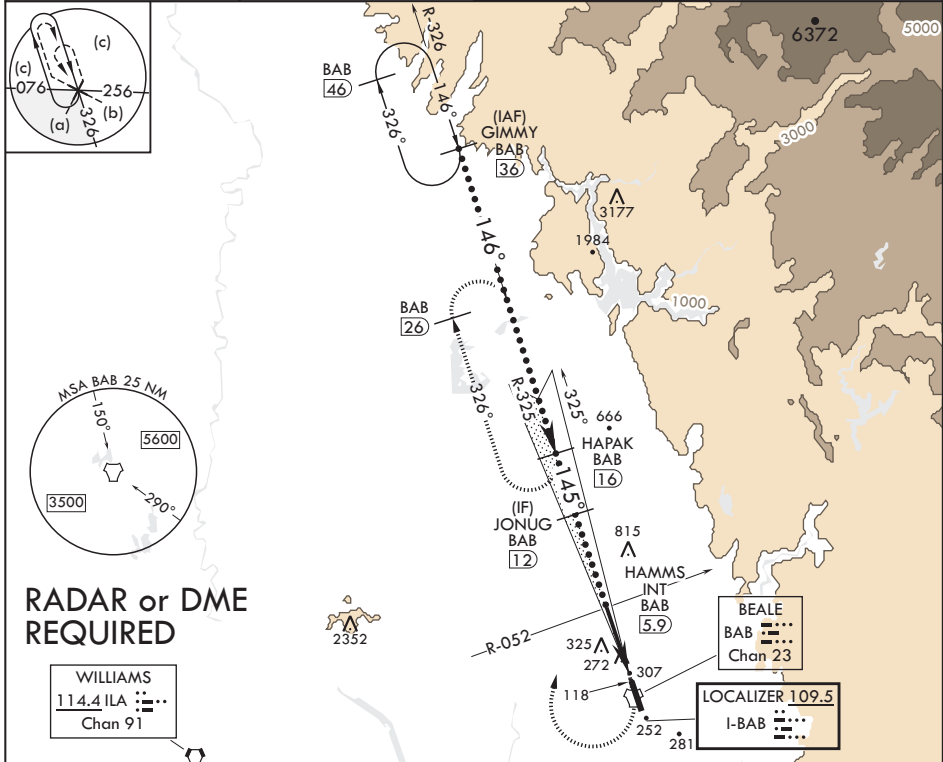
JAL-771 (USAF)

BEALE AFB (KBAB)

\* When ALS inop, increase CAT CDE RVR to 40 and vis to 3/4 mile.  
 \*\* When ALS inop, increase CAT CDE vis to 1 3/8 miles.  
 \*\*\* Circling not authorized E of Rwy 15-33.

**ALSF-1**  
 MISSED APPROACH: Climb to 4400 direct to BAB TACAN. Turn right to intercept BAB R-326 to HAPAK and hold, continue climb in hold to 4400.

ATIS* <b>124.55 273.5</b>	NORCAL APP CON <b>125.4 259.1</b>	TOWER* <b>119.4 284.75</b>	GND CON <b>121.6 257.75</b>
------------------------------	--------------------------------------	-------------------------------	--------------------------------



MARYSVILLE, CALIFORNIA 39°08'N - 121°26'W BEALE AFB (KBAB)

# Amdt 5 20JUL17 HI-ILS or LOC Z RWY 15

SW-2, 08 OCT 2020 to 05 NOV 2020

SW-2, 08 OCT 2020 to 05 NOV 2020