

# SWVAY FOUR ARRIVAL (RNAV)

DALLAS, TEXAS

020Z \0\0\0Z 2020 10 08 OCT 2020 10 05 NOV 2020

REGIONAL APP CON  
 135.975, 379.9  
 ADS ATIS  
 133.4  
 DAL ATIS  
 120.15  
 RBD ATIS  
 126.35

NOTE: RADAR required.

NOTE: RNAV 1.

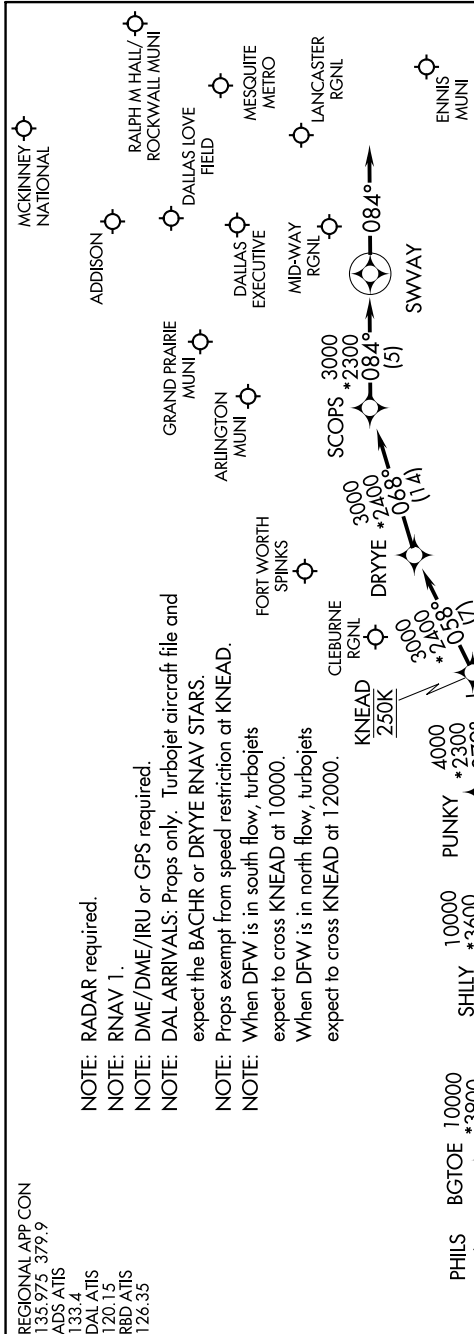
NOTE: DME/DME/IRU or GPS required.

NOTE: DAL ARRIVALS: Props only. Turbojet aircraft file and expect the BACHR or DRYEE RNAV STARS.

NOTE: Props exempt from speed restriction at KNEAD.

NOTE: When DFW is in south flow, turbojets expect to cross KNEAD at 10000.

NOTE: When DFW is in north flow, turbojets expect to cross KNEAD at 12000.



## ARRIVAL ROUTE DESCRIPTION

BGTOE TRANSITION (BGTOE.SWVAY4)

DITSY TRANSITION (DITSY.SWVAY4)

FRSTI TRANSITION (FRSTI.SWVAY4): (For ACT and GRK Terminal Area departures only).

SHILLY TRANSITION (SHILLY.SWVAY4): (For ABI Terminal Area departures only).

From KNEAD on track 058° to DRYEE, then on track 068° to SCOPs, then on track 084° to SWVAY, then on track 084°.

Expect RADAR vectors to final approach course.

NOTE: Chart not to scale.

# SWVAY FOUR ARRIVAL (RNAV)

(KNEAD.SWVAY4) 16JUL20

DALLAS, TEXAS

SC-2, 08 OCT 2020 to 05 NOV 2020