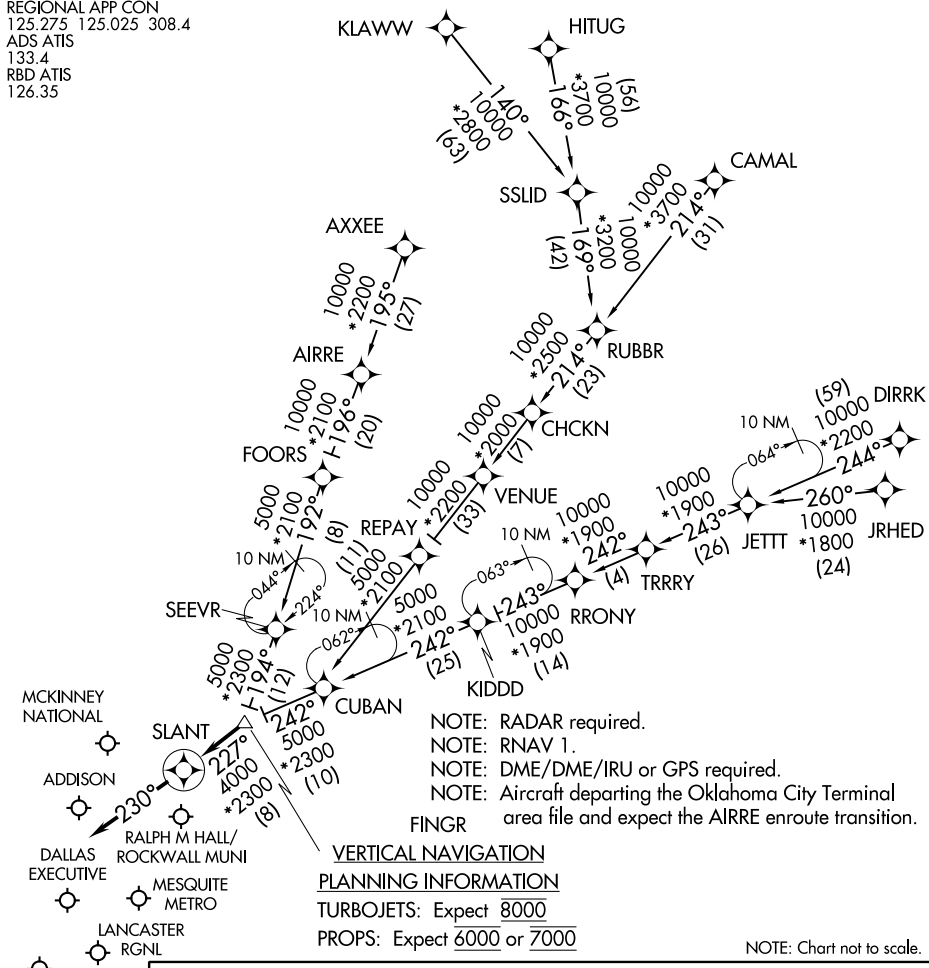


# SLANT THREE ARRIVAL (RNAV)

DALLAS, TEXAS

REGIONAL APP CON  
 125.275 125.025 308.4  
 ADS ATIS  
 133.4  
 RBD ATIS  
 126.35



SC-2, 08 OCT 2020 to 05 NOV 2020

SC-2, 08 OCT 2020 to 05 NOV 2020

**ARRIVAL ROUTE DESCRIPTION**

AIRRE TRANSITION (AIRRE.SLANT3): (For traffic filing FL190 and below.)  
AXXEE TRANSITION (AXXEE.SLANT3): (For aircraft filing FL230 and below.)  
CAMAL TRANSITION (CAMAL.SLANT3)  
DIRRK TRANSITION (DIRRK.SLANT3)  
HITUG TRANSITION (HITUG.SLANT3)  
JRHED TRANSITION (JRHEd.SLANT3): (ATC assigned only.)  
KLAWW TRANSITION (KLAWW.SLANT3)  
RRONY TRANSITION (RRONY.SLANT3): (For aircraft filing FL230 and below.)

From FINGR on track 227° to SLANT, then on track 230°.  
 Expect RADAR vectors to final approach course.

# SLANT THREE ARRIVAL (RNAV)

DALLAS, TEXAS