

D-ATIS
135.0
FORT LAUDERDALE TOWER
119.3 257.8
GND CON
121.4
CLNC DEL
128.4
CPDLC

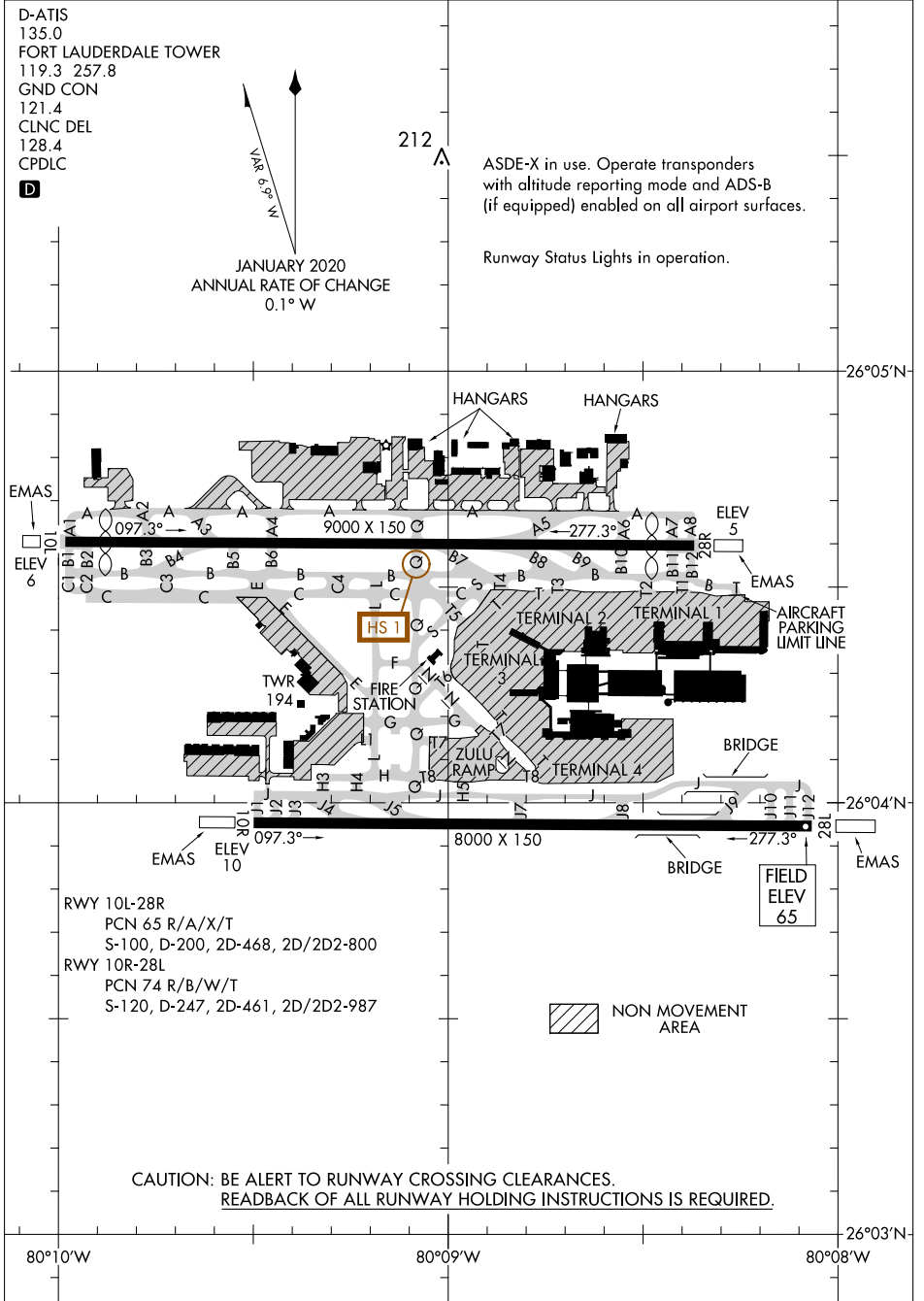


VAR 9° 56' W
212
JANUARY 2020
ANNUAL RATE OF CHANGE
0.1° W

ASDE-X in use. Operate transponders with altitude reporting mode and ADS-B (if equipped) enabled on all airport surfaces.
Runway Status Lights in operation.

SE-3, 08 OCT 2020 to 05 NOV 2020

SE-3, 08 OCT 2020 to 05 NOV 2020



CAUTION: BE ALERT TO RUNWAY CROSSING CLEARANCES.
READBACK OF ALL RUNWAY HOLDING INSTRUCTIONS IS REQUIRED.