

| | | |
|--|------------------------|---|
| WAAS CH 49116 W24A | APP CRS 236° | Rwy Idg 5000 TDZE 403 Apt Elev 407 |
|--|------------------------|---|

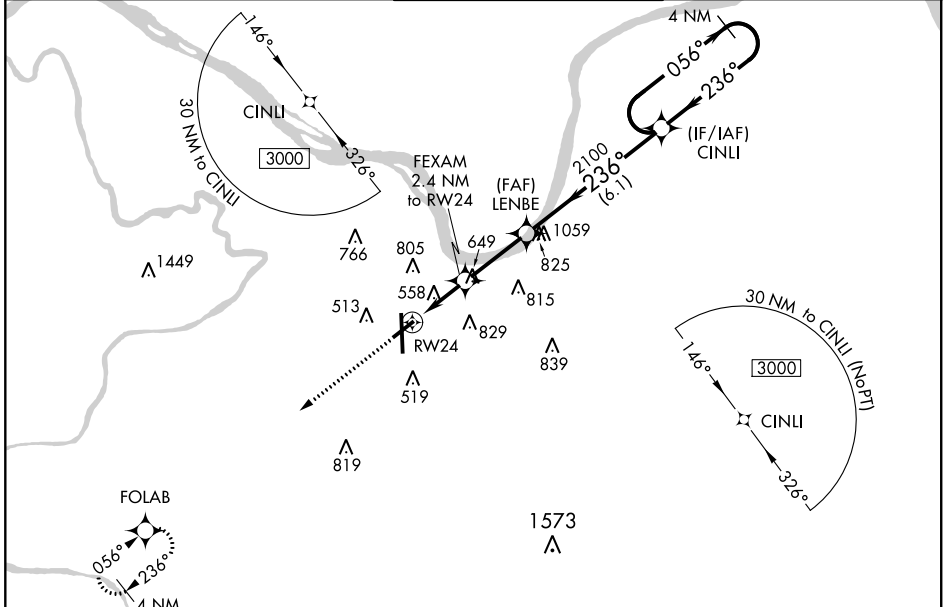
RNAV (GPS) RWY 24

OWENSBORO-DAVIESS COUNTY RGNL (OWB)

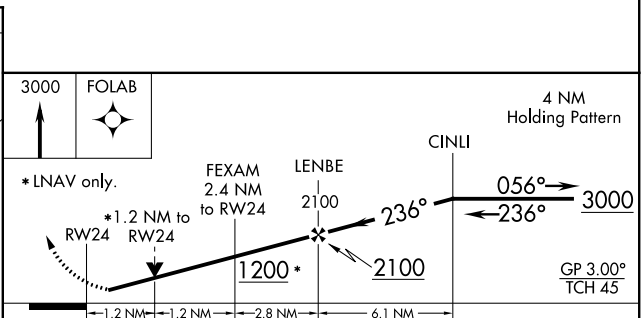
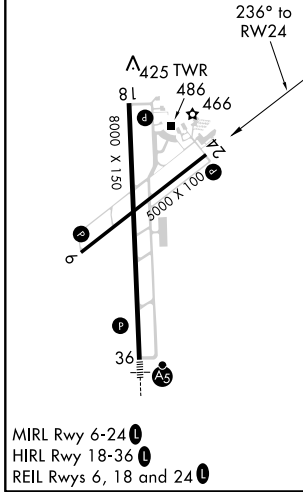
⚠ For uncompensated Baro-VNAV systems, LNAV/VNAV NA below -15°C (5°F) or above 54°C (130°F). DME/DME RNP-0.3 NA. Rwy 24 helicopter visibility reduction below 3/4 SM NA. When local altimeter setting not received, use Evansville altimeter setting: increase LPV DA to 712 feet and all Cats visibility 1/4 mile; increase LNAV/VNAV DA to 902 feet and all Cats visibility 1/4 mile; increase all MDA 60 feet and LNAV Cats C/D and Circling Cats C/D visibility 1/4 mile. Baro-VNAV and VDP NA when using Evansville altimeter setting.

MISSED APPROACH:
Climb to 3000 direct FOLAB and hold.

| | | | | |
|----------------------------|--|---|-------------------------|-------------------------|
| AWOS-3PT 119.025 | EVANSVILLE APP CON * 124.025 290.9 | OWENSBORO TOWER * 120.7 (CTAF) 0 251.15 | GND CON 121.7 | UNICOM 122.95 |
|----------------------------|--|---|-------------------------|-------------------------|



| | | |
|-----------------|----------|-----------------|
| ELEV 407 | D | TDZE 403 |
|-----------------|----------|-----------------|



| CATEGORY | A | B | C | D |
|--------------|----------------------|----------------------|---------------------------|-------------------------------|
| LPV DA | | 653-3/4 | 250 (300-3/4) | |
| LNAV/VNAV DA | | 843-1 1/2 | 440 (500-1 1/2) | |
| LNAV MDA | 820-1 | 417 (500-1) | 820-1 1/2 417 (500-1 1/2) | |
| CIRCLING | 860-1 453 (500-1) | 880-1 473 (500-1) | 1120-2 713 (800-2) | 1140-2 1/4 733 (800-2 1/4) |

SE-1, 08 OCT 2020 to 05 NOV 2020

SE-1, 08 OCT 2020 to 05 NOV 2020