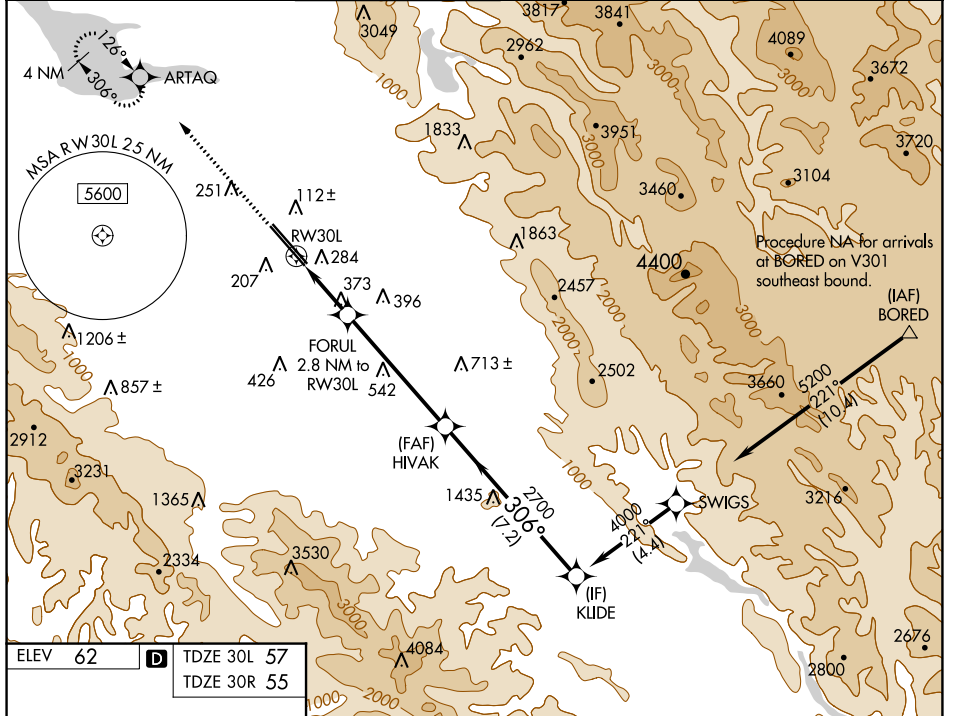


WAAS CH 97306 W30A	APP CRS 306°	Rwy Idg 7614	30L 7597	30R 55
		TDZE 57		
		Apt Elev 62		

RNAV (GPS) Y RWY 30L

NORMAN Y MINETA SAN JOSE INTL (SJC)

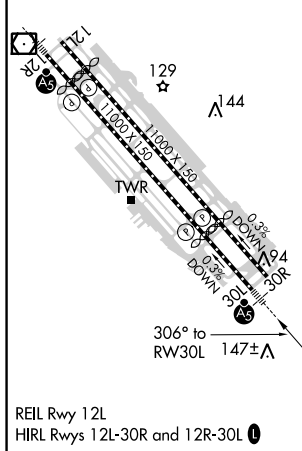
<p>▼ For uncompensated Baro-VNAV systems, LNAV/VNAV NA below -1°C (31°F) or above 54°C (130°F). DME/DME RNP-0.3 NA. # RVR 1800 authorized with use of FD or AP or HUD to DA.</p>				<p>MALSR Rwy 30L </p>	<p>MISSED APPROACH: Climb to 2300 direct ARTAQ and hold.</p>		
D-ATIS 126.95	NORCAL APP CON 120.1	290.25	SAN JOSE TOWER * 124.0 (CTAF) 257.6	GND CON 121.7	CLNC DEL 118.0	CPDLC	UNICOM 122.95



SW-2, 08 OCT 2020 to 05 NOV 2020

SW-2, 08 OCT 2020 to 05 NOV 2020

ELEV 62	D	TDZE 30L 57
		TDZE 30R 55



2300	ARTAQ	VGSI and RNAV glidepath not coincident (VGSI Angle 3.00/TCH 70).	KLIDE
		FORUL 2.8 NM to RWY 30L	HIVAK 2700
*LNAV only		*1.6 NM to RWY 30L	4000
		1000*	GP 3.00° TCH 54
		1.6 NM	1.2 NM
		5.3 NM	7.2 NM

CATEGORY	A	B	C	D
LPV DA #		257/24	200 (200-½)	
LNAV/VNAV DA		540/60	483 (500-1¼)	
LNAV MDA	640/24	583 (600-½)	640-1¼	583 (600-1¼)
SIDESTEP 30R	640-1 585 (600-1)			