

# RNAV (RNP) Z RWY 30L

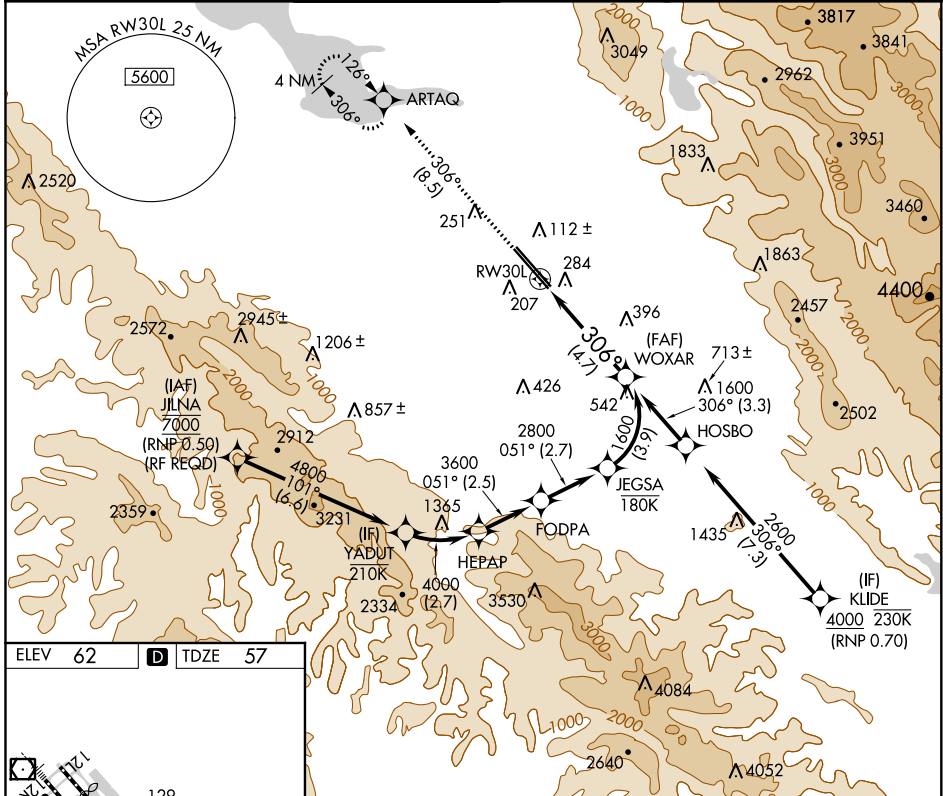
## NORMAN Y MINETA SAN JOSE INTL (SJC)

APP CRS	Rwy Idg	<b>7614</b>
<b>306°</b>	TDZE	<b>57</b>
	Apt Elev	<b>62</b>

▼ For uncompensated Baro-VNAV systems, procedure NA below -1°C (31°F) or above 54°C (130°F). GPS required. For inoperative MALSR, increase RNP 0.15 all Cats visibility to RVR 6000 and increase RNP 0.30 all Cats visibility to 1½ mile.

MALSR MISSED APPROACH: Climb to 2300 on track 306° to ARTAQ and hold.

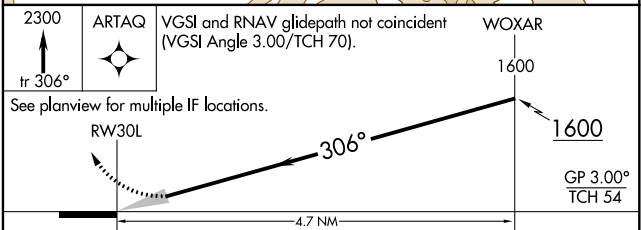
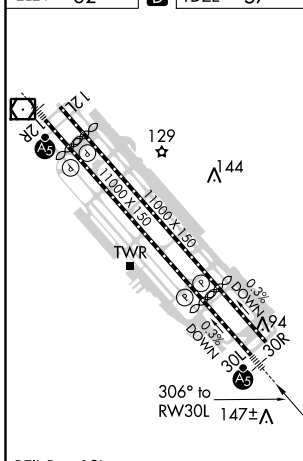
D-ATIS	NORCAL APP CON	SAN JOSE TOWER ★	GND CON	CLNC DEL	CPDLC	UNICOM
<b>126.95</b>	<b>120.1 290.25</b>	<b>124.0 (CTAF) 0 257.6</b>	<b>121.7</b>	<b>118.0</b>		<b>122.95</b>



SW-2, 08 OCT 2020 to 05 NOV 2020

SW-2, 08 OCT 2020 to 05 NOV 2020

ELEV 62	<b>D</b>	TDZE 57
---------	----------	---------



CATEGORY	A	B	C	D
RNP 0.15 DA		421/40	364 (400-¾)	
RNP 0.30 DA		544/60	487 (500-1¼)	

REIL Rwy 12L  
HIRL Rwy 12L-30R and 12R-30L

**AUTHORIZATION REQUIRED**