

APP CRS	Rwy Idg	4801
086°	TDZE	188
	Apt Elev	189

RNAV (GPS) RWY 10

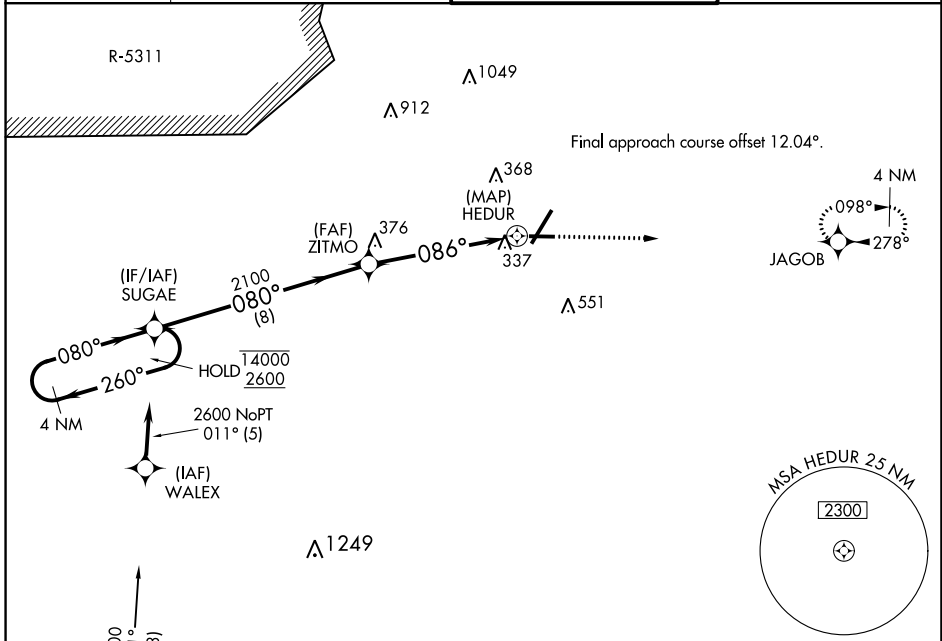
FAYETTEVILLE RGNL/GRANNIS FIELD (FAY)

RNP APCH.

▽ Rwy 10 helicopter visibility reduction below 3/4 SM NA.

MISSED APPROACH: Climb to 2600 direct JAGOB and hold.

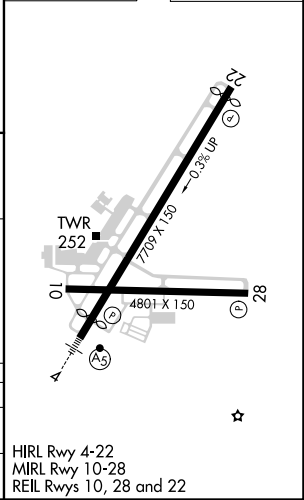
ATIS 121.25	FAYETTEVILLE APP CON 133.0 290.25	FAYETTEVILLE TOWER 118.3 269.2	GND CON 121.7 348.6
-----------------------	---	--	-------------------------------



SE-2, 08 OCT 2020 to 05 NOV 2020

SE-2, 08 OCT 2020 to 05 NOV 2020

ELEV 189	D	TDZE 188
----------	----------	----------



4 NM Holding Pattern	2600	JAGOB
SUGAE	ZITMO	HEDUR
1400 ← 260°	2100	1.4 NM to RWY 10
2600 → 080°	086°	3.00° TCH 45
	8 NM	4.5 NM
		0.9 NM
		0.5 NM

CATEGORY	A	B	C	D
LNVA MDA	660-1	472 (500-1)	660-1 3/8	472 (500-1 3/8)
C CIRCLING	660-1	471 (500-1)	860-2 671 (700-2)	860-2 1/4 671 (700-2 1/4)

HIRL Rwy 4-22
MIRL Rwy 10-28
REIL Rwy 10, 28 and 22