

LOC/DME I-MCE <b>109.3</b> Chan <b>30</b>	APP CRS <b>123°</b>	Rwy Idg TDZE <b>155</b> Apt Elev <b>155</b>	<b>5914</b>
---	------------------------	---	-------------

# LOC BC RWY 12

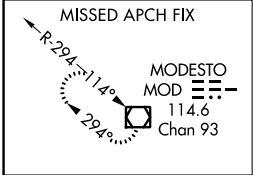
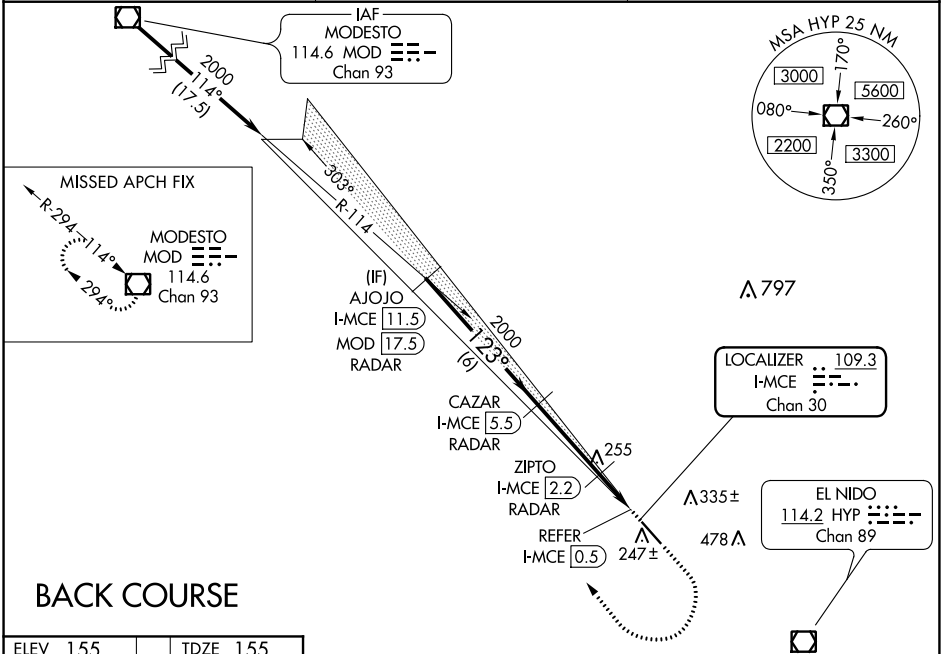
MERCED RGNL/MACREADY FIELD (MCE)

DME or RADAR required.

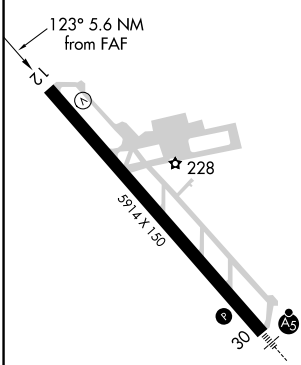
▼ Rwy 12 helicopter visibility reduction below 3/4 SM NA.  
▲ NA Circling NA northeast of Rwy 12-30.

MISSED APPROACH: Climb to 1000 then climbing right turn to 3000 direct MOD VOR/DME and hold.

ASOS <b>132.175</b>	NORCAL APP CON <b>120.95 269.45</b>	UNICOM <b>122.7 (CTAF) 0</b>
------------------------	--	---------------------------------



ELEV <b>155</b>	TDZE <b>155</b>
-----------------	-----------------



REIL Rwy 12 0  
HIRL Rwy 12-30 0

FAF to MAP 5 NM

Knots	60	90	120	150	180
Min:Sec	5:00	3:20	2:30	2:00	1:40

	AJOJO I-MCE [11.5] RADAR	CAZAR I-MCE [5.5] RADAR	ZIPTO I-MCE [2.2] RADAR	REFER I-MCE [0.5]	1000 3000 MOD
	2000	2000	640	640	
Disregard glide slope indications. 3.00° TCH 53					
	6 NM	3.3 NM	1.3 NM	0.4 NM	0.6 NM
CATEGORY	A		B		C D
S-12	640-1 485 (500-1)		640-1 3/8 485 (500-1 3/8)		
CIRCLING	640-1 485 (500-1)		640-1 1/2 485 (500-1 1/2)		720-2 565 (600-2)
ZIPTO FIX MINIMUMS					
S-12	520-1 365 (400-1)		NA		
CIRCLING	560-1 405 (500-1)		620-1 465 (500-1)		620-1 1/2 465 (500-1 1/2) 720-2 565 (600-2)

SW-2, 08 OCT 2020 to 05 NOV 2020

SW-2, 08 OCT 2020 to 05 NOV 2020