

LOC/DME I-MCE 109.3 Chan 30	APP CRS 304°	Rwy Idg TDZE 155 Apt Elev 155
--	------------------------	---

ILS or LOC RWY 30

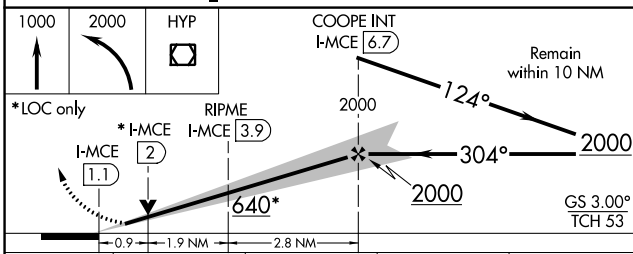
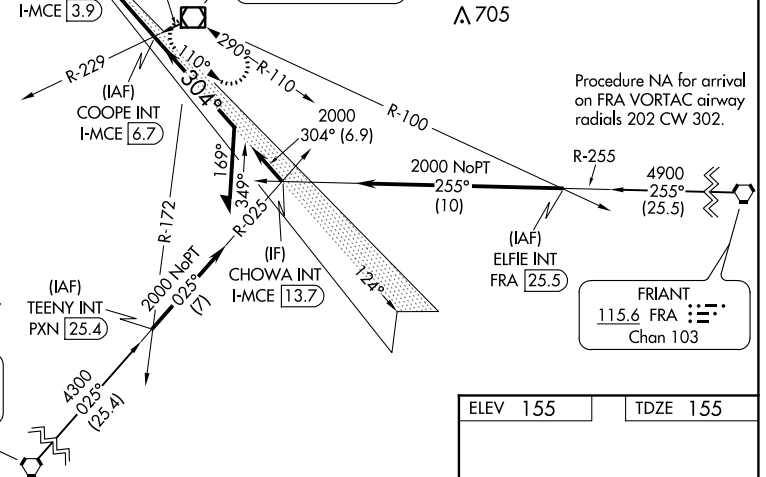
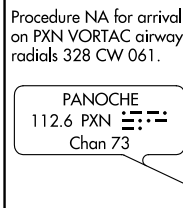
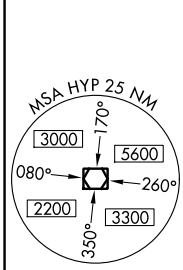
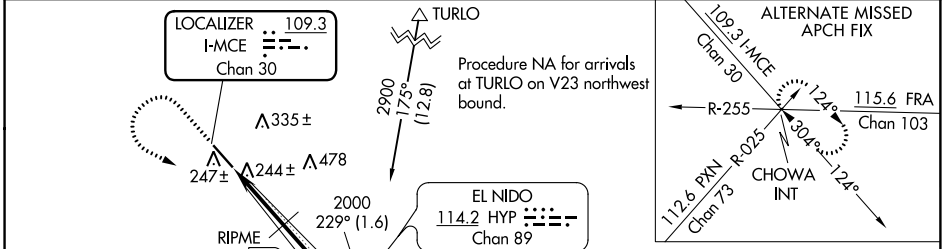
MERCED RGNL/MACREADY FIELD (MCE)

NA For inop ALS, increase S-LOC visibility to 1 SM.

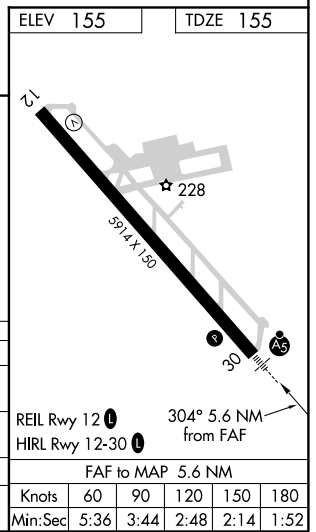
MALSRL

MISSED APPROACH: Climb to 1000 then climbing left turn to 2000 direct HYP VOR/DME and hold.

ASOS 132.175	NORCAL APP CON 120.95 269.45	UNICOM 122.7 (CTAF)
------------------------	--	-------------------------------



CATEGORY	A	B	C	D
S-ILS 30		355-½	200 (200-½)	
S-LOC 30	640-¾	485 (500-¾)	640-1	485 (500-1)
RIPME FIX MINIMUMS				
S-LOC 30		500-¾	345 (400-¾)	



SW-2, 08 OCT 2020 to 05 NOV 2020

SW-2, 08 OCT 2020 to 05 NOV 2020