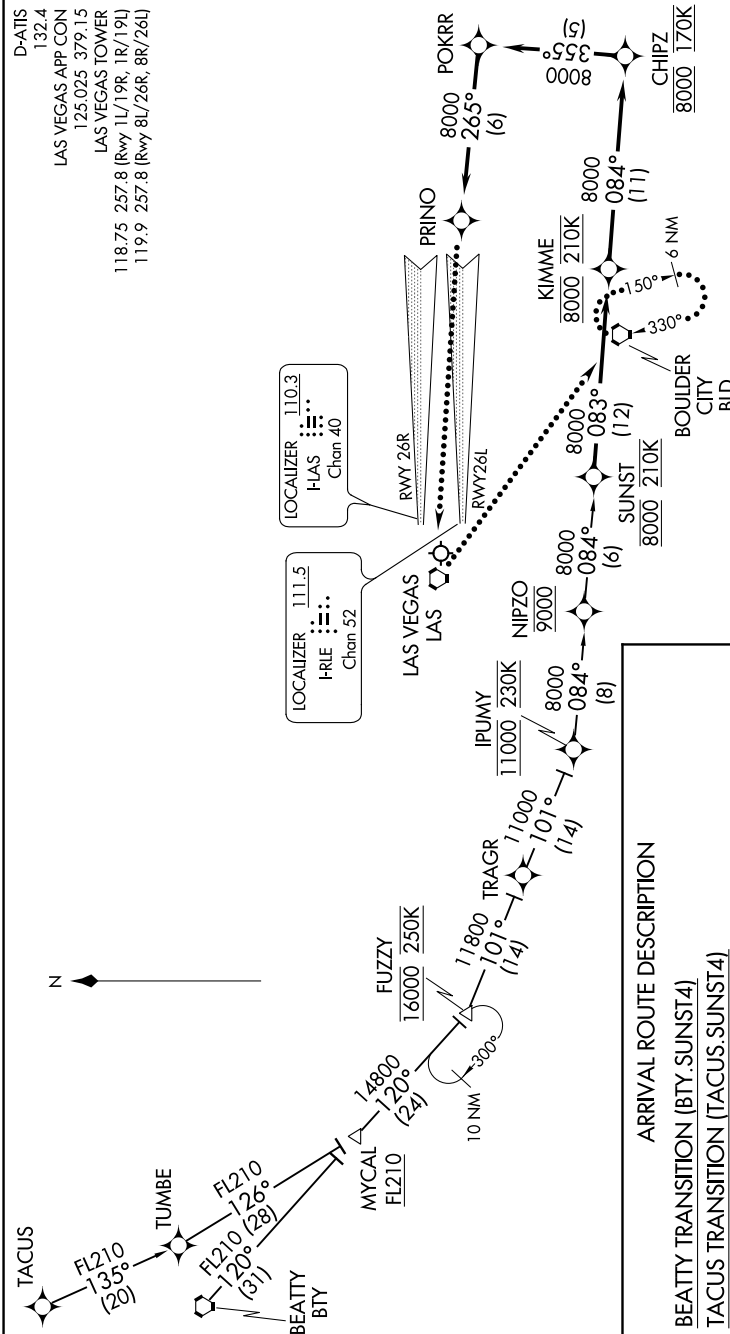


SUNST FOUR ARRIVAL (RNAV)

AL-662 (FAA)

MC CARRAN INTL (LAS)
LAS VEGAS, NEVADA

0200 \ 00 \ 00 \ 00 \ 00 \ 00 \ 05 \ NOV \ 2020



D-AITS 132.4
LAS VEGAS APP CON 125.025 379 1.5
LAS VEGAS TOWER 118.75 257.8 (Rwy 1L/19R, 1R/19L)
119.9 257.8 (Rwy 8L/26R, 8R/26L)

LOCALIZER 111.5
HRL Chan 52

LOCALIZER 110.3
HIAS Chan 40

NOTE: RADAR required.
NOTE: RNAV 1.
NOTE: DME/DME/IRU or GPS required.
NOTE: For non-GPS equipped aircraft, BTY, PMD, and LSV DMEs must be operational.

NOTE: Chart not to scale.

ARRIVAL ROUTE DESCRIPTION

BEATTY TRANSITION (BTY.SUNST4)
TACUS TRANSITION (TACUS.SUNST4)

From SUNST on track 083° to cross KIMME at 8000 and at 210K, then as depicted to PRINO. Rwy 26L, intercept the Rwy 26L localizer.

LOST COMMUNICATIONS
At PRINO, execute ILS RWY 26L approach, if unable, proceed direct LAS VORTAC, then direct BLD VORTAC and hold, maintain 8000.

SW-4, 08 OCT 2020 to 05 NOV 2020