

|   |                        |  |
|---|------------------------|--|
| LOC/DME I-AVP<br><b>109.9</b><br>Chan <b>36</b> | APP CRS<br><b>045°</b> | Rwy Idg<br>TDZE<br>Apt Elev<br><b>7501</b><br><b>962</b><br><b>962</b> |
|---|------------------------|--|

# ILS or LOC RWY 4

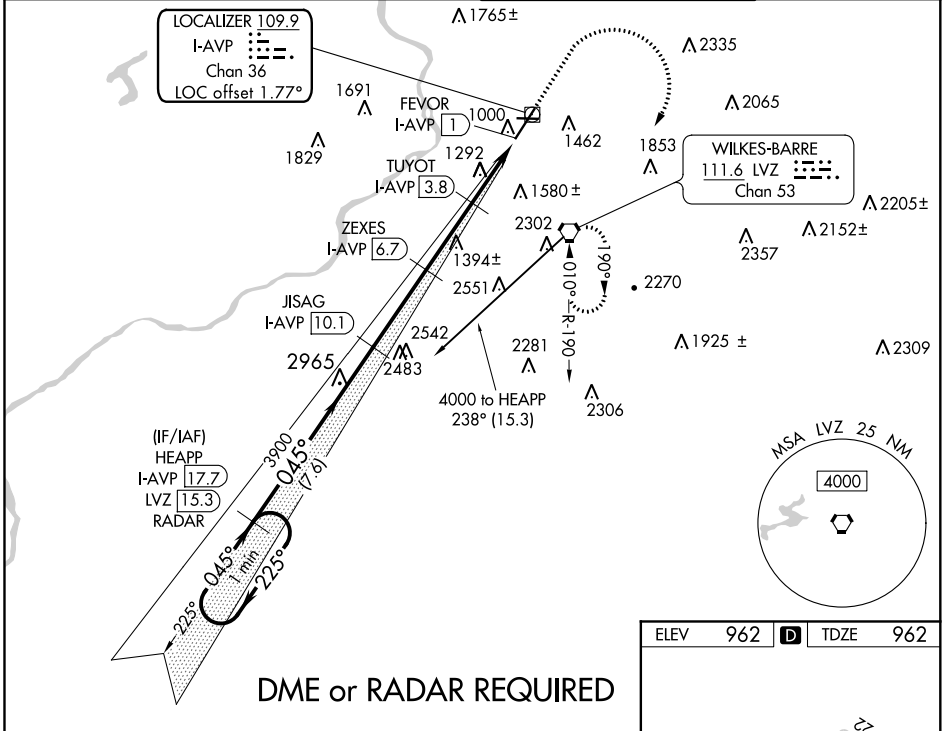
WILKES-BARRE/SCRANTON INTL (AVP)

**⚠** Circling to Rwy 10, 28 NA at night. Circling NA for Cats C and D southeast of Rwy 4-22. Autopilot coupled approach NA below 2530. DME required. For inop ALS, increase S-ILS 4 all Cats visibility to RVR 5000, and S-LOC 4 Cat C/D visibility to 1½ SM.

**MALSR**  
AS

**MISSED APPROACH:**  
Climb to 3000 then climbing right turn to 4000 direct LVZ VORTAC and hold.

|                      |   |  |                         |
|----------------------|---|--|-------------------------|
| ATIS<br><b>111.6</b> | WILKES-BARRE APP CON<br><b>120.95 256.7</b> (280°-100°)<br><b>126.3 256.7</b> (101°-279°) | WILKES-BARRE TOWER<br><b>120.1 257.8</b> | GND CON<br><b>121.9</b> |
|----------------------|---|--|-------------------------|



NE-4, 08 OCT 2020 to 05 NOV 2020

NE-4, 08 OCT 2020 to 05 NOV 2020

One Minute Holding Pattern

VGSI and ILS glidepath not coincident (VGSI Angle 3.00/TCH 58).

**3000** **4000** **LVZ**

**4000** **225°** **045°**

**GS 3.00° TCH 56**

**HEAPP**  
I-AVP **17.7**  
RADAR

**JISAG**  
I-AVP **10.1**

**ZEXES**  
I-AVP **6.7**

**TUYOT**  
I-AVP **3.8**

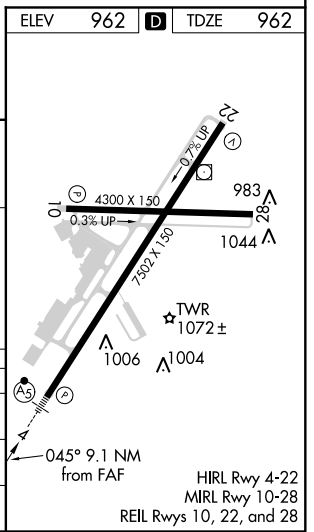
**FEVOR**  
I-AVP **1**

**\*LOC only**

**\*I-AVP 2.7**

**3900** **2820** **1900**

**7.6 NM** **3.4 NM** **2.9 NM** **1.2 NM** **1.6 NM**



| CATEGORY          | A                       | B                         | C                       | D                       |
|-------------------|-------------------------|---------------------------|-------------------------|-------------------------|
| S-ILS 4           | 1262/24                 |                           | 300 (300-1)             |                         |
| S-LOC 4           | 1540/24                 | 578 (600-1)               | 1540-1¼                 | 578 (600-1¼)            |
| <b>C</b> CIRCLING | 1840-1¼<br>878 (900-1¼) | 1980-1½<br>1018 (1100-1½) | 1980-3<br>1018 (1100-3) | 2280-3<br>1318 (1400-3) |