

WAAS CH <b>65709</b> <b>W09A</b>	APP CRS <b>094°</b>	Rwy Idg <b>11640</b> TDZE <b>883</b> Apt Elev <b>896</b>
--	------------------------	--

# RNAV (GPS) Y RWY 9

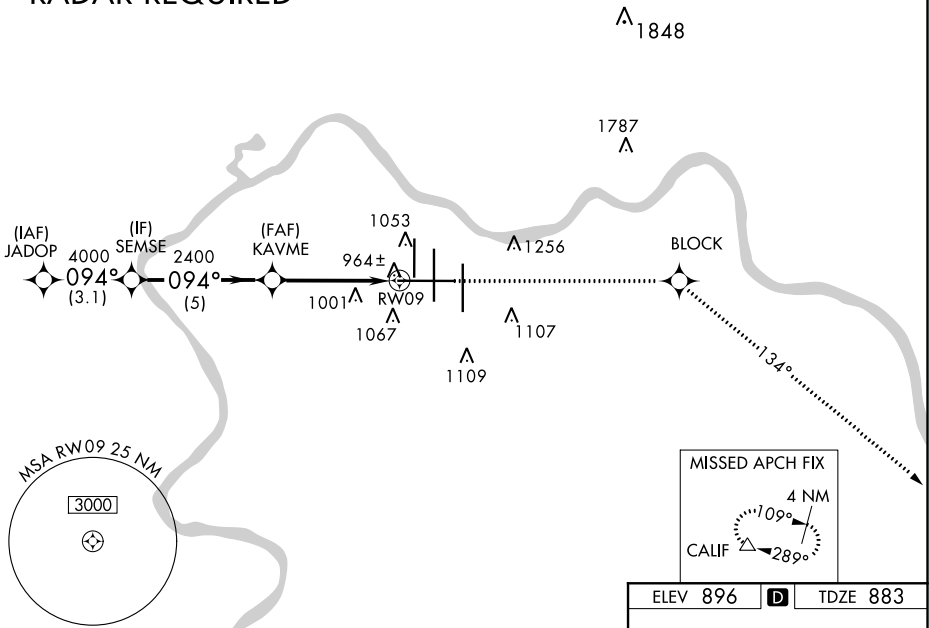
CINCINNATI/NORTHERN KENTUCKY INTL (CVG)

**▼** For inoperative MALSR, increase LNAV Cat D visibility to RVR 6000.  
For uncompensated Baro-VNAV systems, LNAV/VNAV NA below -16° C (4° F) or above 47° C (116° F).  
DME/DME RNP-0.3 NA.

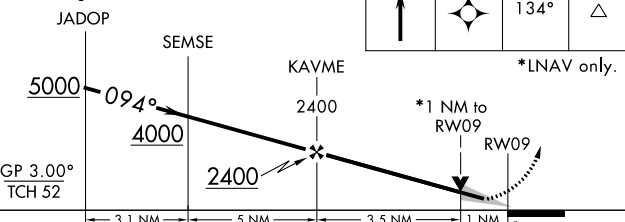
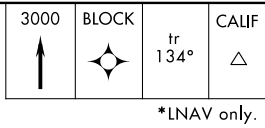
MALSR 	MISSED APPROACH: Climb to 3000 direct BLOCK and on 134° track to CALIF and hold.
-----------	--

D-ATIS ARR <b>134.375</b> DEP <b>135.3</b>	CINCINNATI APP CON <b>119.7 363.15</b> (090°-269°) <b>123.875 363.15</b> (270°-089°)	CINCINNATI TOWER <b>118.975 360.85</b> (RWY 18L/36R) <b>118.3</b> (RWYS 18C/36C, 09/27) <b>133.325</b> (RWY 18R/36L)	GND CON <b>121.7</b>	CLNC DEL <b>127.175</b>
---	--	---	-------------------------	----------------------------

## RADAR REQUIRED



VGSI and RNAV glidepath not coincident (VGSI Angle 3.00/TCH 70).



ELEV 896	<b>D</b>	TDZE 883
----------	----------	----------

18L 18R 36L 36R  
12000  
10000 X 150  
10000 X 150  
1159  
TWR  
0.3% DOWN 36L  
0.6% UP 36R  
0.94° to RWY 09  
HIRL all Rwys  
TDZ/CL all Rwys except 27

CATEGORY	A	B	C	D
LPV DA		1083/18	200 (200-½)	
LNAV/VNAV DA		1297/50	414 (500-1)	
LNAV MDA		1260/24	377 (400-½)	1260/50 377 (400-1)
CIRCLING	1460-1	564 (600-1)	1460-1½ 564 (600-1½)	1560-2 664 (700-2)

SE-1, 08 OCT 2020 to 05 NOV 2020

SE-1, 08 OCT 2020 to 05 NOV 2020