

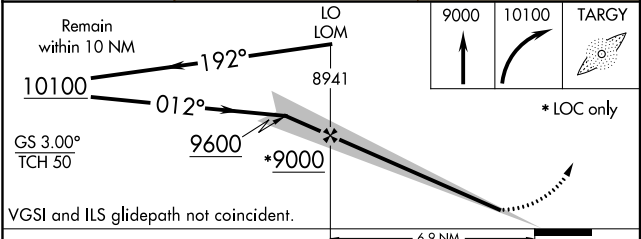
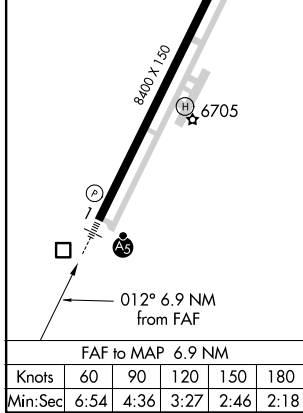
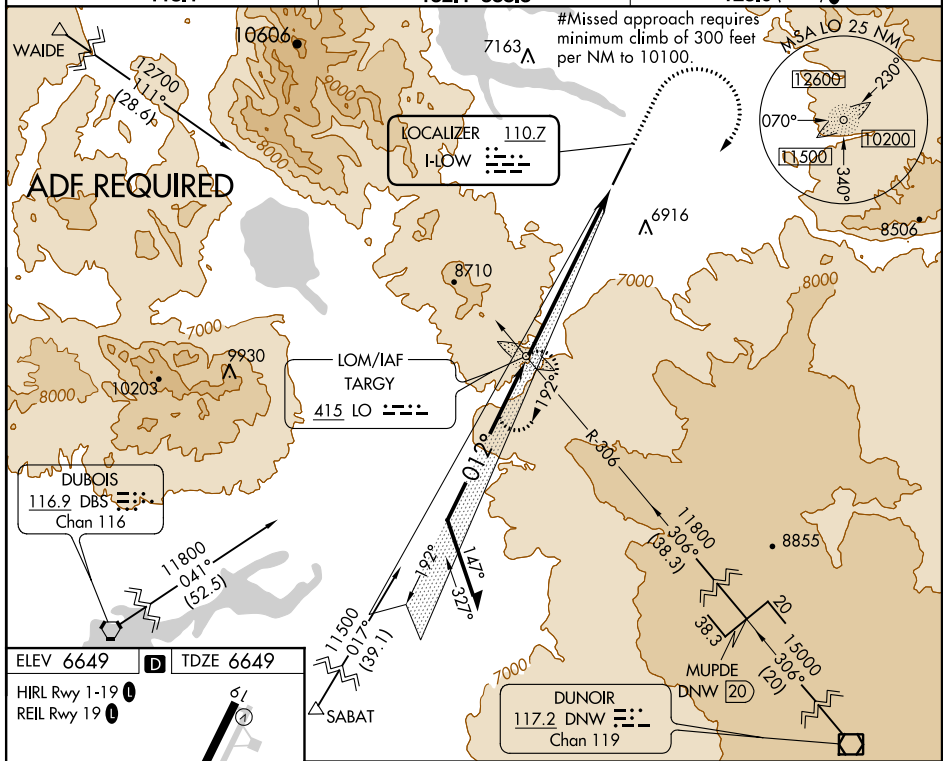
LOC I-LOW 110.7	APP CRS 012°	Rwy Idg TDZE Apt Elev	8399 6649 6649
---------------------------	------------------------	-----------------------------	---

ILS or LOC RWY 1

YELLOWSTONE (WYS)

<p>▼ ▲ NA ⚡ -19°C</p> <p>Obtain local altimeter setting on CTAF, when not received procedure NA. Inoperative table does not apply to S-LOC 1 Cat A. ADF required. For inoperative MALSR, increase S-ILS 1 all Cats visibility to 2 3/4 mile.</p>	<p>MALSR</p> <p>MISSED APPROACH: Climb to 9000, then climbing right turn to 10100 direct TARGY LOM and hold.</p>
--	--

AWOS-3P 118.1	SALT LAKE CENTER 132.4 338.3	UNICOM 123.0 (CTAF) 0
-------------------------	--	---------------------------------



CATEGORY	A	B	C	D
S-ILS 1#		6849-1/2	200 (200-1/2)	
S-ILS 1		7449-2 1/4	800 (800-2 1/4)	
S-LOC 1	7780-1 1/4 1131 (1200-1 1/4)	7780-1 1131 (1200-1)	7780-2 1/2 1131 (1200-2 1/2)	
CIRCLING	7780-1 1/4 1131 (1200-1 1/4)	7780-1 1/2 1131 (1200-1 1/2)	7780-3 1131 (1200-3)	8020-3 1371 (1400-3)

NW-1, 08 OCT 2020 to 05 NOV 2020

NW-1, 08 OCT 2020 to 05 NOV 2020