

LOC I-PIE 109.1	APP CRS 176°	Rwy Idg TDZE Apt Elev 9180 7 11
---------------------------	------------------------	---

ILS or LOC RWY 18

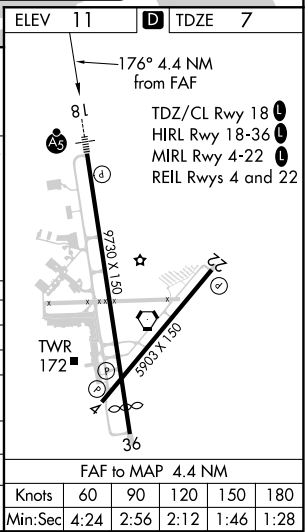
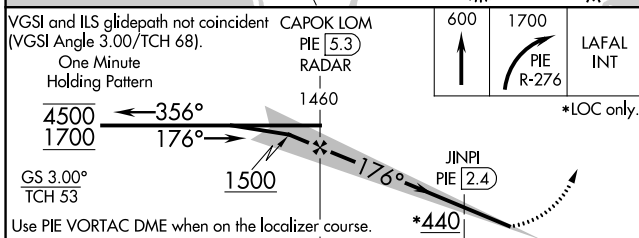
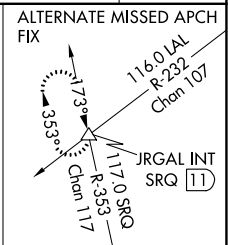
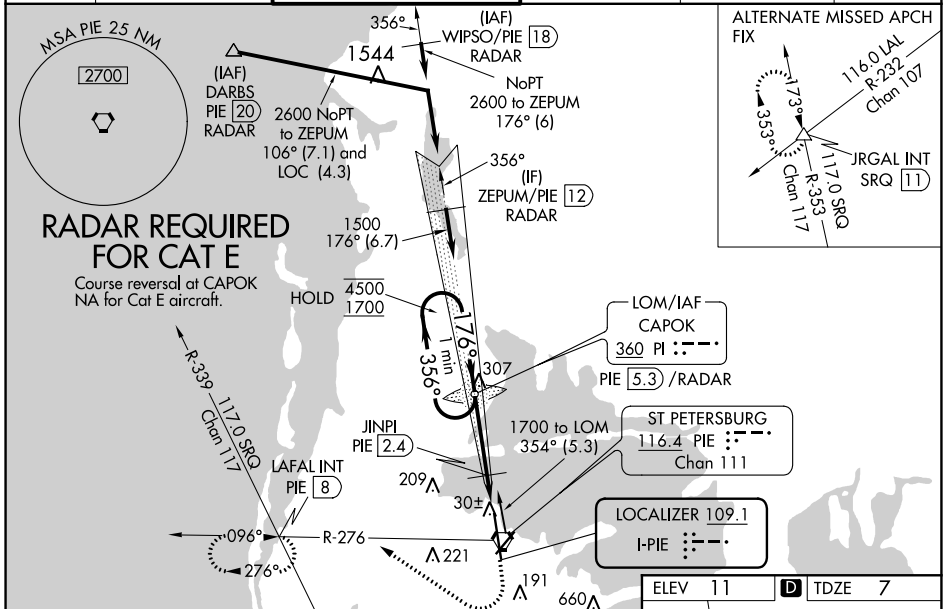
ST PETE-CLEARWATER INTL (PIE)

DME, RADAR, or ADF required.

MALS

MISSED APPROACH: Climb to 600 then climbing right turn to 1700 on PIE VORTAC R-276 to LAFAL INT/PIE 8 DME and hold.

ATIS 134.5	TAMPA APP CON 125.3 316.05	ST. PETERSBURG TOWER* 118.3 (CTAF) 0 257.8	GND CON 121.9 348.6	CLNC DEL 120.6 350.2	UNICOM 122.95
----------------------	--------------------------------------	--	-------------------------------	--------------------------------	-------------------------



CATEGORY	A		B		C		D		E	
	2.9 NM		1.5 NM							
S-ILS 18			207/18		200 (200-1/2)					
S-LOC 18	440/24		433 (500-1/2)		440/40		433 (500-3/4)			
C CIRCLING	520-1		509 (600-1)		640-1 3/4		680-2		960-3	
					629 (700-1 3/4)		669 (700-2)		949 (1000-3)	
**JINPI FIX MINIMUMS										
S-LOC 18	300/24		293 (300-1/2)							
C CIRCLING	520-1		509 (600-1)		640-1 3/4		680-2		960-3	
					629 (700-1 3/4)		669 (700-2)		949 (1000-3)	

SE-3, 08 OCT 2020 to 05 NOV 2020

SE-3, 08 OCT 2020 to 05 NOV 2020