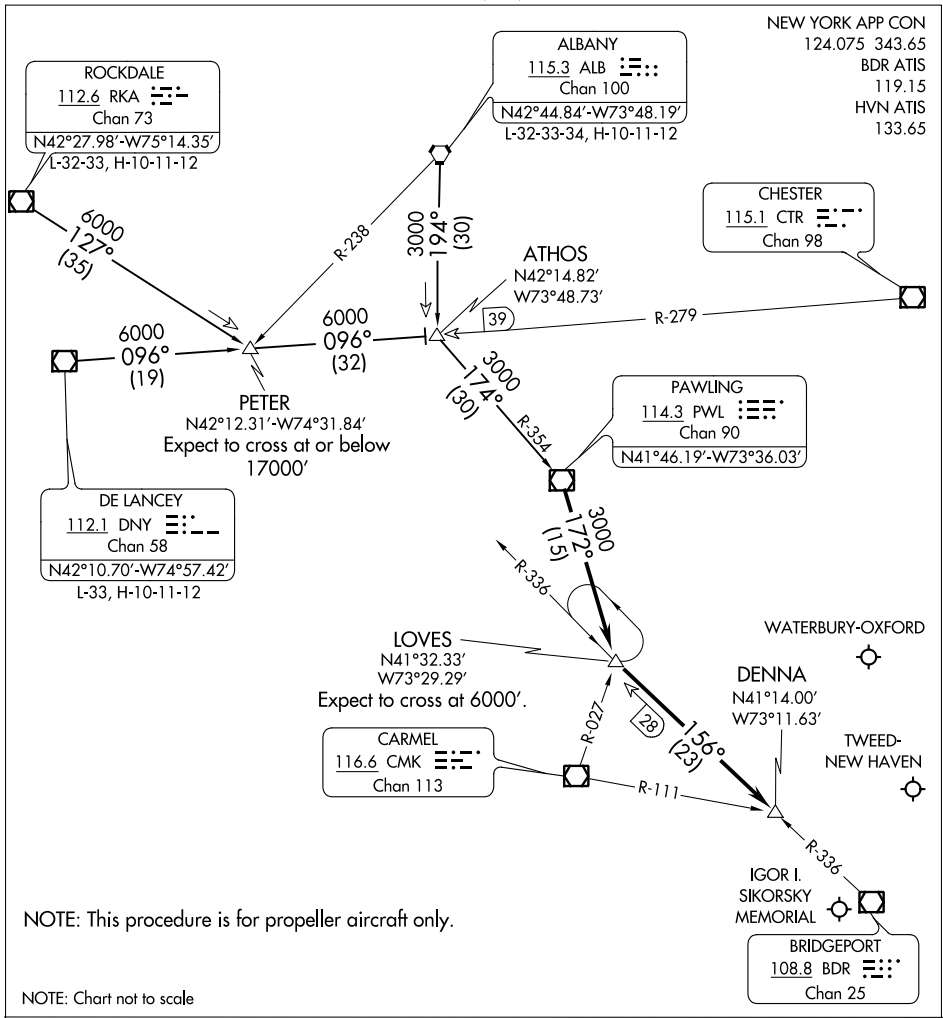


DENNA TWO ARRIVAL

AL-621 (FAA)

BRIDGEPORT, CONNECTICUT

NEW YORK APP CON
 124.075 343.65
 BDR ATIS
 119.15
 HVN ATIS
 133.65



NE-1, 08 OCT 2020 to 05 NOV 2020

NE-1, 08 OCT 2020 to 05 NOV 2020

NOTE: This procedure is for propeller aircraft only.

NOTE: Chart not to scale

ALBANY TRANSITION (ALB.DENNA2): From over ALB VORTAC via ALB R-194 to ATHOS INT, then via PWL R-354 to PWL VOR/DME. Thence....

DELANCEY TRANSITION (DNY.DENNA2): From over DNY VOR/DME via DNY R-096 to ATHOS INT, then via PWL R-354 to PWL VOR/DME. Thence....

ROCKDALE TRANSITION (RKA.DENNA2): From over RKA VOR/DME via RKA R-127 to PETER INT, then via DNY R-096 to ATHOS INT, then via PWL R-354 to PWL VOR/DME. Thence....

....From over PWL VOR/DME via PWL R-172 to LOVES INT. Then via BDR R-336 to DENNA INT. Expect radar vectors to final approach course.

DENNA TWO ARRIVAL

BRIDGEPORT, CONNECTICUT