


WAAS CH <b>45810</b> <b>W34A</b>	APP CRS <b>344°</b>	Rwy Idg TDZE <b>379</b> Apt Elev <b>433</b>
----------------------------------------	------------------------	---------------------------------------------------

# RNAV (GPS) Y RWY 34L

SEATTLE-TACOMA INTL (SEA)

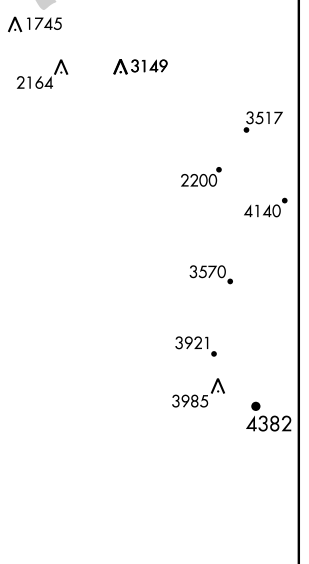
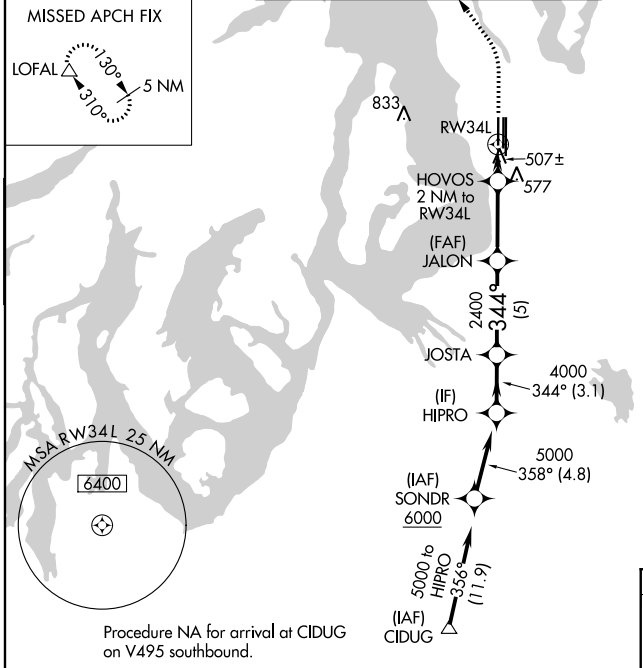
**▼** DME/DME RNP -0.3 NA. For uncompensated Baro-VNAV systems, LNAV/VNAV NA below -6°C (22°F) or above 54°C (130°F). Use of FD or AP providing RNAV track guidance required during simultaneous operations. LNAV procedure NA during simultaneous operations. Simultaneous approach authorized with Rwy 34R/C. For inoperative ALS, increase LNAV/VNAV all Cats visibility to 1 3/8 SM, increase LNAV Cat A and B visibility to RVR 5500 and Cat C and D visibility to 1 3/8 SM. #RVR 1800 authorized with use of FD or AP or HUD to DA.

MALSRL

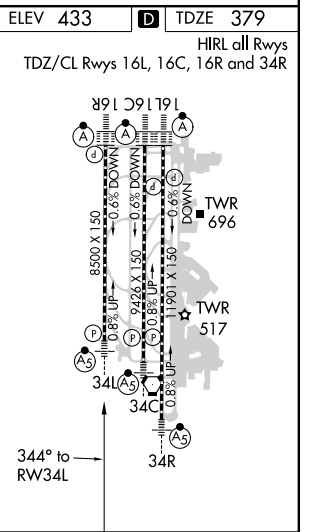


MISSED APPROACH: Climb to 900 then climbing left turn to 5000 direct LOFAL and hold.

D-ATIS <b>118.0</b>	SEATTLE APP CON <b>133.65 273.45</b>	SEATTLE TOWER <b>119.9 239.3</b> (Rwys 16L, 16C, 34C, 34R) <b>120.95 239.3</b> (Rwys 16R, 34L)	GND CON <b>121.7</b>	CLNC DEL <b>128.0</b>	CPDLC
------------------------	-----------------------------------------	------------------------------------------------------------------------------------------------------	-------------------------	--------------------------	-------



HIPRO	VGSI and RNAV glidepath not coincident (VGSI Angle 3.00/TCH 75).			900	5000	LOFAL
	JOSTA	JALON	HOVOS	*RNAV only		
5000	344°	4000	2400	*1.4 NM to RW34L	RW34L	
GP 3.00°	3.1 NM	5 NM	4.3 NM	0.6	1.4 NM	
TCH 55						
CATEGORY	A	B	C	D		
LPV DA#	579/24		200 (200-1/2)			
LNAV/VNAV DA	808/40		429 (400-3/4)			
LNAV MDA	860/24	481 (500-1/2)	860/55	481 (500-1)		
CIRCLING	1000-1	567 (600-1)	1000-1 1/2	1000-2		
			567 (600-1 1/2)	567 (600-2)		



NW-1, 08 OCT 2020 to 05 NOV 2020

NW-1, 08 OCT 2020 to 05 NOV 2020