


RNAV (RNP) Z RWY 34L

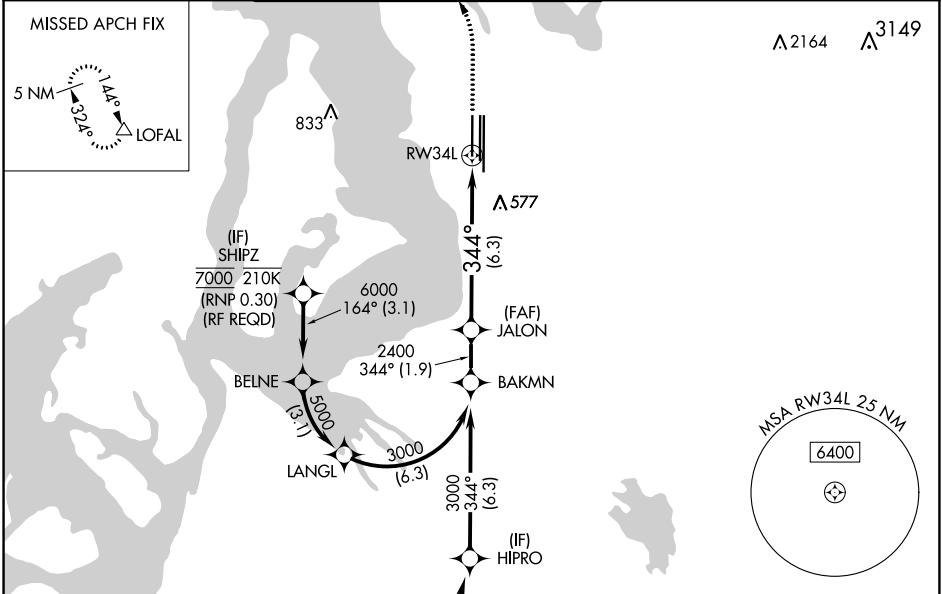
SEATTLE-TACOMA INTL (SEA)

APP CRS 344°	Rwy Idg 8500
	TDZE 379
	Apt Elev 433

▽ For uncompensated Baro-VNAV systems, procedure NA below -6°C (22°F) or above 54°C (130°F). Simultaneous approach authorized with Rwy 34R except for arrivals at SHIPZ. GPS required. Use of FD or AP providing RNAV track guidance required during simultaneous operations. For inop ALS, increase RNP 0.15 all Cats visibility to RVR 5000 and RNP 0.30 all Cats visibility to 1½ mile.

MALSR

MISSED APPROACH: Climb to 900 then climbing left turn to 5000 direct LOFAL and hold.

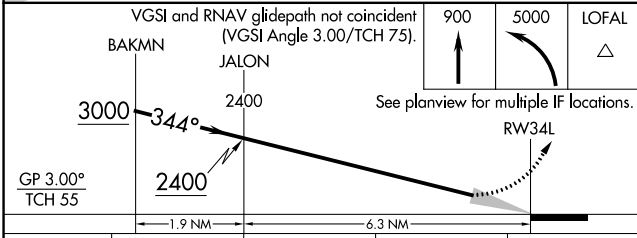
D-ATIS 118.0	SEATTLE APP CON 133.65 273.45	SEATTLE TOWER 119.9 239.3 (Rwys 16L, 16C, 34C, 34R) 120.95 239.3 (Rwys 16R, 34L)	GND CON 121.7	CLNC DEL 128.0	CPDLC
------------------------	---	--	-------------------------	--------------------------	-------



NW-1, 08 OCT 2020 to 05 NOV 2020

NW-1, 08 OCT 2020 to 05 NOV 2020

RADAR REQUIRED



CATEGORY	A	B	C	D
RNP 0.15 DA	695/24	316 (300-½)	695/40	316 (300-¾)
RNP 0.30 DA	787/50		408 (400-1)	

AUTHORIZATION REQUIRED

