

| | | |
|--|------------------------|--|
| LOC/DME I-SNQ 110.3 Chan 40 | APP CRS 164° | Rwy Idg 11901 TDZE 432 Apt Elev 432 |
|--|------------------------|--|

ILS or LOC RWY 16L

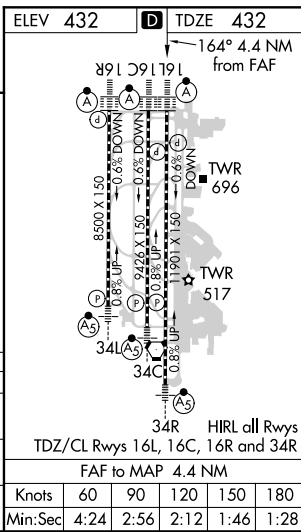
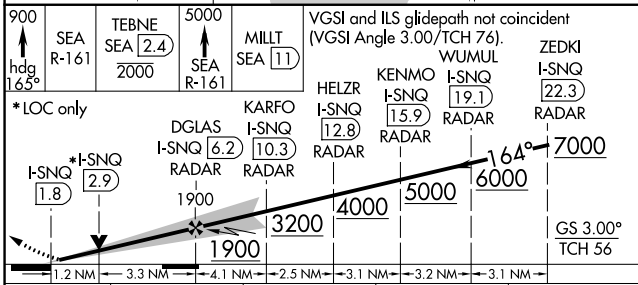
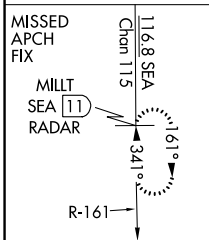
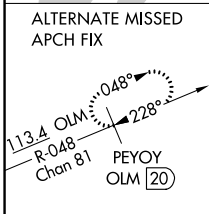
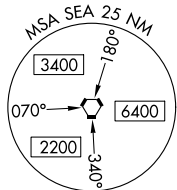
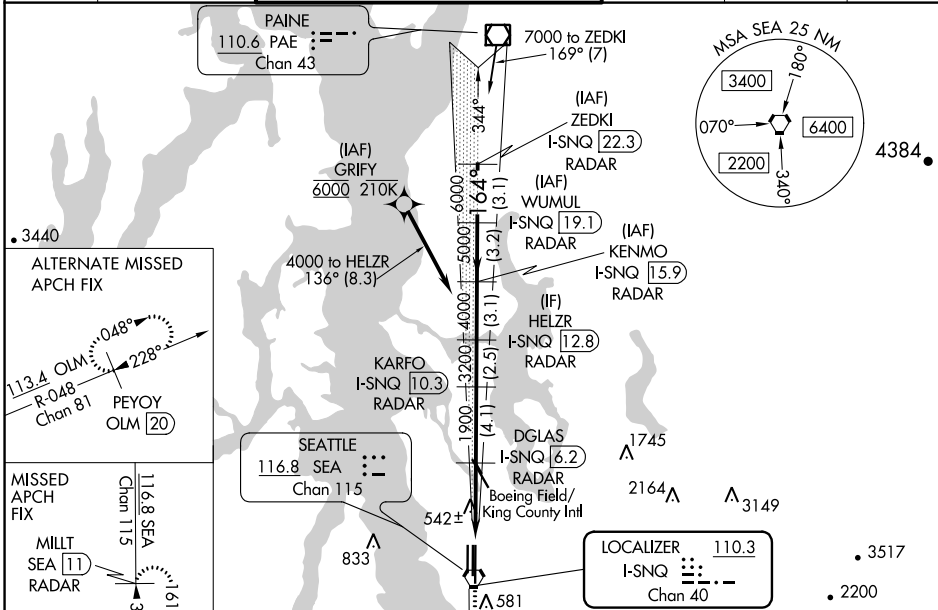
SEATTLE-TACOMA INTL (SEA)

DME or RADAR required. From GRIFY:RNAV 1-GPS required.

Simultaneous approach authorized with Rwy 16R.

MISSED APPROACH: Climb to 900 on heading 165° then on SEA VORTAC R-161 to cross TEBNE/SEA 2.4 DME/RADAR at or below 2000 then climb to 5000 on SEA VORTAC R-161 to MILLT/SEA 11 DME/RADAR and hold, continue climb-in-hold to 5000.

| | | | | | |
|------------------------|---|--|-------------------------|--------------------------|-------|
| D-ATIS 118.0 | SEATTLE APP CON 133.65 273.45 | SEATTLE TOWER 119.9 239.3 (Rwys 16L, 16C, 34C, 34R) 120.95 239.3 (Rwys 16R, 34L) | GND CON 121.7 | CLNC DEL 128.0 | CPDLC |
|------------------------|---|--|-------------------------|--------------------------|-------|



| CATEGORY | A | B | C | D |
|-----------|-------------------------|----------------------------|--------------------|---|
| S-ILS 16L | 697/20 265 (300-1/2) | 632/18 200 (200-1/2) | | |
| S-LOC 16L | 880/24 448 (500-1/2) | 880/45 448 (500-7/8) | | |
| CIRCLING | 1000-1 568 (600-1) | 1000-1 1/2 568 (600-1 1/2) | 1000-2 568 (600-2) | |

NW-1, 08 OCT 2020 to 05 NOV 2020

NW-1, 08 OCT 2020 to 05 NOV 2020