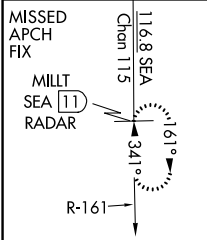
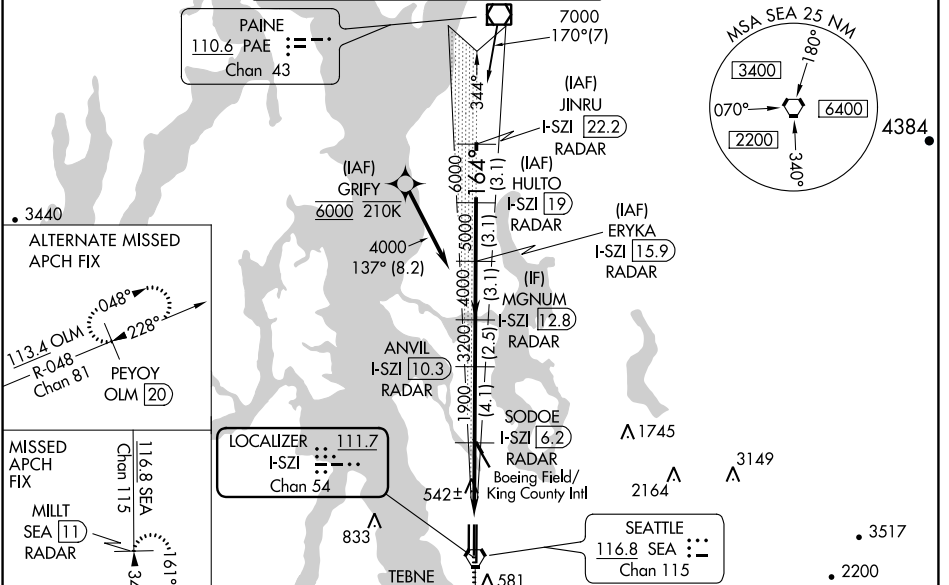


LOC/DME I-SZI 111.7 Chan 54	APP CRS 164°	Rwy Idg TDZE 430 Apt Elev 432 432	16C 9426 11901	16L 430 432
--	------------------------	---	--------------------------	-----------------------

ILS or LOC RWY 16C

SEATTLE-TACOMA INTL (SEA)

<p>DME or RADAR required. From GRIFY:RNAV 1-GPS required.</p> <p>▼ Inop table does not apply to Sidstep 16L Cats A/B. Simultaneous approach authorized with Rwy 16R. Simultaneous operations require use of vertical guidance, maintain last assigned altitude until established on glide slope. For inop ALS, increase S-LOC 16C Cat C, D visibility to RVR 5500. See additional requirements on adjacent information page.</p>		<p>ALSF-2 Rwy 16C/L</p> <p>(A)</p>	<p>MISSED APPROACH: Climb on heading 160° and SEA VORTAC R-161 to cross TEBNE/SEA 2.4 DME/RADAR at or below 2000, then climb to 5000 on SEA VORTAC R-161 to MILLT/SEA 11 DME/RADAR and hold, continue climb-in-hold to 5000.</p>		
D-ATIS 118.0	SEATTLE APP CON 133.65 273.45	SEATTLE TOWER 119.9 239.3 (Rwys 16L, 16C, 34C, 34R) 120.95 239.3 (Rwys 16R, 34L)	GND CON 121.7	CLNC DEL 128.0	CPDLC



<p>SEA R-161 hdg 160°</p> <p>TEBNE SEA 2.4</p> <p>5000 SEA R-161</p> <p>MILLT SEA 11</p> <p>*LOC only</p> <p>I-SZI 1.7</p> <p>I-SZI 2.7</p> <p>SODOE I-SZI 6.2</p> <p>ANVIL I-SZI 10.3</p> <p>I-SZI 12.8</p> <p>I-SZI 15.9</p> <p>I-SZI 19</p> <p>I-SZI 22.2</p> <p>GS 3.00°</p> <p>TCH 55</p>	<p>VGSI and ILS glidepath not coincident (VGSI Angle 3.00/TCH 71).</p>			
	<p>SEATTLE TOWER 119.9 239.3 (Rwys 16L, 16C, 34C, 34R) 120.95 239.3 (Rwys 16R, 34L)</p>			
	<p>SEATTLE TOWER 119.9 239.3 (Rwys 16L, 16C, 34C, 34R) 120.95 239.3 (Rwys 16R, 34L)</p>			
CATEGORY	A	B	C	D
S-LS 16C	630/18 200 (200-½)			
S-LOC 16C	800/24	370 (400-½)	800/35	370 (400-¾)
SIDESTEP 16L	800/55 368 (400-1)		800-1½ 368 (400-1½)	
CIRCLING	1000-1 568 (600-1)		1000-2 568 (600-2)	

ELEV 432	TDZE 16C 430	TDZE 16L 432
<p>164° 4.4 NM from FAF</p>		
<p>8500 X 1.50</p> <p>9226 X 1.50</p> <p>9500 X 1.50</p> <p>9900 X 1.50</p> <p>10000 X 1.50</p> <p>10500 X 1.50</p> <p>11000 X 1.50</p> <p>11500 X 1.50</p> <p>12000 X 1.50</p>		
<p>TDZ/CL Rwys 16L, 16C, 16R and 34R</p> <p>HIRL all Rwys</p> <p>FAF to MAP 4.4 NM</p>		
<p>Knots 60 90 120 150 180</p> <p>Min:Sec 4:24 2:56 2:12 1:46 1:28</p>		

NW-1, 08 OCT 2020 to 05 NOV 2020

NW-1, 08 OCT 2020 to 05 NOV 2020