

| | | | |
|---|------------------------|-----------------------------|--|
| LOC/DME I-SEA 110.3 Chan 40 | APP CRS 344° | Rwy Idg TDZE Apt Elev | 11901 372 432 |
|---|------------------------|-----------------------------|--|

ILS RWY 34R (SA CAT I & II)

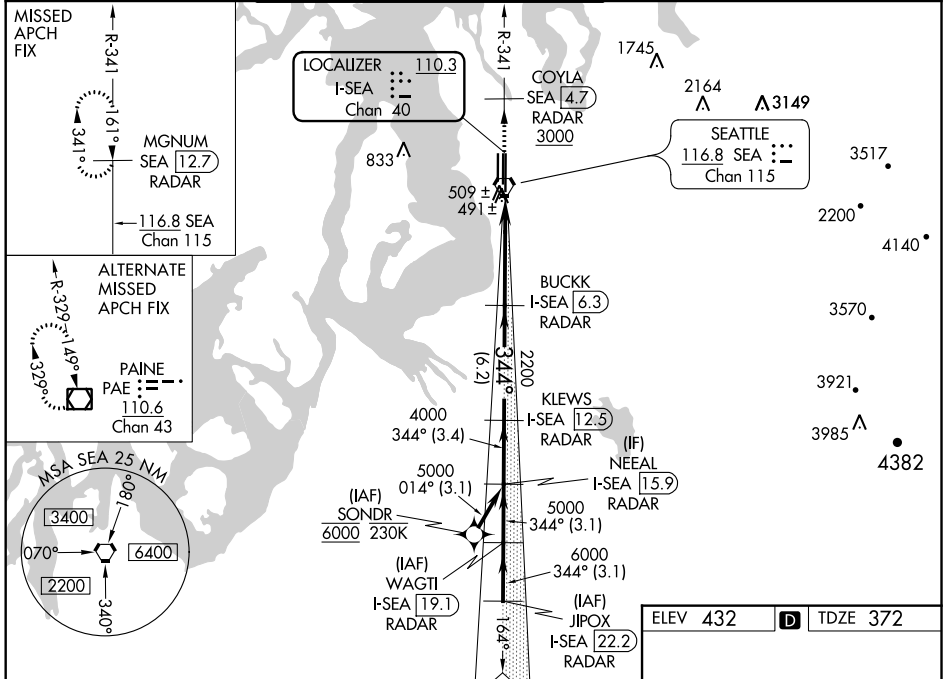
SEATTLE-TACOMA INTL (SEA)

From SONDR: RNAV 1-GPS required. DME or RADAR required.

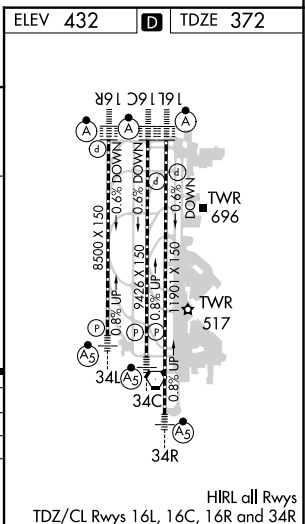
MALS MISSED APPROACH: Climb on heading 343° and outbound on SEA VORTAC R-341 to cross COYLA/SEA 4.7 DME/RADAR at or above 3000 then climb to 5000 on SEA VORTAC R-341 to MGNUM/SEA 12.7 DME/RADAR and hold, continue climb-in-hold to 5000.

Simultaneous approach authorized with Rwy 34L. SA CAT I: Requires specific OPSPEC, MSPEC, or LOA approval and use of HUD to DH. SA CAT II: Reduced lighting: Requires specific OPSPEC, MSPEC, or LOA approval and use of autoland or HUD to touchdown.

| | | | | | |
|------------------------|---|---|-------------------------|--------------------------|-------|
| D-ATIS 118.0 | SEATTLE APP CON 133.65 273.45 | SEATTLE TOWER. 119.9 239.3 (Rwys 16L, 16C, 34C, 34R) 120.95 239.3 (Rwys 16R, 34L) | GND CON 121.7 | CLNC DEL 128.0 | CPDLC |
|------------------------|---|---|-------------------------|--------------------------|-------|



| | | | | | | |
|---|------------------------|-----------------------|------------------------|--------------------------|---|----------------|
| VGSI and ILS glidepath not coincident (VGSI Angle 2.75/TCH 81). | | | | COYLA SEA 4.7 RADAR 3000 | 5000 SEA R-341 | MGNUM SEA 12.7 |
| JIPOX I-SEA 22.2 RADAR | WAGTI I-SEA 19.1 RADAR | NEAL I-SEA 15.9 RADAR | KLEWS I-SEA 12.5 RADAR | BUCKK I-SEA 6.3 RADAR | Use I-SEA DME when on localizer course. | |
| 7000 ← 344° | | 6000 | | 5000 | | 4000 |
| GS 2.75° TCH 60 | | 2200 | | 2200 | | 2200 |
| 3.1 NM | | 3.1 NM | | 3.4 NM | | 6.2 NM |
| | | | | 6.1 NM | | 1.135° |



| CATEGORY | A | B | C | D |
|-----------|-----------|-----------|-----|--------|
| S-ILS 34R | SA CAT I | RA 250/14 | 150 | DA 522 |
| S-ILS 34R | SA CAT II | RA 200/12 | 100 | DA 472 |

SA CATEGORY I & II ILS - SPECIAL AIRCREW & AIRCRAFT CERTIFICATION REQUIRED

SEATTLE, WASHINGTON
Amdt 3 28FEB19

47°27'N-122°19'W

SEATTLE-TACOMA INTL (SEA)
ILS RWY 34R (SA CAT I & II)

HIRL all Rwys
TDZ/CL Rwys 16L, 16C, 16R and 34R

NW-1, 08 OCT 2020 to 05 NOV 2020

NW-1, 08 OCT 2020 to 05 NOV 2020