

LOC/DME I-CJL <b>110.75</b> Chan 44 (Y)	APP CRS <b>164°</b>	Rwy Idg TDZE Apt Elev	<b>8500</b> <b>415</b> <b>432</b>
---	------------------------	-----------------------------	---

# ILS RWY 16R (CAT II & III)

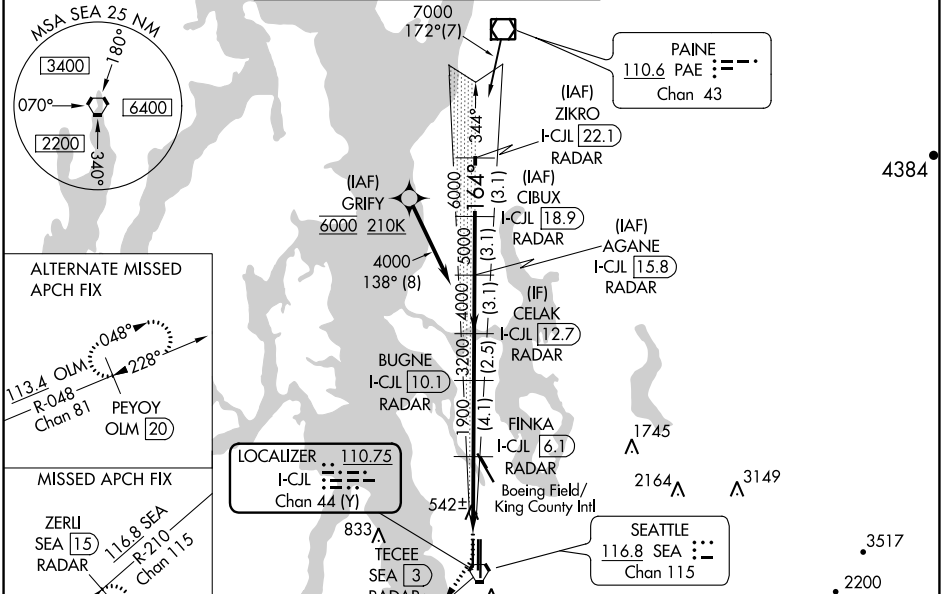
SEATTLE-TACOMA INTL (SEA)

DME or RADAR required. From GRIFY:RNAV 1-GPS required.

Simultaneous approach authorized with Rwy 16L and 16C. Simultaneous operations require use of vertical guidance, maintain last assigned altitude until established on glideslope. Cat II: RVR 1000 authorized with specific OPSPEC, MSPEC or LOA approval and use of Autoland or HUD to touchdown.

ALSF-2  
MISSED APPROACH: Climb to 900 then climb on heading 195° and on SEA VORTAC R-210 to cross TECEE/SEA 3 DME/RADAR at or below 2000 then climb to 5000 on SEA VORTAC R-210 to ZERLI/SEA 15 DME/RADAR and hold, continue climb-in-hold to 5000.

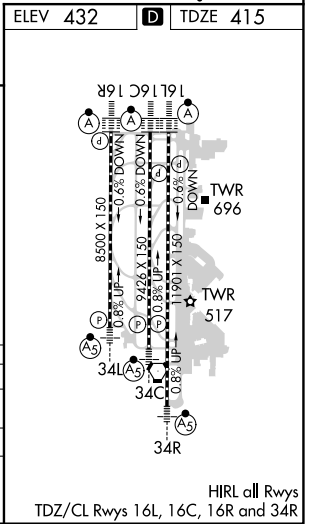
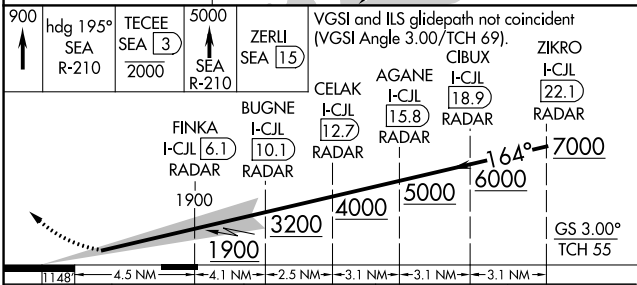
D-ATIS <b>118.0</b>	SEATTLE APP CON <b>133.65 273.45</b>	SEATTLE TOWER <b>119.9 239.3</b> (Rwys 16L, 16C, 34C, 34R) <b>120.95 239.3</b> (Rwys 16R, 34L)	GND CON <b>121.7</b>	CLNC DEL <b>128.0</b>	CPDLC
------------------------	---	--	-------------------------	--------------------------	-------



ALTERNATE MISSED APCH FIX  
113.4 OLM, R-048, Chan 81, PEYOY OLM (20)

MISSED APCH FIX  
ZERLI SEA (15), R-210, Chan 115

ELEV 432	TDZE 415
----------	----------



CATEGORY	A	B	C	D
S-ILS 16R	CAT II RA 139/12 100 DA 515			
S-ILS 16R	CAT III RVR 03			

## CATEGORY II & III ILS - SPECIAL AIRCREW & AIRCRAFT CERTIFICATION REQUIRED

NW-1, 08 OCT 2020 to 05 NOV 2020

NW-1, 08 OCT 2020 to 05 NOV 2020