

LOC/DME I-SZI 111.7 Chan 54	APP CRS 164°	Rwy Idg 9426 TDZE 430 Apt Elev 432
---	------------------------	---

ILS RWY 16C (SA CAT I)

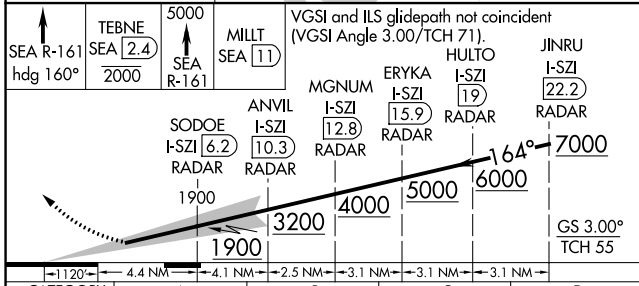
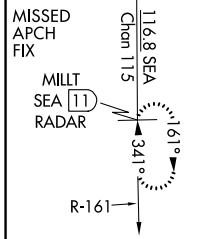
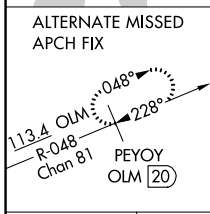
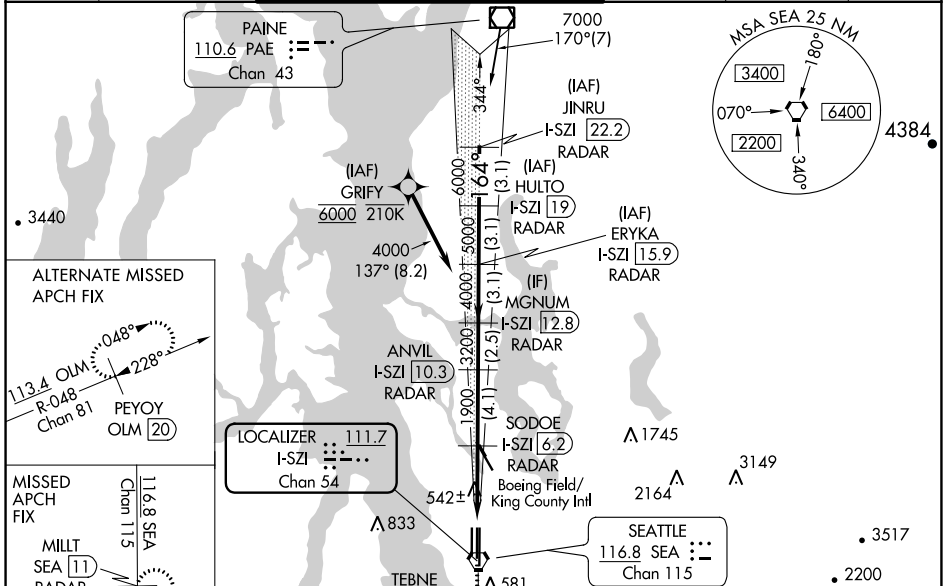
SEATTLE-TACOMA INTL (SEA)

DME or RADAR required. From GRIFY:RNAV 1-GPS required.

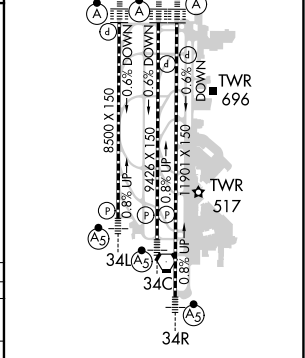
Simultaneous approach authorized with Rwy 16R. Simultaneous operations require use of vertical guidance, maintain last assigned altitude until established on glideslope. Requires specific OPSPEC, MSPEC or LOA approval and use of HUD to DH.

ALSF-2

D-ATIS 118.0	SEATTLE APP CON 133.65 273.45	SEATTLE TOWER 119.9 239.3 (Rwys 16L, 16C, 34C, 34R) 120.95 239.3 (Rwys 16R, 34L)	GND CON 121.7	CLNC DEL 128.0	CPDLC
------------------------	---	--	-------------------------	--------------------------	-------



ELEV 432	D TDZE 432
----------	-------------------



CATEGORY	A	B	C	D
S-ILS 16C	RA 292/14 150 DA 580			

SA CATEGORY I ILS - SPECIAL AIRCREW & AIRCRAFT CERTIFICATION REQUIRED

NW-1, 08 OCT 2020 to 05 NOV 2020

NW-1, 08 OCT 2020 to 05 NOV 2020