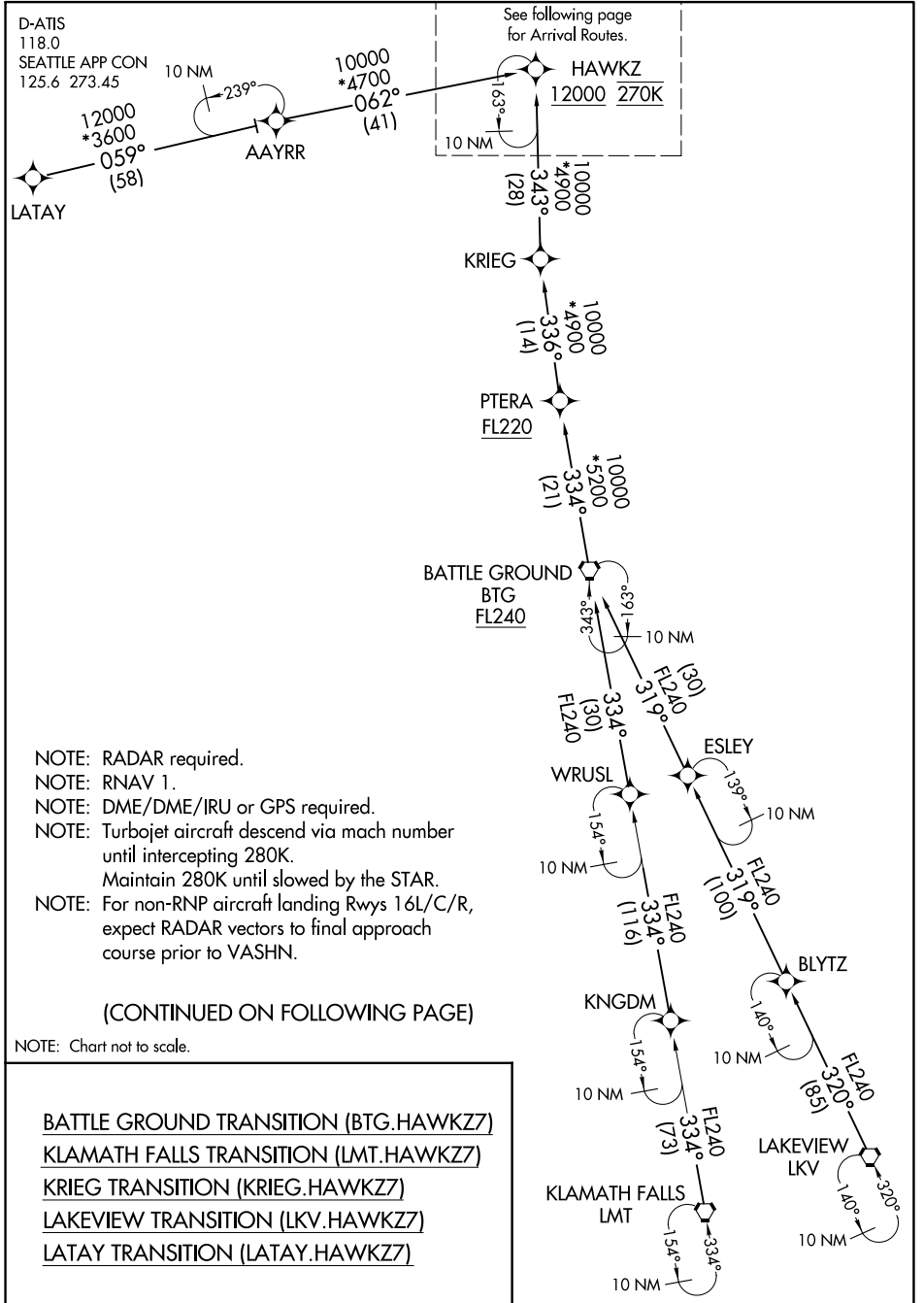


HAWKZ SEVEN ARRIVAL (RNAV) Transition Routes



D-ATIS
118.0
SEATTLE APP CON
125.6 273.45

LATAY
12000
*3600
059°
(58)

- NOTE: RADAR required.
- NOTE: RNAV 1.
- NOTE: DME/DME/IRU or GPS required.
- NOTE: Turbojet aircraft descend via mach number until intercepting 280K. Maintain 280K until slowed by the STAR.
- NOTE: For non-RNP aircraft landing Rwy 16L/C/R, expect RADAR vectors to final approach course prior to VASHN.

(CONTINUED ON FOLLOWING PAGE)

NOTE: Chart not to scale.

- BATTLE GROUND TRANSITION (BTG.HAWKZ7)
- KLAMATH FALLS TRANSITION (LMT.HAWKZ7)
- KRIEG TRANSITION (KRIEG.HAWKZ7)
- LAKEVIEW TRANSITION (LKV.HAWKZ7)
- LATAY TRANSITION (LATAY.HAWKZ7)

NW-1, 08 OCT 2020 to 05 NOV 2020

NW-1, 08 OCT 2020 to 05 NOV 2020