

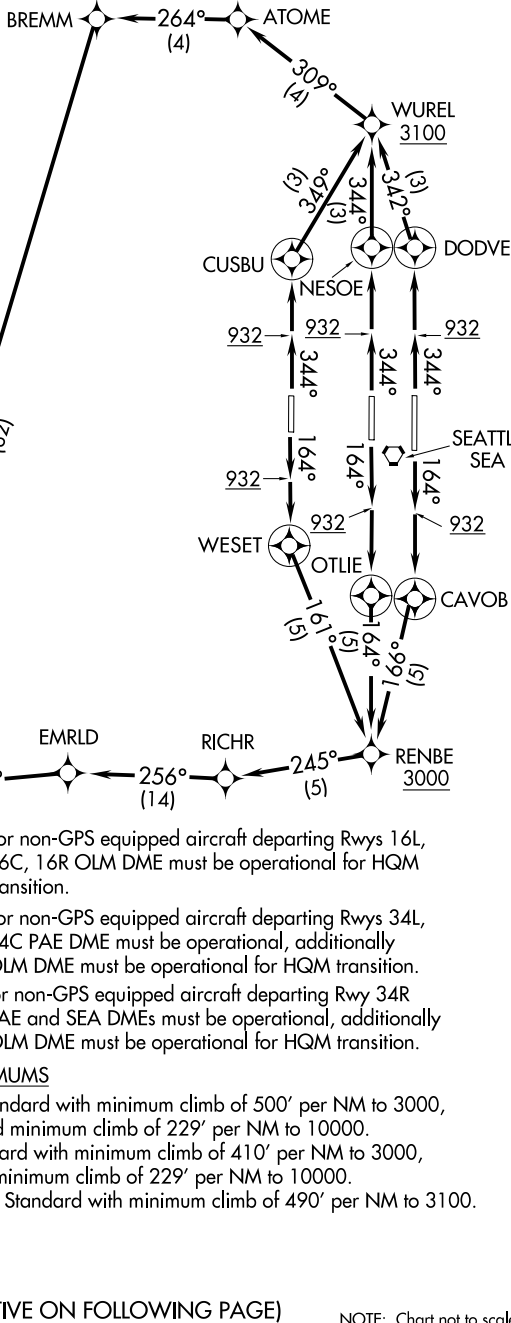
HAROB SIX DEPARTURE (RNAV)

AL-582 (FAA)

D-ATIS
118.0
CLNC DEL
128.0
CPDLC
SEATTLE DEP CON
120.4 395.0

**TOP ALTITUDE:
ASSIGNED BY ATC**

- NOTE: RNAV 1.
- NOTE: RADAR required.
- NOTE: DME/DME/IRU or GPS required.



NOTE: For non-GPS equipped aircraft departing Rwy 16L, 16C, 16R OLM DME must be operational for HQM transition.

NOTE: For non-GPS equipped aircraft departing Rwy 34L, 34C PAE DME must be operational, additionally OLM DME must be operational for HQM transition.

NOTE: For non-GPS equipped aircraft departing Rwy 34R PAE and SEA DMEs must be operational, additionally OLM DME must be operational for HQM transition.

TAKEOFF MINIMUMS

Rwy 16L/R: Standard with minimum climb of 500' per NM to 3000, and minimum climb of 229' per NM to 10000.

Rwy 16C: Standard with minimum climb of 410' per NM to 3000, and minimum climb of 229' per NM to 10000.

Rwys 34L/C/R: Standard with minimum climb of 490' per NM to 3100.

(NARRATIVE ON FOLLOWING PAGE)

NOTE: Chart not to scale.

NW-1, 08 OCT 2020 to 05 NOV 2020

NW-1, 08 OCT 2020 to 05 NOV 2020

HAROB SIX DEPARTURE (RNAV)