

RNAV (RNP) Z RWY 17R

AUSTIN-BERGSTROM INTL (AUS)

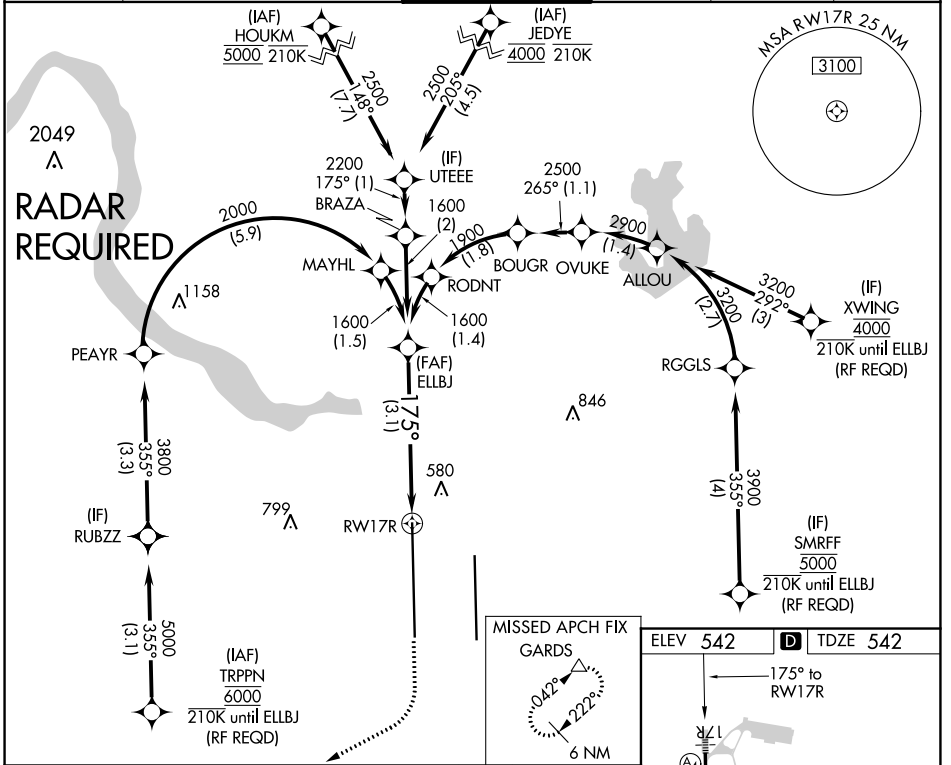
APP CRS	Rwy Idg	12250
175°	TDZE	542
	Apt Elev	542

For uncompensated Baro-VNAV systems, procedure NA below -6°C (22°F) or above 54°C (130°F). Simultaneous approach authorized. GPS required.

MAIS

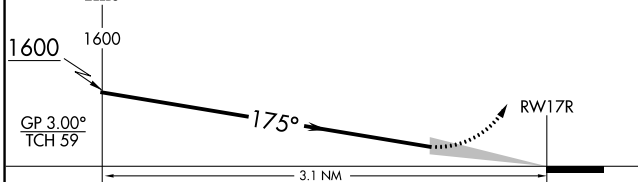

MISSED APPROACH: Climb to 1000 then climbing right turn to 3500 direct GARDS and hold.

D-ATIS	AUSTIN APP CON	AUSTIN TOWER	GND CON	CLNC DEL	CPDLC
124.4	127.225 317.65 (EAST) 120.875 270.25 (SOUTH) 119.0 370.85 (WEST)	121.0 281.5	121.9 348.6	125.5 263.0	



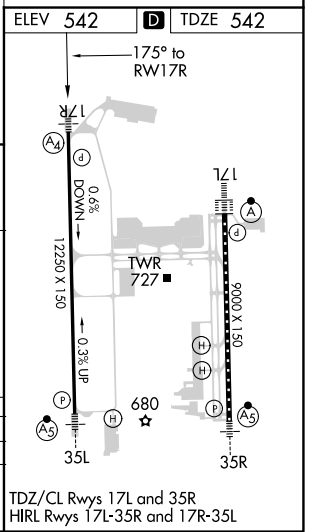
See planview for multiple IF locations.

1000	3500	GARDS



CATEGORY	A	B	C	D
RNP 0.30 DA		861/40	319 (400-¾)	

AUTHORIZATION REQUIRED



TDZ/CL Rwsy 17L and 35R
 HIRL Rwsy 17L-35R and 17R-35L

S-C-3, 08 OCT 2020 to 05 NOV 2020

S-C-3, 08 OCT 2020 to 05 NOV 2020