

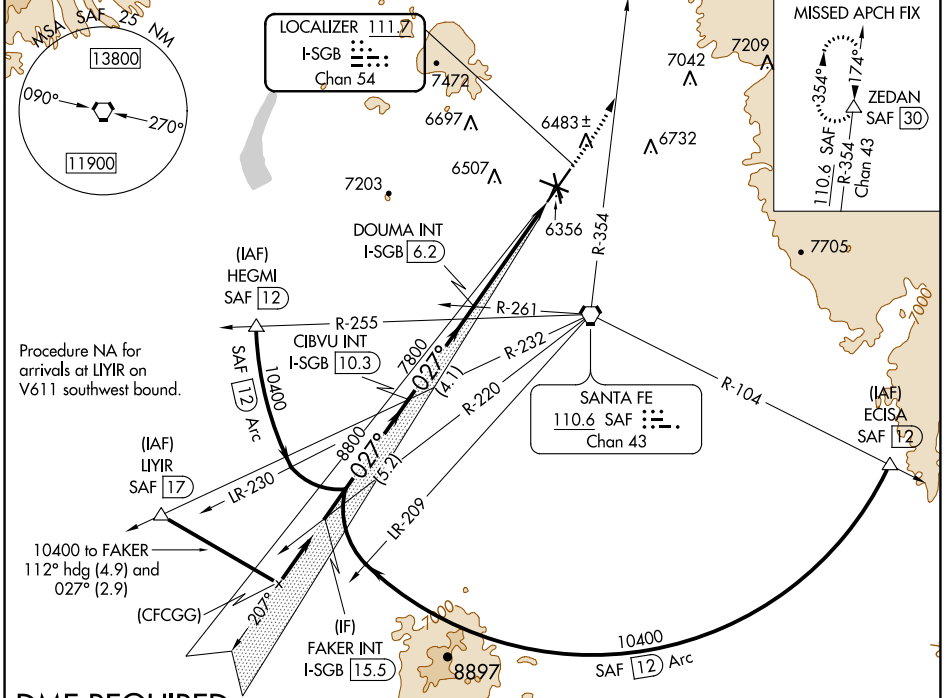
LOC/DME I-SGB <b>111.7</b> Chan 54	APP CRS <b>027°</b>	Rwy Idg TDZE Apt Elev	<b>8366</b> <b>6303</b> <b>6349</b>
--	------------------------	-----------------------------	---

# ILS or LOC RWY 2

SANTA FE MUNI (SAF)

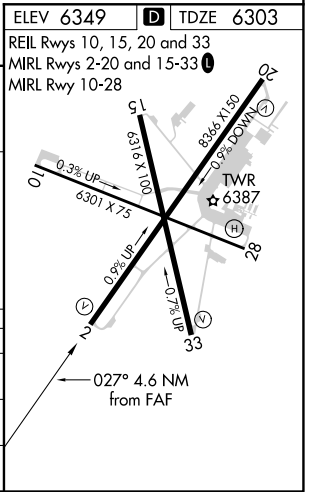
**DME required.** MISSED APPROACH: Climb to 7300 then climbing left turn to 11000 on SAF VORTAC R-354 to ZEDAN/SAF 30 DME and hold.

ATIS <b>128.55</b>	ALBUQUERQUE CENTER <b>132.8 346.35</b>	SANTA FE TOWER ★ <b>119.5 (CTAF) 0 239.3</b>	GND CON <b>121.7</b>	UNICOM <b>122.95</b>
-----------------------	---	---	-------------------------	-------------------------



**DME REQUIRED**

FAKER INT I-SGB 15.5	VGSI and ILS glidepath not coincident [VGSI Angle 3.00/TCH 69]		7300	11000	ZEDAN
	CIBVU INT I-SGB 10.3	DOUMA INT I-SGB 6.2	↑	SAF R-354	△
10400	8800	7800	* I-SGB 2.8 I-SGB 1.6		
GS 3.00° TCH 53	5.2 NM	4.1 NM	3.4 NM	1.2	* LOC only
CATEGORY	A	B	C	D	
S-ILS 2	6503-¾ 200 (200-¾)				
S-LOC 2	6740-1	437 (400-1)	6740-1¼	437 (400-1¼)	
CIRCLING	6800-1	6920-1	7340-3	7660-3	
	451 (500-1)	571 (600-1)	991 (1000-3)	1311 (1400-3)	



SW-1, 08 OCT 2020 to 05 NOV 2020

SW-1, 08 OCT 2020 to 05 NOV 2020