

HI-TACAN RWY 32

TACAN BKF Chan 33	APCH CRS 328°	Rwy ldg 11,006 TDZE 5663 Arprt Elev 5663
-----------------------------	-------------------------	---

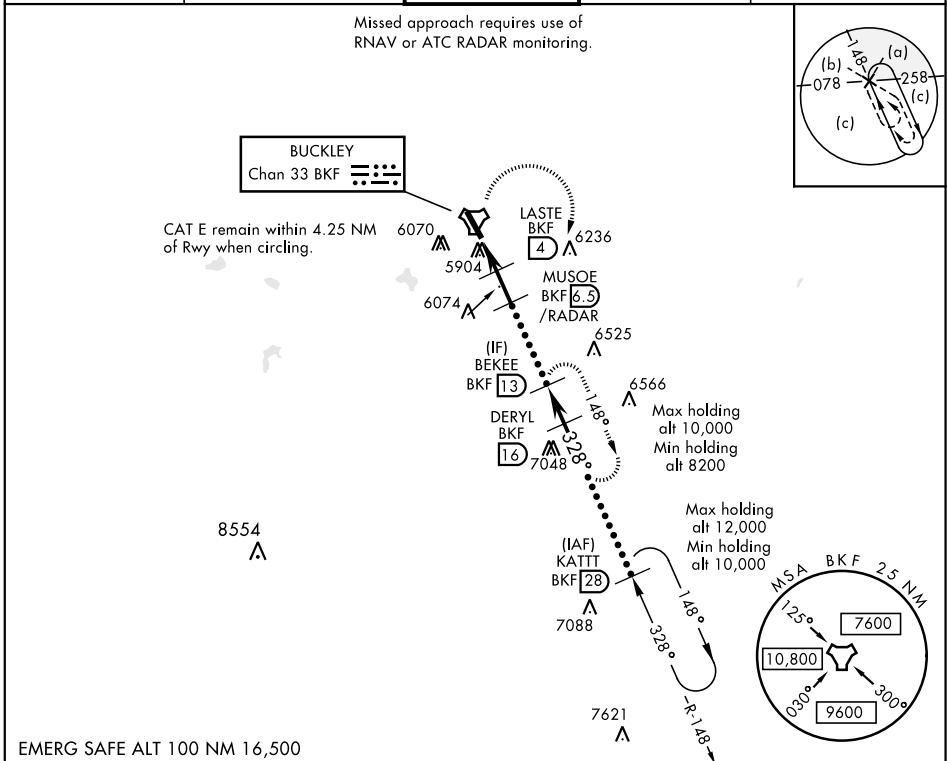
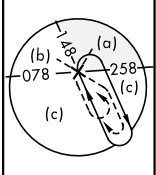
JAL-538 [USAF]

BUCKLEY AFB (KBKF)

▼ * When ALS inop, increase CAT CDE vis to 1¾ miles. ** Circling NA East of Rwy 14-32.	ALSF-1 	MISSED APPROACH: Climbing right turn to 8200 and intercept BKF TACAN R-148 direct BEKEE and hold or as directed by ATC.

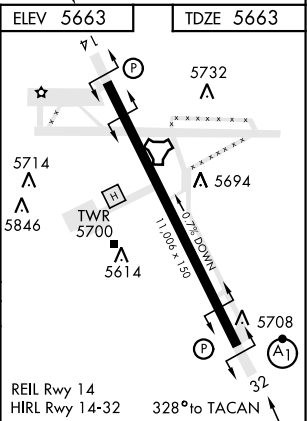
ATIS * 119.675 259.3	DENVER APP CON 128.45 251.075	BUCKLEY TOWER * 121.0 291.675	GND CON 121.6 275.8	CLNC DEL 121.6 275.8
--------------------------------	---	---	-------------------------------	--------------------------------

Missed approach requires use of RNAV or ATC RADAR monitoring.



EMERG SAFE ALT 100 NM 16,500

8200 BKF R-148	BEKEE BKF (13)			
TACAN	CENAR (1.7)	LASTE (4)	MUSOE (6.5)/RADAR	BEKEE (13)
		DERYL (16)	KATT (28)	
		8100	10,000	
		7400	8000	
		6600		
		5. NM	2.3 NM	2.5 NM
CATEGORY	C	D	E	
S-32 *	6280-1¾		617 (700-1¾)	
CIRCLING **	6360-2 697 (700-2)	6400-2¼ 737 (800-2¼)	6420-2¾ 757 (800-2¾)	



HI-TACAN RWY 32

SW-1, 08 OCT 2020 to 05 NOV 2020

SW-1, 08 OCT 2020 to 05 NOV 2020